

ONYX

TECHNOLOGY POWERING A CLEANER FUTURE



Order Today from
www.johnson-wholesale.com



RX20
RIDE-ON FLOOR SCRUBBER

ILLUSTRATED PARTS LIST

TABLE OF CONTENTS

Brush and cleaning pad set	3
Recovery Tank Group	5
Solution Tank Group	7
Head Group	9
Control Panel Group	11
Battery Group	12
Base Group	13
Drain Group	14
Front Wheel Group	15
Rear Wheel Group	17
Brush Lifting Group	18
Brush Assembly Group	19
Squeegee Lifting Group	21
Squeegee Group	23
Wiring Diagram	25
Notes	26

How to order spare parts:

Parts and supplies may be ordered by phone, by fax or by email.

- A. Identify the machine model
- B. Identify the machine serial number
- C. Provide the part number and quantity

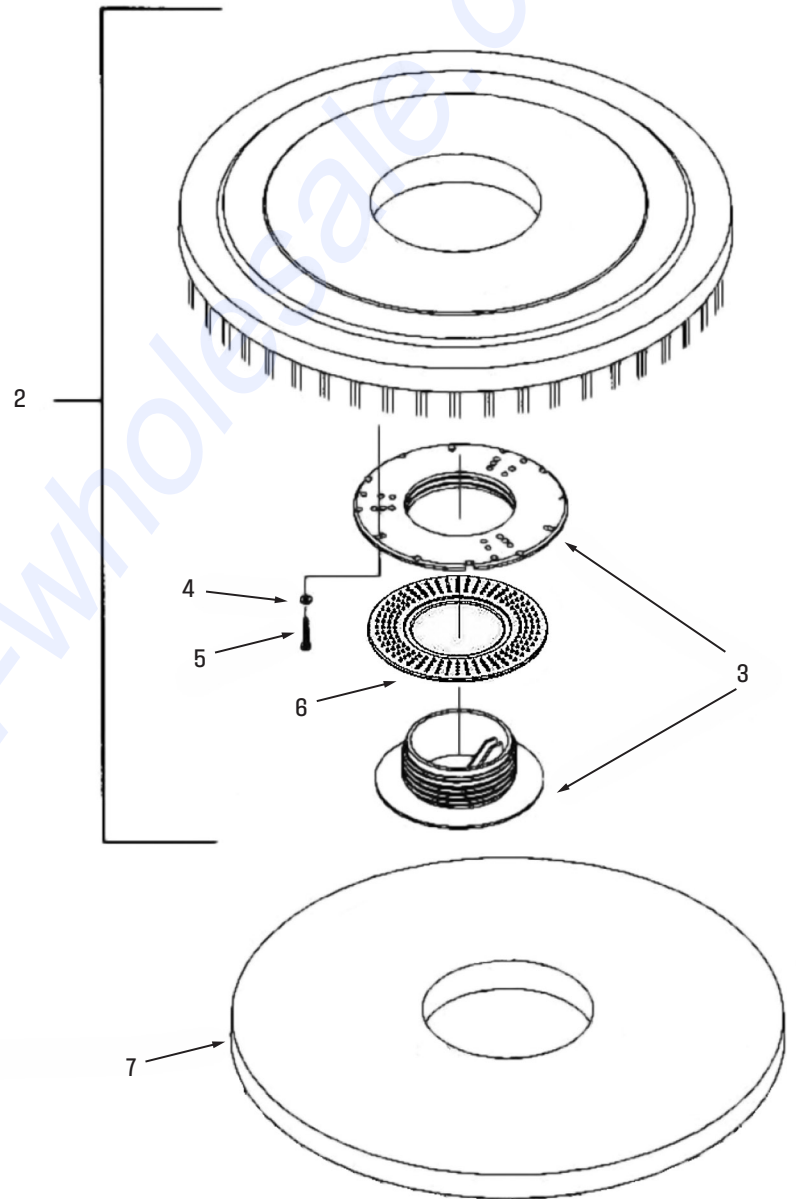
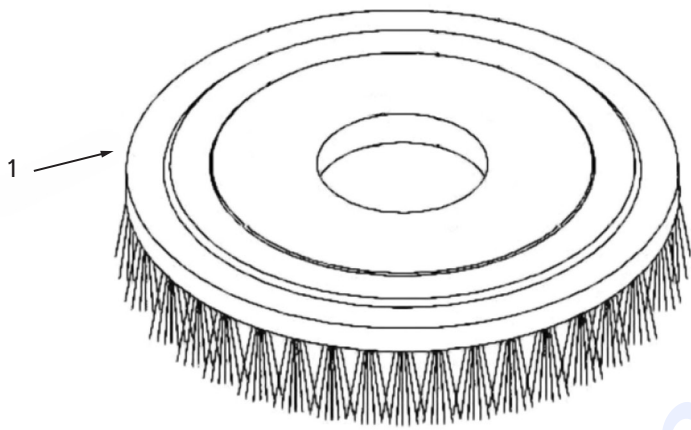
Provide your detail logistic information

Provide your name, company name, shipping address, phone number and purchase order number.



12605 Commerce Station Dr • Suite 700
Huntersville, NC 28078
704.827.9368

BRUSH AND CLEANING PAD SET

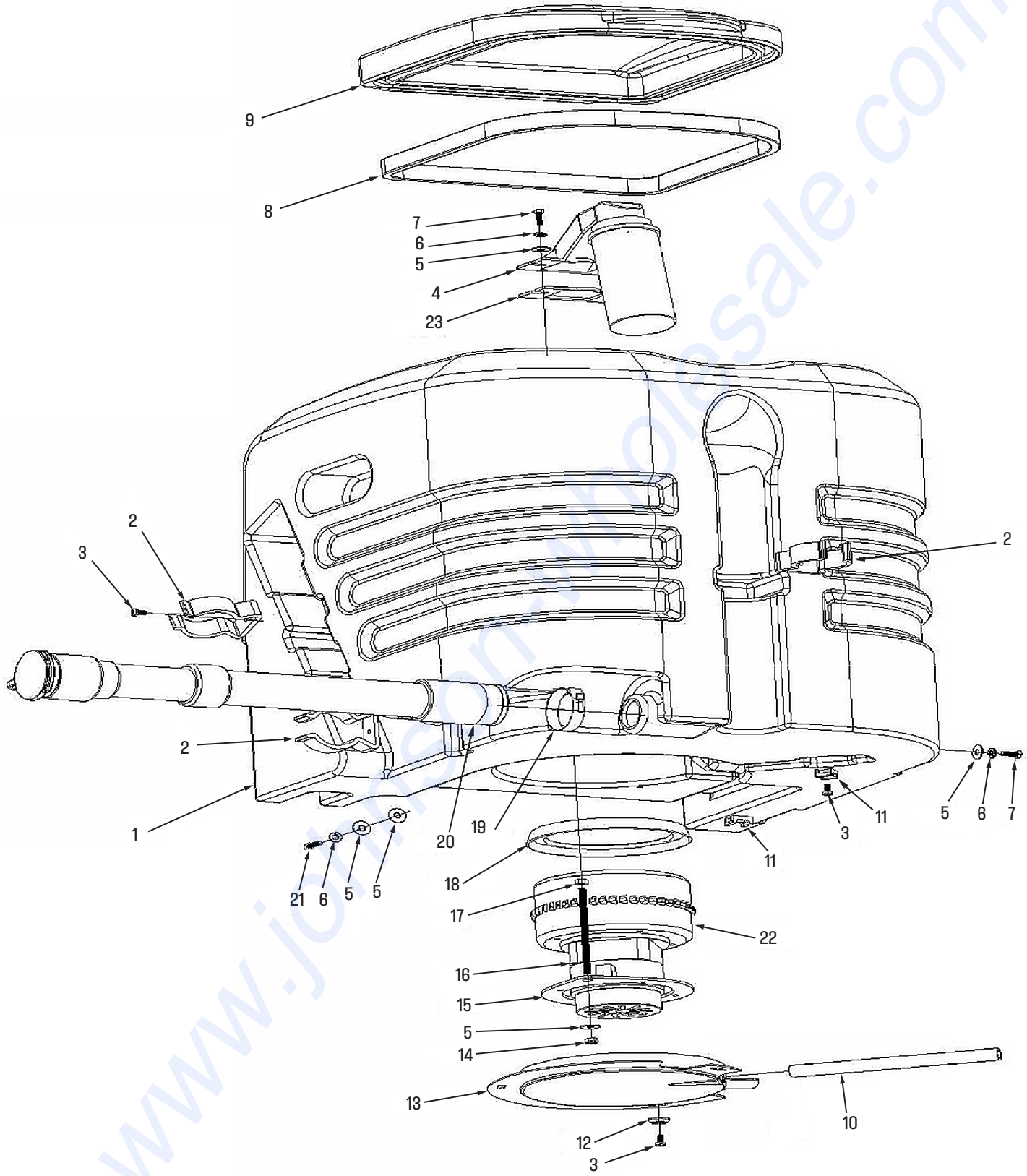


BRUSH AND CLEANING PAD SET

No	Part No.	Description	Qty
1	W10846	Brush 50cm/20inch-1	1
2	W10847	Pad drive assy-1	1
3	W10848	Device, centering-1	1
4	For Reference	Washer D4D9	3
5	For Reference	Screw M4X15	3
6	W12166	Washer, centering-1	1
7	W11017	Pad, polishing, white-1	1
7	W11018	Pad, scrubbing, red-1	1
7	W11019	Pad, stripping, black-1	1

www.johnson-wholesale.com

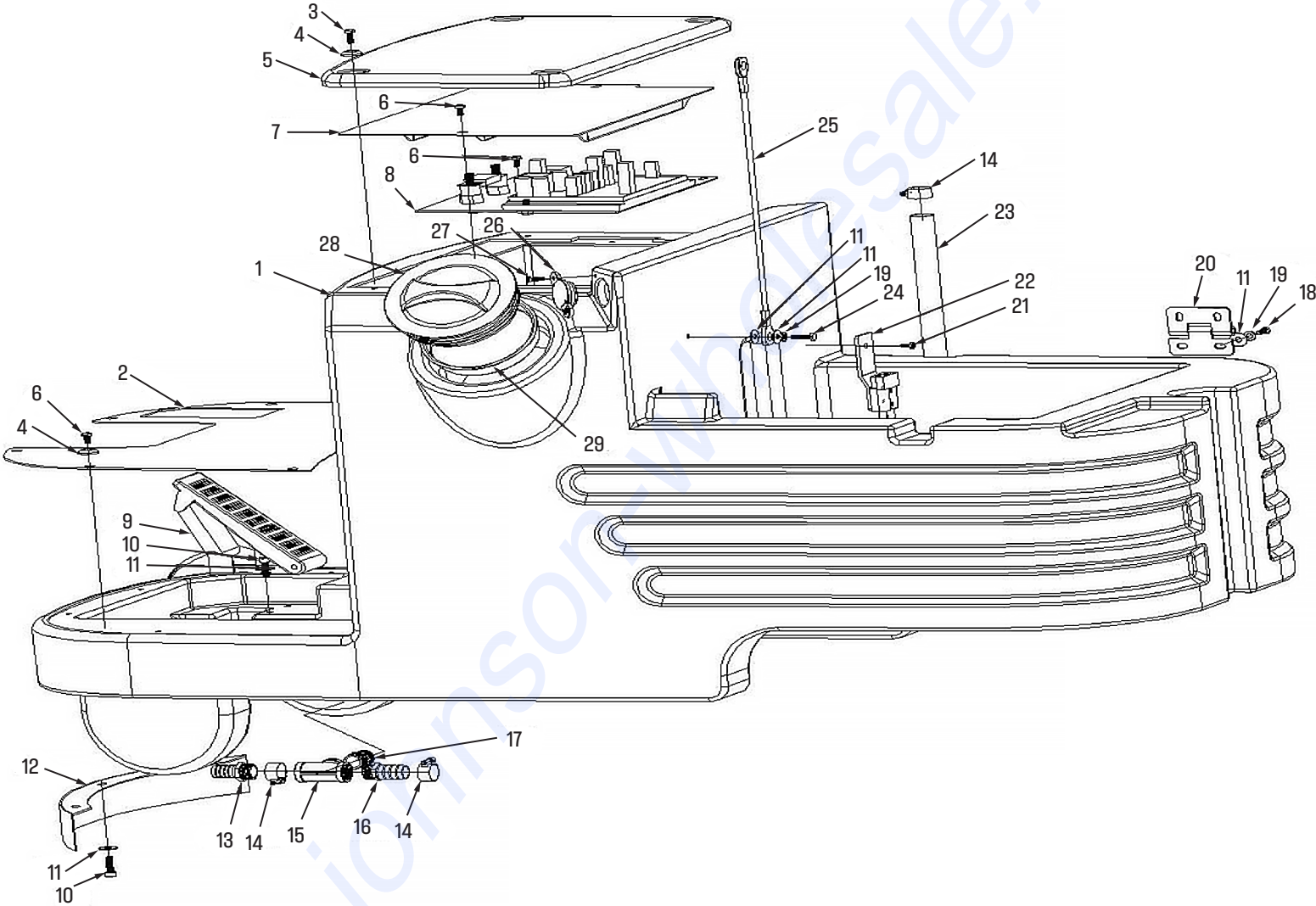
RECOVERY TANK GROUP



RECOVERY TANK GROUP

No	Part No.	Description	Qty
1	W12170	Recovery Tank	1
2	W10839	Pipe Clip-1	3
3	For Reference	Screw M5X10	8
4	W11006	Float Ball Assy-1	1
5	For Reference	WasherD6xD18	10
6	For Reference	Spring washer D6	7
7	For Reference	Screw M5 15	6
8	W10825	Seal, Recovery tank cover	1
9	W12174	Recovery Tank Lid	1
10	W12175	Drain Pipe D15-D10-200	1
11	W12176	Fixing Bracket,	2
12	For Reference	WasherD5-D20-5	3
13	W12177	Acoustic box	1
14	For Reference	Nut M6	3
15	W12178	Bracket, vacuum motor	1
16	For Reference	Screw M6X110	1
17	For Reference	Nut M6	1
18	W12179	Seal, vacuum motor	1
19	W12180	Clip D40-D64	1
20	W12181	Drainage Pipe D38-1000	1
21	For Reference	Screw M6x20	1
22	W12182	Vacuum motor24V-1	1
23	W11011	Seal, Float Assy-1	1

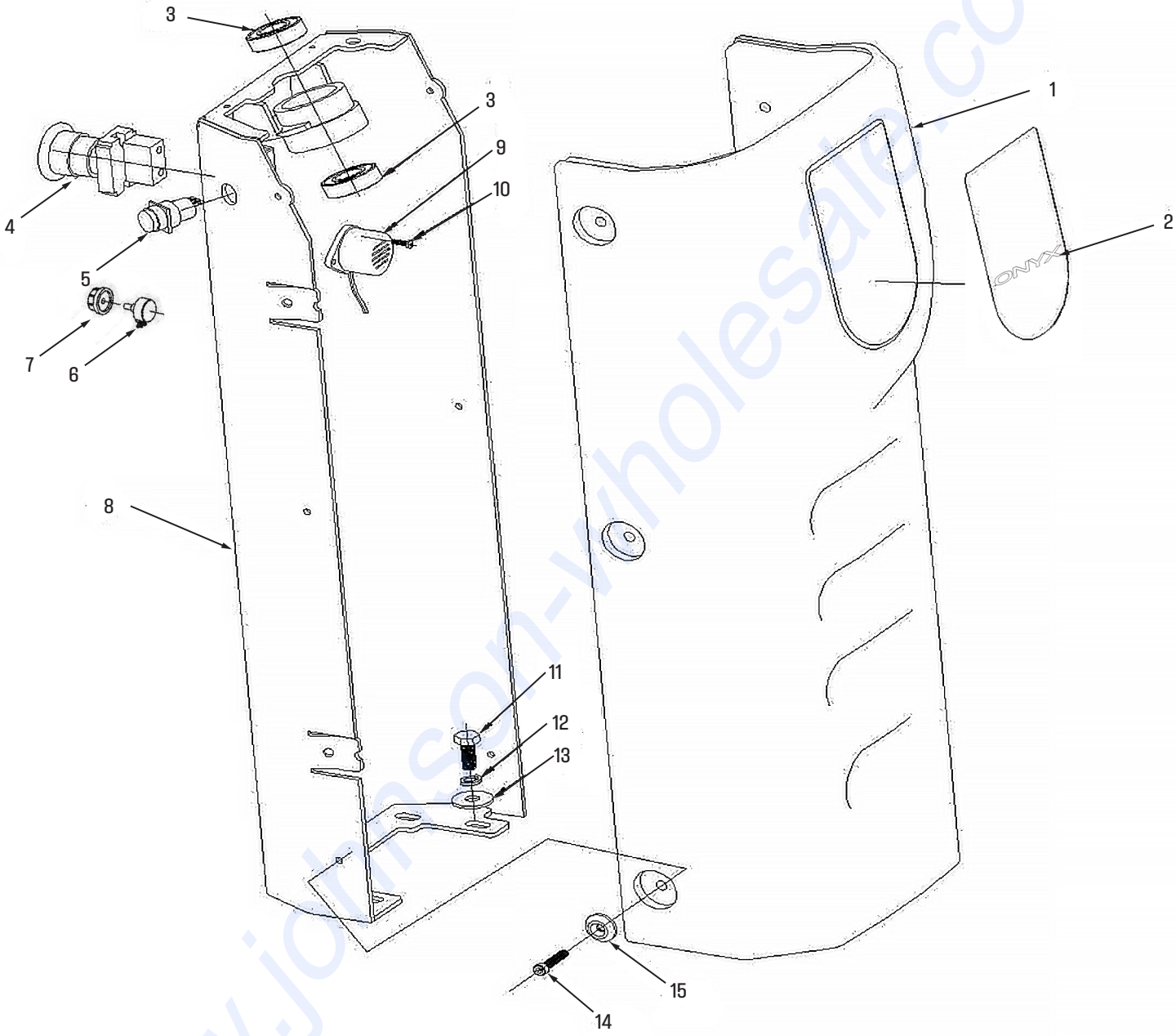
SOLUTION TANK GROUP



SOLUTION TANK GROUP

No	Part No.	Description	Qty
1	W12184	Solution Tank	1
2	W12185	Floor Plate	1
3	For Reference	Screw M5X10	4
4	For Reference	Washer D5-D20-5	10
5	W12186	Seat Cushion	1
6	For Reference	Screw M5X15	9
7	W12187	Circuit Board Cover Plate	1
8	W12188	Circuit Board	1
9	W12189	Accelerator Pedal	1
10	For Reference	Screw M6x20	5
11	For Reference	Washer D6xD18	11
12	W12190	Bumper, front	1
13	W12191	G1/2-D16 Joint	1
14	W12192	Clip D16-D25	2
15	W12193	G1/2 Tee Joint	1
16	W12194	G1/2-D19 Joint	1
17	For Reference	Screw G1/2-G1/2	1
18	For Reference	Screw M5 15	4
19	For Reference	Spring Washer D6	5
20	W12195	Hinge-66-38	2
21	For Reference	Screw M4X10	1
22	W12196	Socket -1	1
23	W12197	Pipe for water level D23-D19-760	1
24	For Reference	Screw M5x20	1
25	W12198	Cable, solution Tank	1
26	W12199	Cap, solution Tank	1
27	For Reference	Screw M4x15	1
28	W12200	Cover, solution Tank	1
29	W12201	Filter, fresh water D112	1

HEAD GROUP

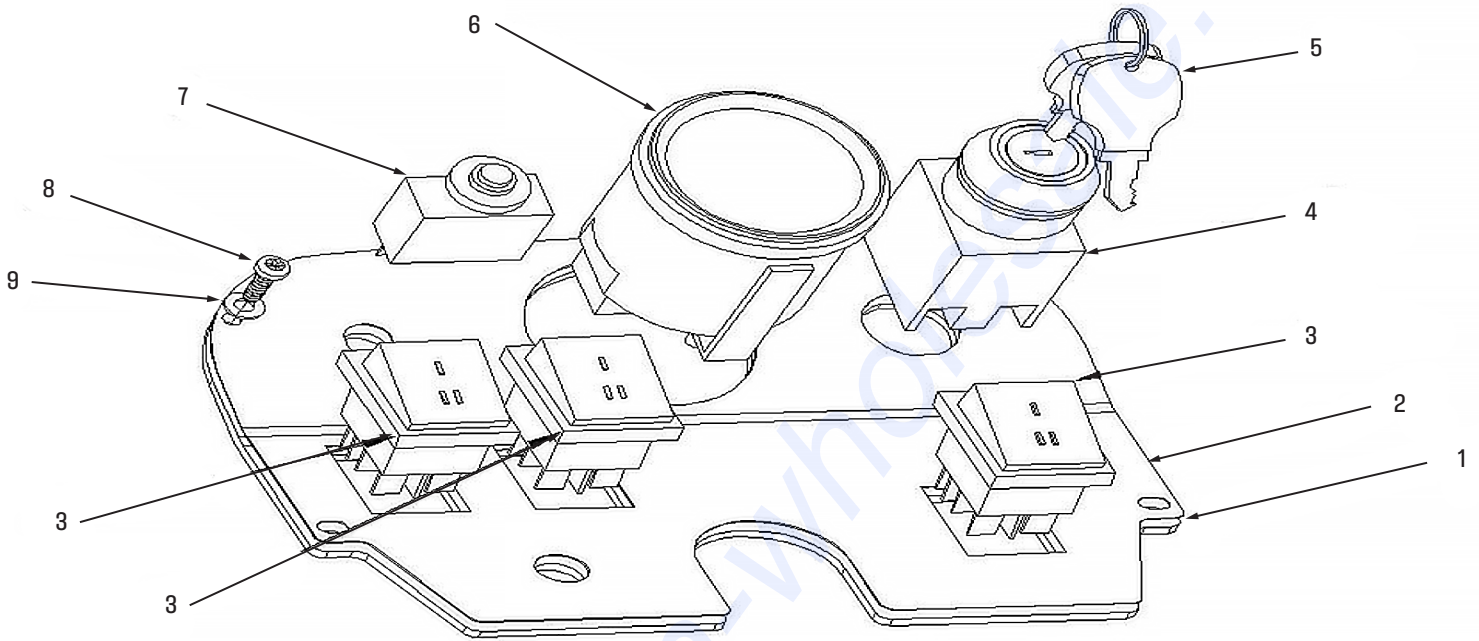


HEAD GROUP

No	Part No.	Description	Qty
1	W12202	Front Plastic Panel	1
2	W12203	RX20 Front ONYX Logo	1
3	W12204	Bearing 6003-D35D17-10	2
4	W12205	Button for Emergency stop	1
5	W12325	Alarming Button	1
6	W12323	Speed Control	1
7	W12324	Thumb Turn Knob	1
8	W12208	Dash Board Support Plate	1
9	W12209	Buzzer-1	1
10	For Reference	ScrewM5X10	2
11	For Reference	ScrewM8x20	4
12	For Reference	Spring Washer D10	4
13	For Reference	Washer D8xD24	4
14	W12210	Screw M5x25	6
15	W12211	Washer D5-D20-5	6

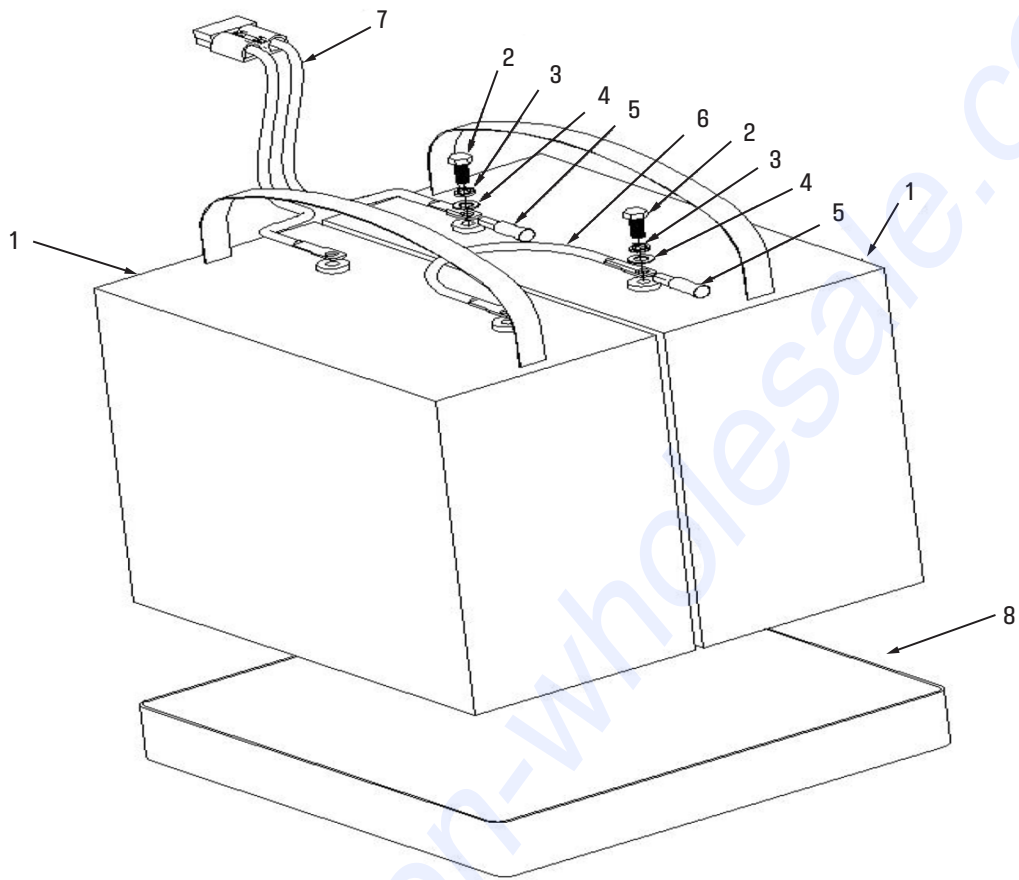
www.johnson-wholesale.com

CONTROL PANEL



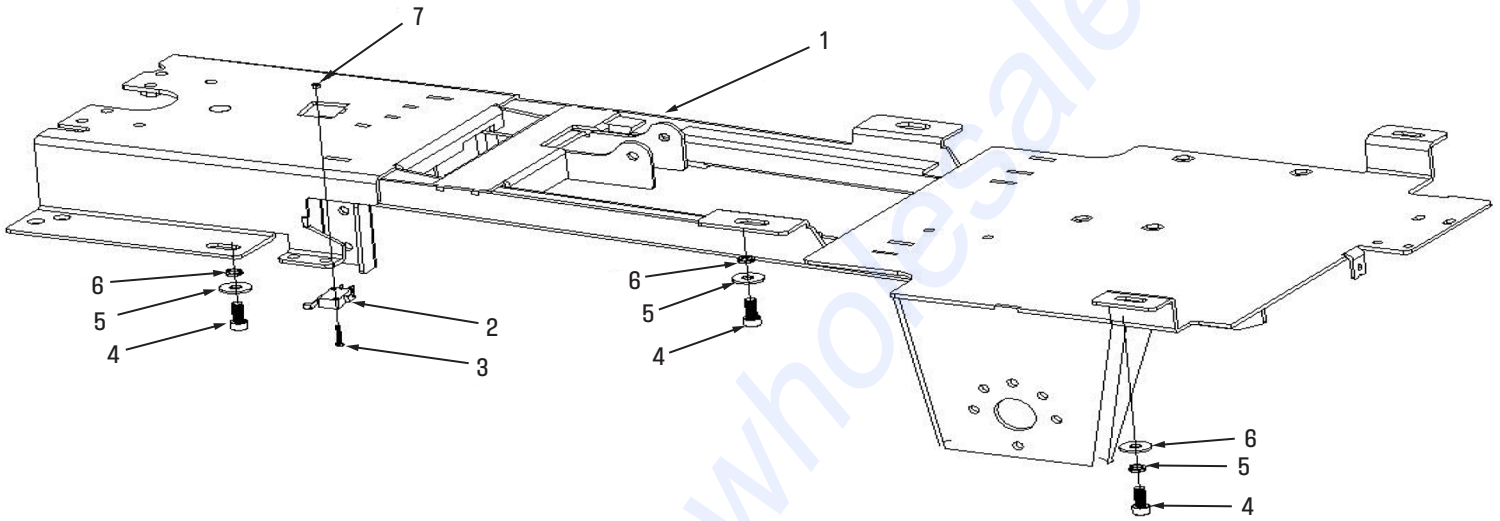
No	Part No.	Description	Qty
1	W12212	Panel	1
2	W12213	Panel Label	1
3	W10840	Toggle Switch	3
4	W10817	Lock with Key	1
5	W10853	Key	1
6	W12217	Electricity Meter-1	1
7	W12218	Thermal Protection Button	1
8	For Reference	Screw M4x15	4
9	For Reference	Washer D4xD9	4

BATTERY GROUP



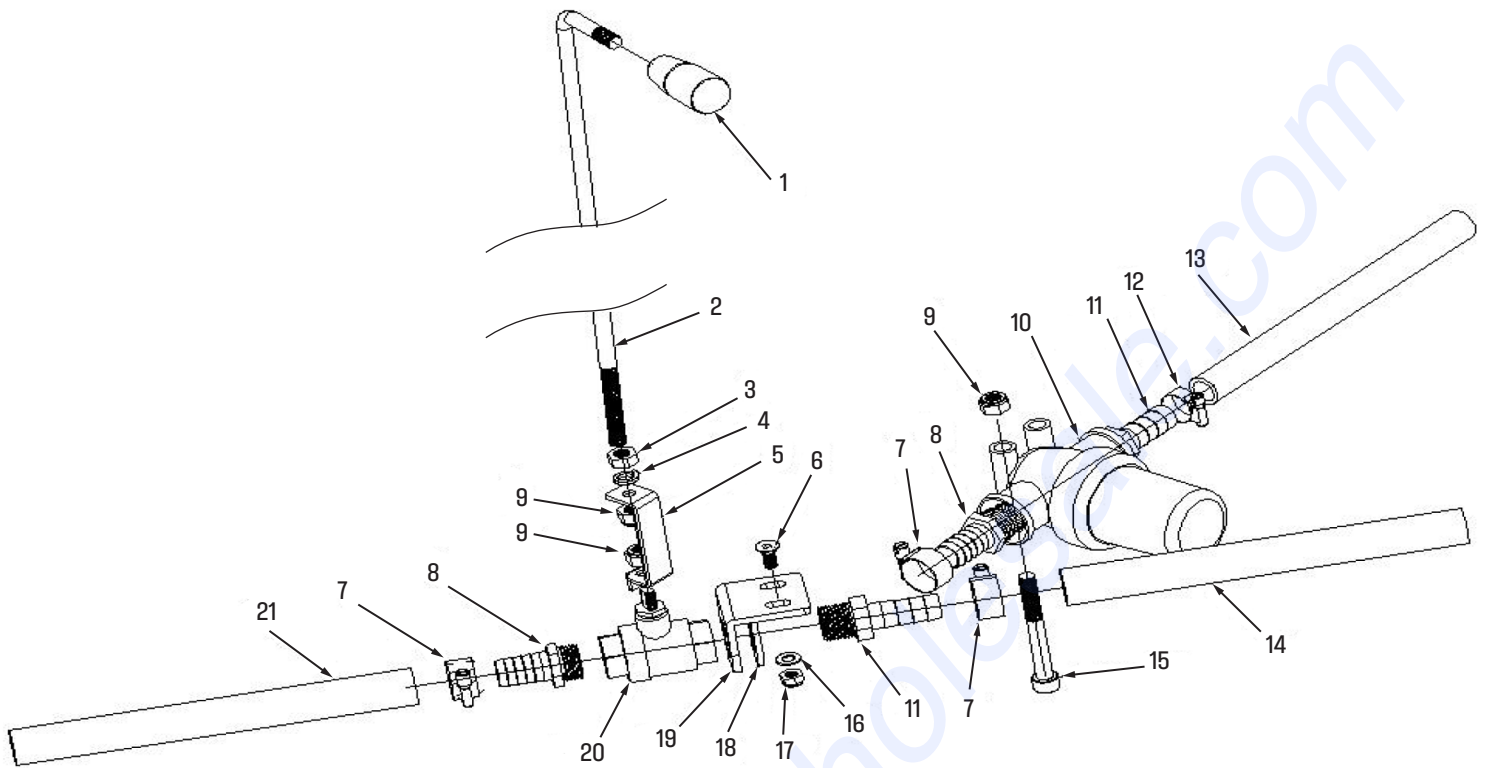
No	Part No.	Description	Qty
1	W12220	Battery 12Vx2-01	2
2	For Reference	Screw M8x20	4
3	For Reference	Spring Washer D8	4
4	For Reference	Washer D8xD16	4
5	W12221	Rubber Battery Cable Cap	4
6	W12222	Battery Connector Cable	1
7	W12223	Battery to Machine Cable	1
8	W12224	Battery Tray	1

BASE GROUP



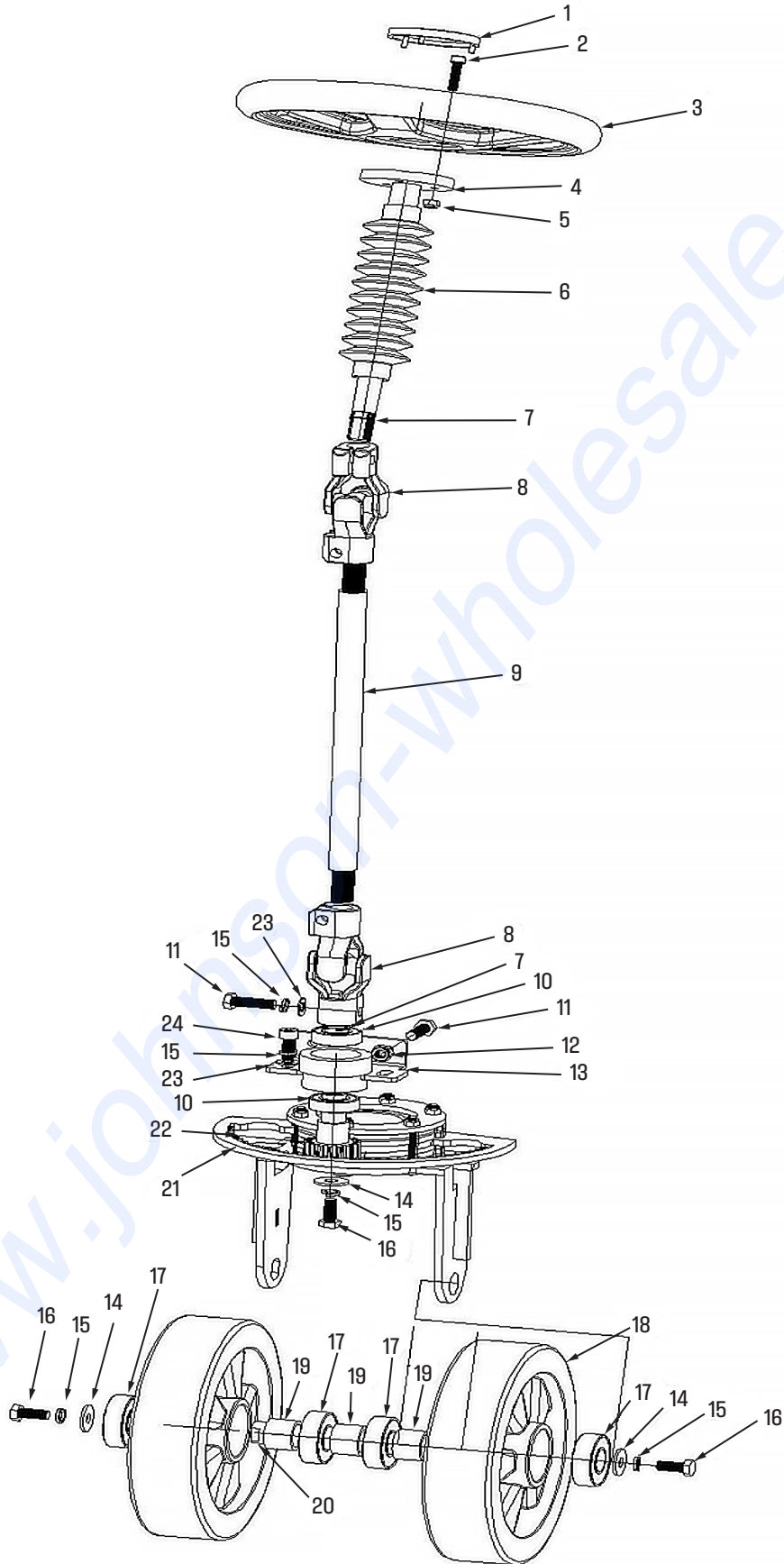
No	Part No.	Description	Qty
1	W12225	Frame	1
2	W12226	Switch	1
3	For Reference	Screw M3x20	2
4	For Reference	Screw M8x20	6
5	For Reference	Spring Washer D8	6
6	For Reference	Washer D8 D24	6
7	For Reference	Nut M3	2

DRAIN GROUP



No	Part No.	Description	Qty
1	W12227	Handle, Drainage-01	1
2	W12228	Rod, Drainage	1
3	For Reference	Nut M8	1
4	For Reference	Spring washer D8	1
5	W12229	Bracket	1
6	For Reference	Screw M6×10	2
7	W12230	Clip D16-D25	3
8	W12231	G1/2-D16 Pipe Joint	2
9	W12232	Nut M8	3
10	W10968	G1/2 Filter, Fresh water	1
11	W12234	G1/2-D15 Pipe Joint	2
12	W12235	Clip D13-D19	1
13	W12236	Pipe D18-D13-570	1
14	W12237	Pipe D21-D16-210	1
15	W12238	Screw M8X70	1
16	For Reference	Nut D6×D12	2
17	For Reference	Screw M6	2
18	For Reference	Washer D20×D37	1
19	W12239	Bracket	1
20	W12240	G1/2 Water Valve	1
21	W12241	Pipe D21-D16-300	1

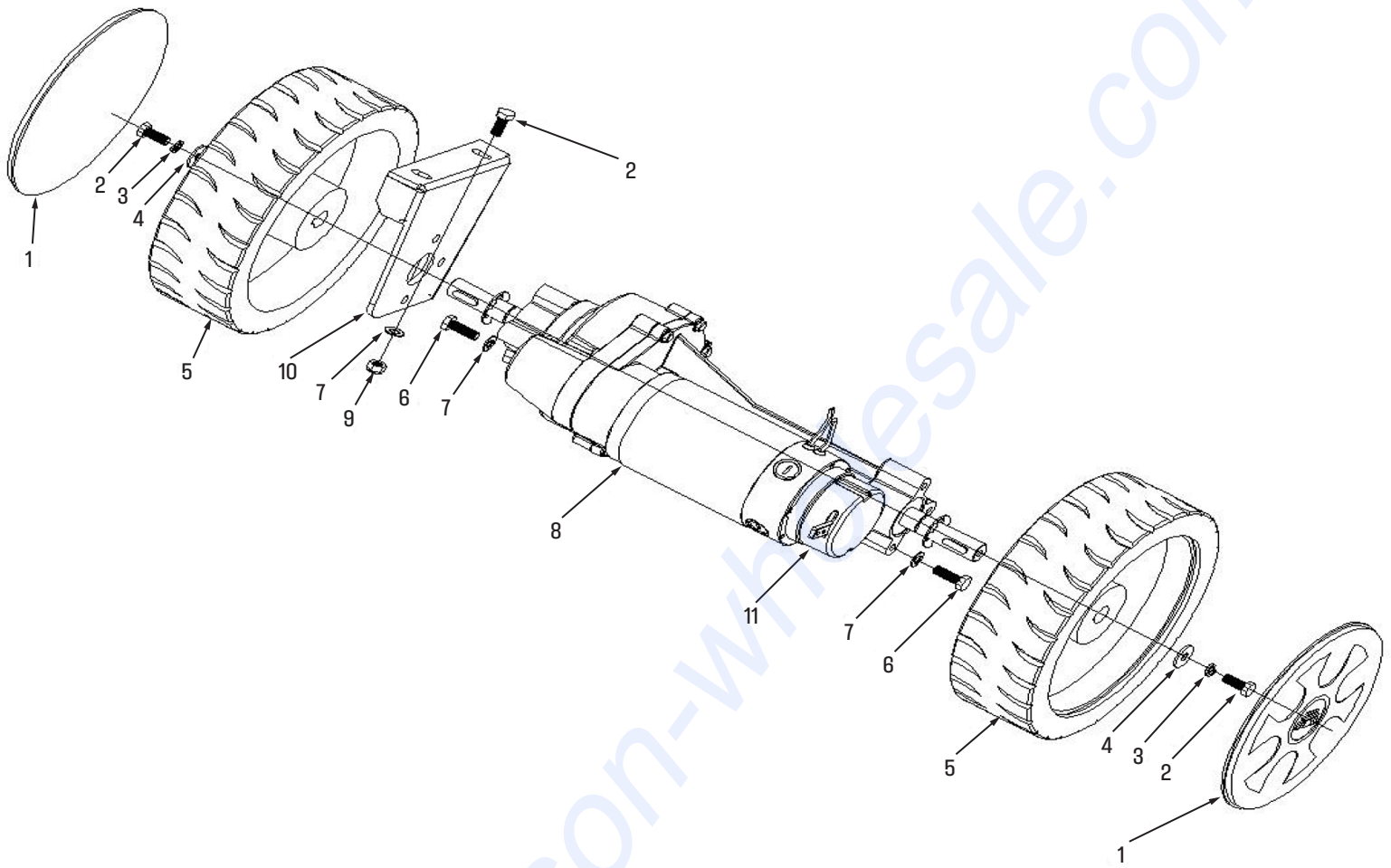
FRONT WHEEL GROUP



FRONT WHEEL GROUP

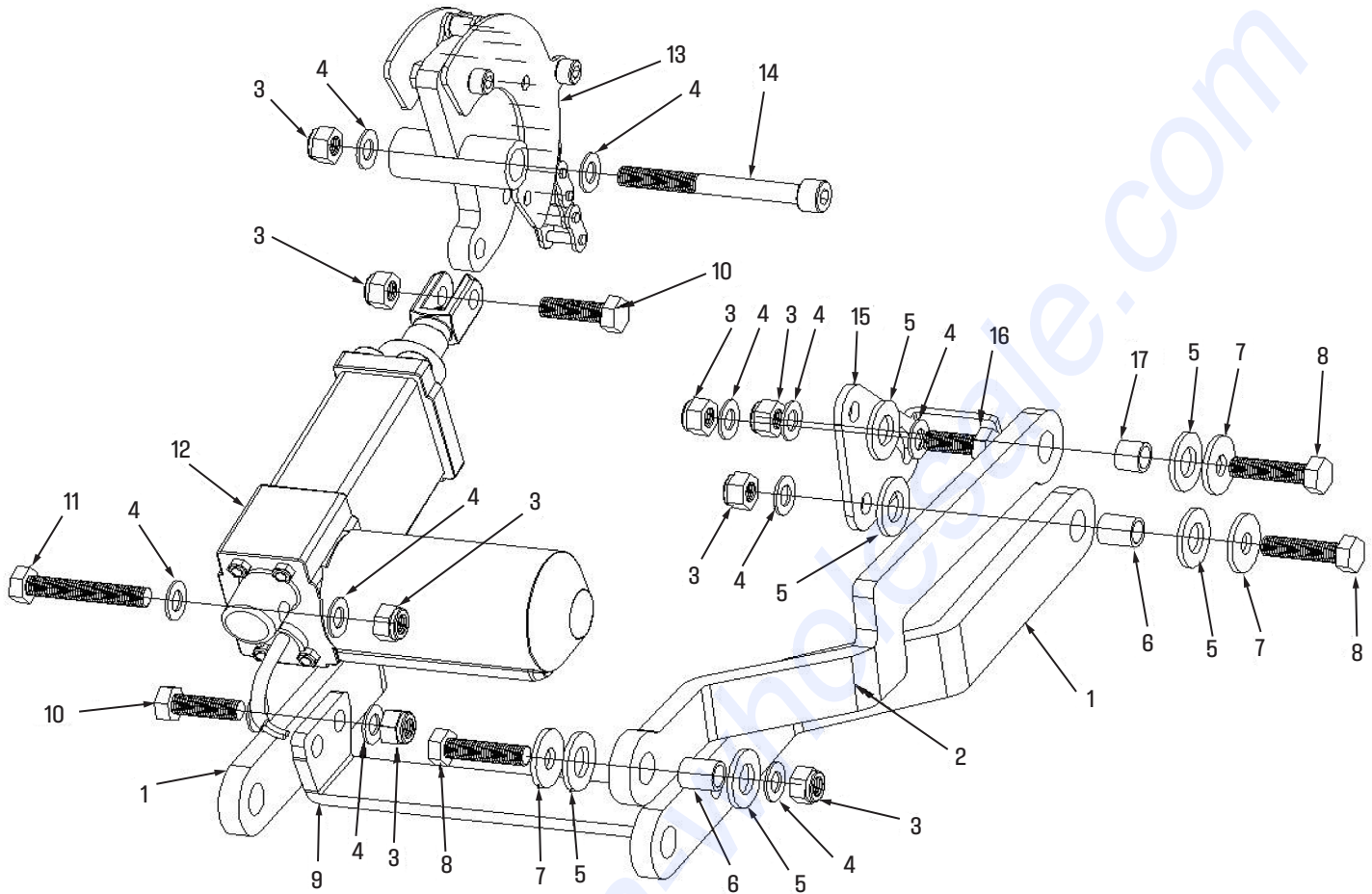
No	Part No.	Description	Qty
1	W12242	Cover, Steering wheel	1
2	For Reference	Screw M6X25	3
3	W12243	Steering wheel	2
4	W12244	Main Shaft, steering wheel	1
5	For Reference	Nut M6	3
6	W12245	Protective Bush-1	1
7	For Reference	Spring D14	2
8	W12246	Universal Joint-1	2
9	W12247	Vertical Axis, steering wheel	1
10	W12248	Bearing6003-D35D17-10	2
11	For Reference	Screw M8X30	4
12	For Reference	Nut M8	2
13	W12249	Bracket, gear	1
14	For Reference	WasherD8D24	3
15	For Reference	Spring Washer D8	5
16	For Reference	Screw M8X20	3
17	W12250	Shaft 6204-D47D20-14	4
18	W10855	Front Wheel	2
19	W12252	Shaft Sleeve D27D21-20	3
20	W12253	Main Axel, front wheel	1
21	W12254	Gear Plate Group	1
22	W12255	Gear Group	1
23	For Reference	Washer D8D16	2
24	For Reference	Screw M8X20	2

REAR WHEEL GROUP



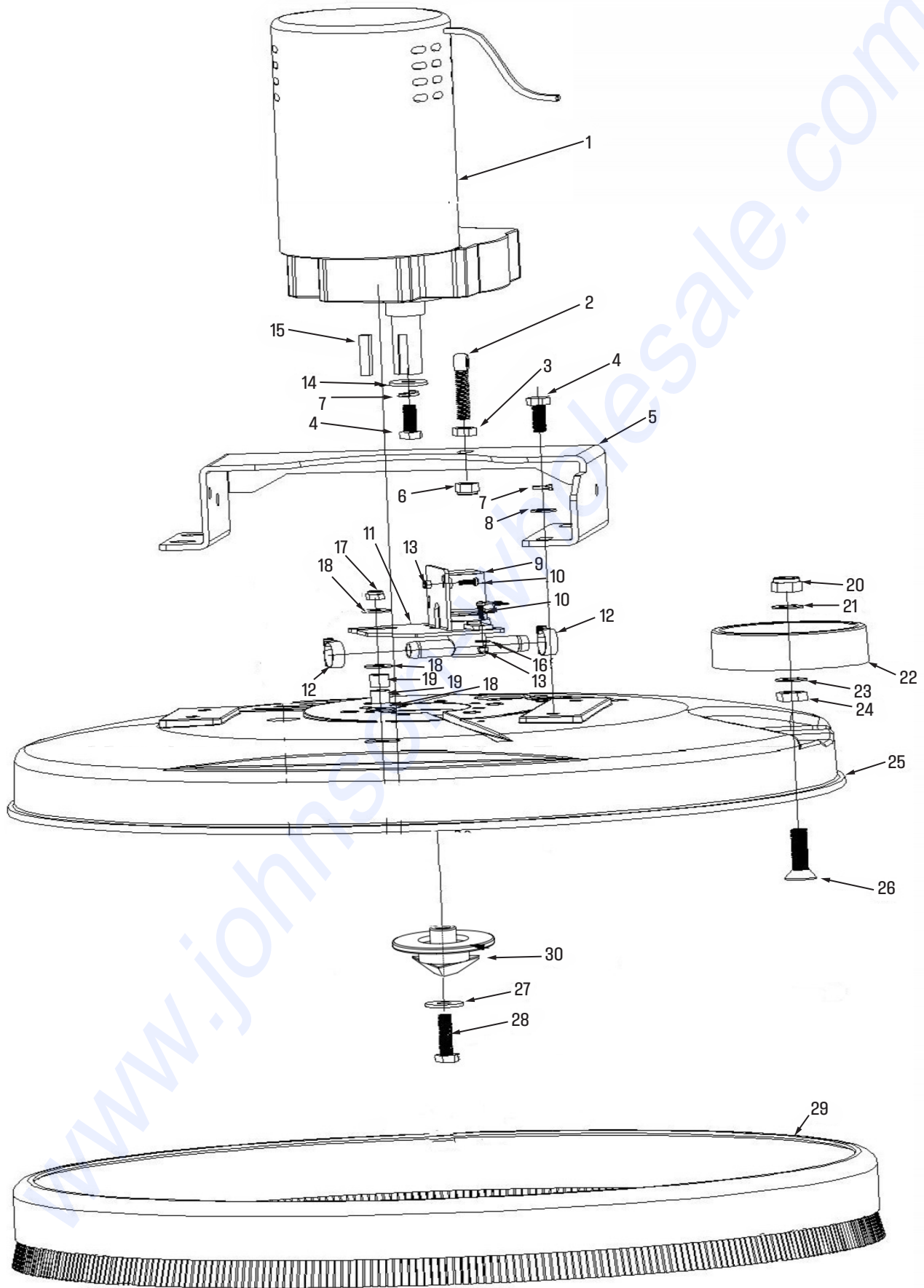
No	Part No.	Description	Qty
1	W12256	Wheel Cap	2
2	For Reference	Screw M8X20	4
3	For Reference	Spring Washer D8	2
4	For Reference	Washer D8D24	2
5	W10841	Rear Wheel	2
6	For Reference	Screw M8X25	2
7	For Reference	Washer D8D16	4
8	W109673	Drive Motor Group 24V-1	2
9	For Reference	Nut M8	2
10	W12259	Fixing Plate, Drive Motor	1
11	W11344	Electric Brake	1

BRUSH LIFTING GROUP



No	Part No.	Description	Qty
1	W12261	Bracket-1,Brush Lifting	2
2	W12262	Bracket-2,Brush Lifting	1
3	W12263	Nut M8	14
4	W12264	Washer D8D16	19
5	W12265	Washer, Plastic D12D24	12
6	W12266	Sleeve D12D9-13	5
7	For Reference	Washer D8D24	6
8	For Reference	Screw M8X30	6
9	W12267	Bracket-3,Brush Lifting	1
10	W12268	Screw, M8X25	5
11	W12269	Screw, M8X45	1
12	W12270	Lifting Motor Group 24V-1	1
13	W12271	Bracket Group, Chain Wheel	1
14	For Reference	Screw M8X70	1
15	W12272	Bracket, Brush	1
16	For Reference	Screw M8X20	1
17	W12273	Sleeve D12D9-9	1

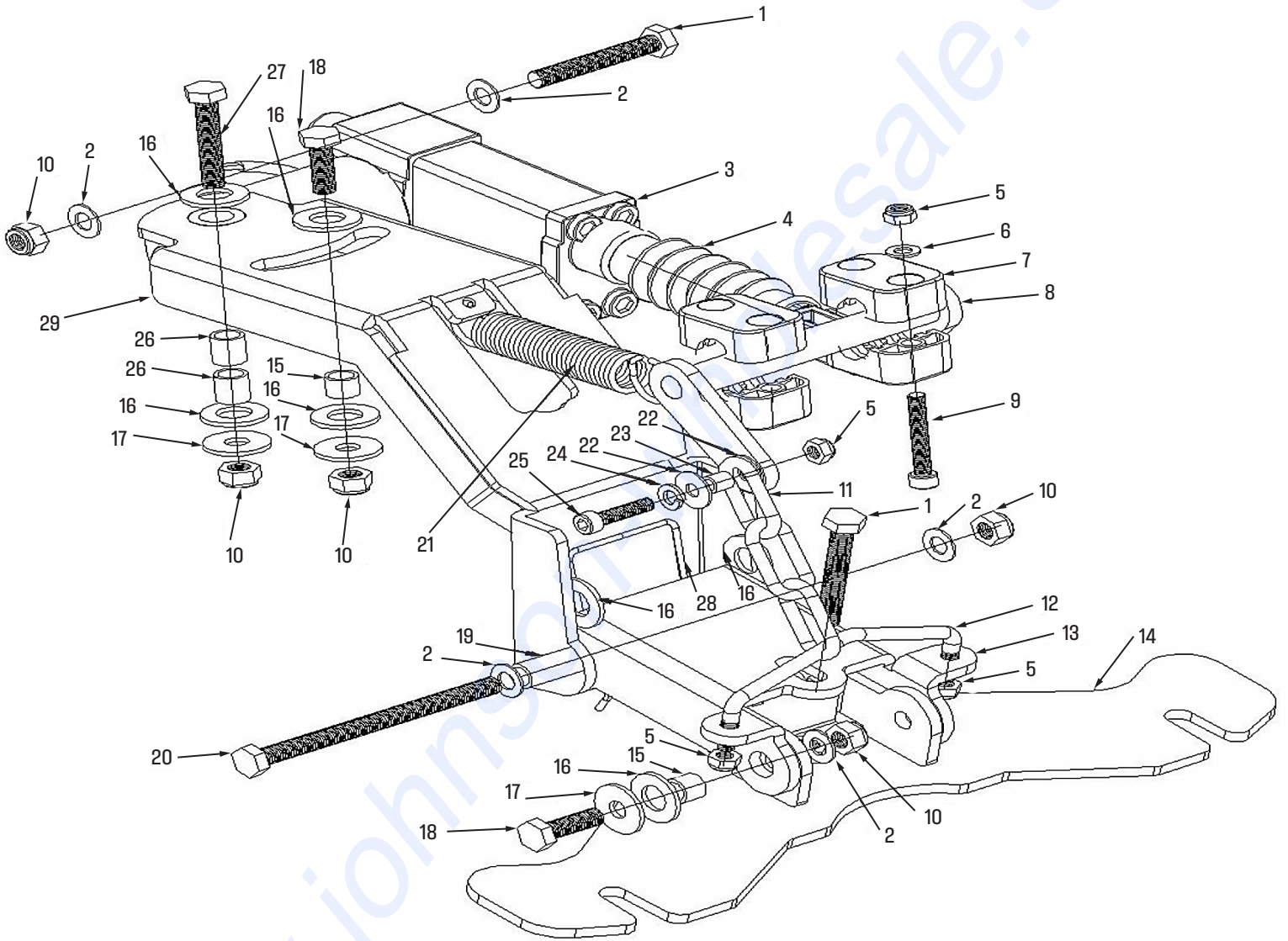
BRUSH ASSEMBLY GROUP



BRUSH ASSEMBLY GROUP

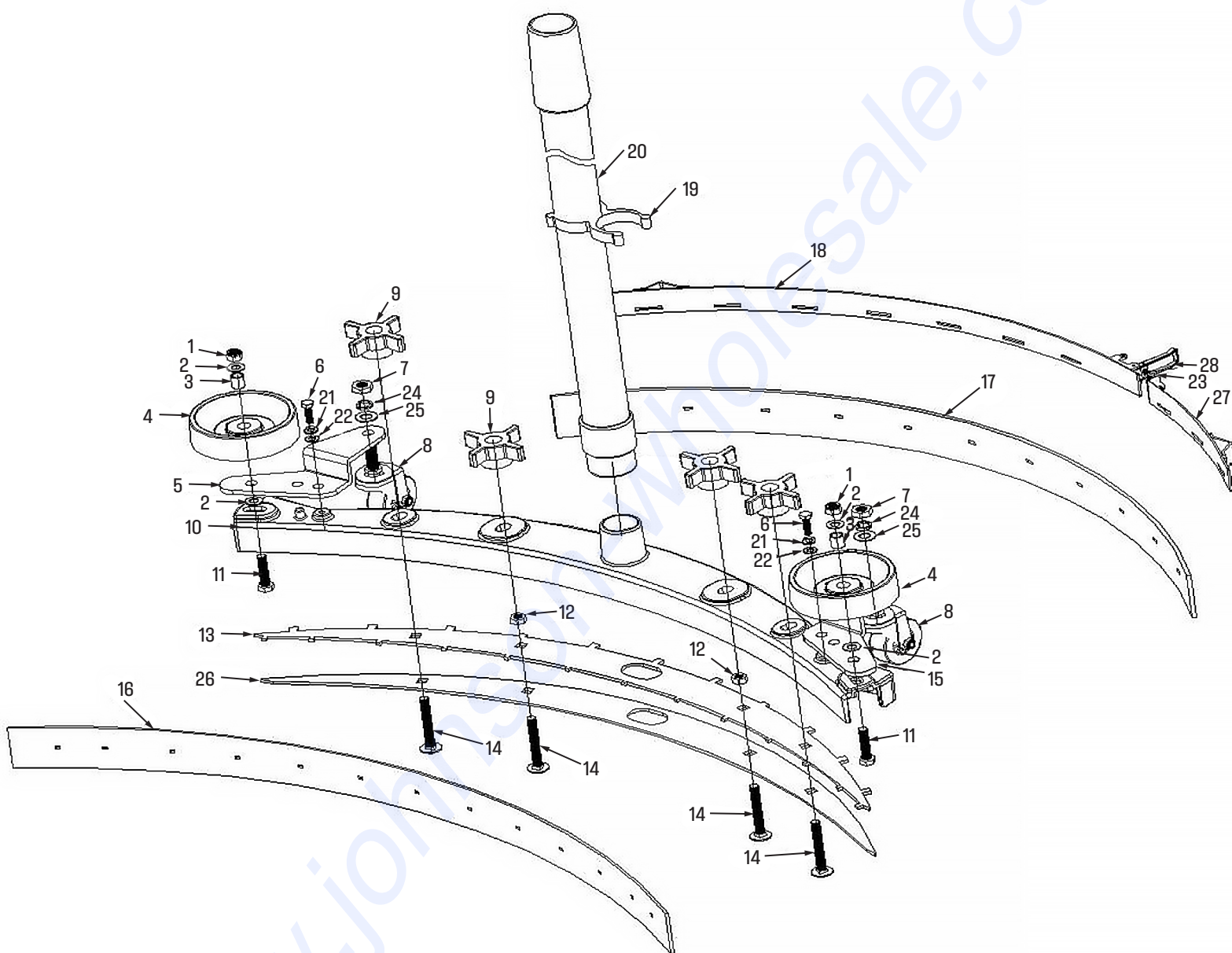
No	Part No.	Description	Qty
1	W12274	Brush Motor HY247	1
2	For Reference	Screw M8X30	1
3	For Reference	Nut M8	1
4	For Reference	Screw M8X20	5
5	W12275	Bracket, Brush	1
6	For Reference	Nut M8	7
7	For Reference	Spring Washer D8	4
8	For Reference	Washer D8D16	4
9	W12276	Electric Valve-1	1
10	For Reference	Screw M3X10	4
11	W12277	Bracket, Electric Valve	1
12	W12278	Clip D13-D19	3
13	For Reference	Nut M3	4
14	For Reference	WasherD8D24	7
15	W12279	Flat Key 6-6-30	1
16	For Reference	Washer D4D9	2
17	For Reference	Nut M6	1
18	For Reference	Washer D6D18	1
19	For Reference	Sleeve D12D9-13	8
20	For Reference	Nut M10	1
21	For Reference	Washer D10D20	1
22	W12284	Bumper wheel-1	1
23	For Reference	Washer D10D20	1
24	For Reference	Nut M10	1
25	W12285	Brush cover	1
26	For Reference	Screw M10X30	1
27	For Reference	WasherD8D24	1
28	For Reference	Screw M8X30	1
29	W10868	Skirt, Brush-1	1
30	W10813	Flange, brush	1

SQUEEGEE LIFTING GROUP



SQUEEGEE LIFTING GROUP

No	Part No.	Description	Qty
1	W12289	Screw M8X20	2
2	For Reference	Washer D8D16	6
3	W12290	Lifting Motor Group 24V-2	1
4	W12291	Sleeve, Lifting Motor-1	1
5	For Reference	Nut M6	7
6	W12292	Washer D6D12	4
7	W12293	Clip, Green plastic pipe	4
8	W12294	Lifting Arm, Squeegee	1
9	For Reference	Screw M8X20	4
10	W12295	Nut M8	6
11	W12296	Chain, Assy	1
12	W12297	U type Rod, Squeegee	1
13	W12298	Bracket-2, Lifting, Squeegee	1
14	W12299	Bracket-3, Lifting, Squeegee	1
15	For Reference	Sleeve D12D9-9	3
16	W12300	Washer D12D24	8
17	W12301	Washer D8D24	4
18	W12302	Screw M8X25	2
19	For Reference	Sleeve D12D9-80	1
20	W12303	Screw M8X110	1
21	For Reference	SpringD19D2.5-75	1
22	For Reference	Washer D6D18	2
23	For Reference	Sleeve D8D6-8	1
24	For Reference	Spring Washer D6	1
25	For Reference	Screw M6X25	1
26	For Reference	Sleeve D12D9-13	2
27	W12304	Screw M8X45	1
28	For Reference	Spring-1	1
29	W12305	Bracket-1 Lifting,Squeegee	1



SQUEEGEE GROUP

No	Part No.	Description	Qty
1	For Reference	Nut M8	2
2	For Reference	Washer D8D16	4
3	For Reference	Sleeve D12D9-13	2
4	W10845	Bumper Wheel-1	2
5	W11138	Bracket, right wheel, squeegee	1
6	For Reference	Screw M6X20	2
7	For Reference	Nut M10	2
8	W10870	Wheel, Squeegee Assy-1	2
9	W11139	Star Knob-1	4
10	W11140	Frame, Squeegee Assy	1
11	For Reference	Screw M8x35	2
12	For Reference	Nut M8	2
13	W12311	Fixing Plate, Blade-1	1
14	W12312	Screw M8x60	4
15	W11143	Bracket, right wheel, squeegee	1
16	W10863	Front Blade-01 Squeegee Assy	1
17	W10864	Rear Blade-01 Squeegee Assy	1
18	W11143	Fixing part, Assy, Rear Blad	1
19	W12317	Clip-1,X type	1
20	W12318	Hose D38-1300, Sewage water	1
21	For Reference	Spring Washer D6	2
22	For Reference	Washer D6D12	2
23	For Reference	Nut M5	1
24	For Reference	Spring Washer D10	2
25	For Reference	Washer D10D20	2
26	W12319	Fixing Plate-2 Blade	1
27	W12320	Fixing Part, rear blade, Left	1
28	For Reference	Screw M5x50	1

WIRING DIAGRAM

