

ONYX

TECHNOLOGY POWERING A CLEANER FUTURE



Order Today from
www.johnson-wholesale.com



DX20
BATTERY AUTOSCRUBBER

DX20 DX20T DX20C

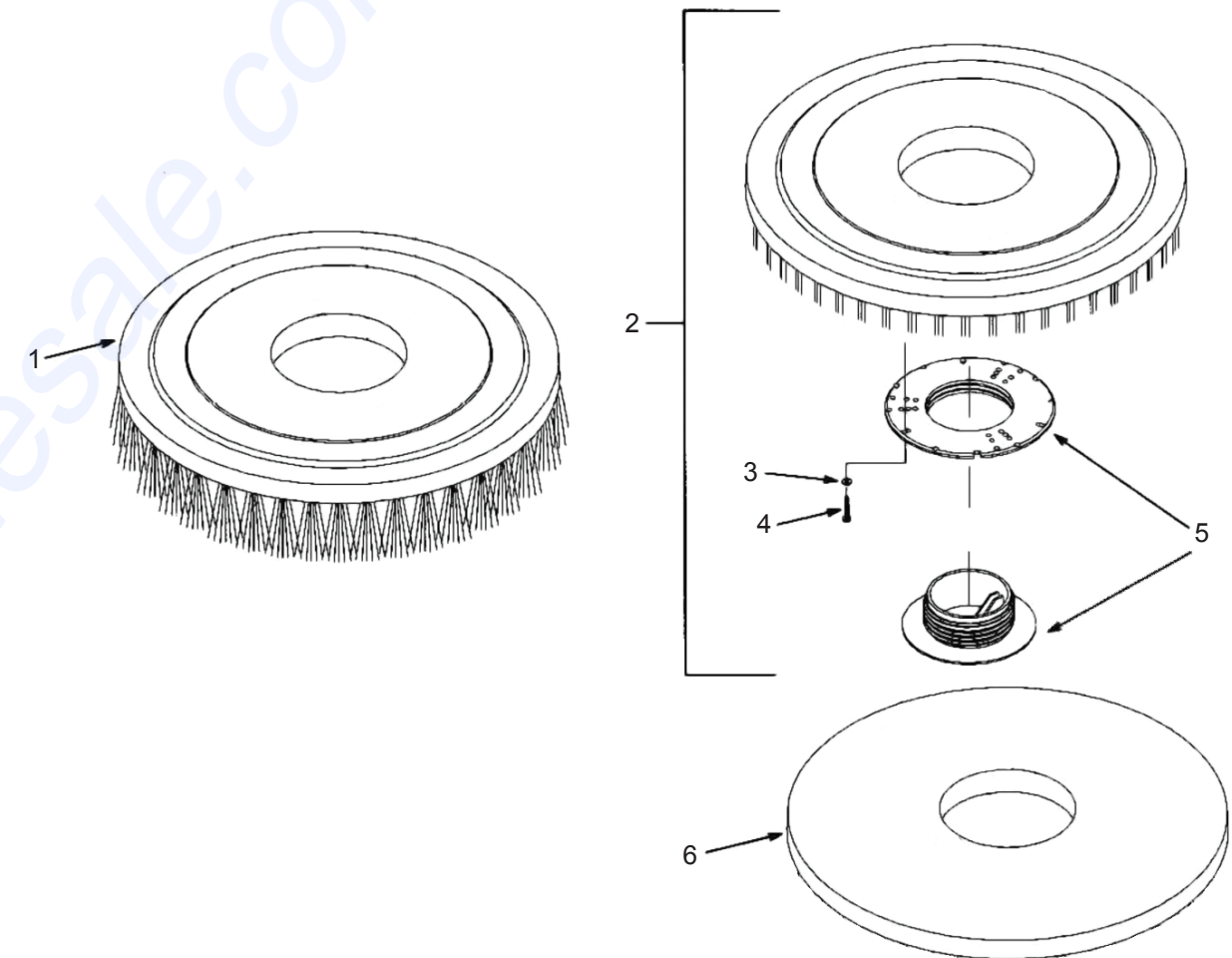
DX20C on last page

ILLUSTRATED PARTS LIST

Revision 01-26-2026

W11150_REVJ 01/26/2026

Pads and Brushes	3
Recovery Tank Group	4-5
Vacuum Motor Assembly	6-7
Frame Group	8-9
User Control Assembly	10-11
User Control Assembly 2	12-13
Frame Assembly Group	14-15
Head Assembly Group	16-17
Head Lifting Assembly Group	18-19
Water Componentes	20-21
Squeegee Assembly Group	22-23
Electrical Components	24-25
Chargin System	26
Additional Parts (DX20T)	27
DX20C Cylindrical Parts	28-29
Wiring Diagram DX20	30
Wiring Diagram DX20T	31



How to order spare parts:

Parts and supplies may be ordered by phone, by fax or by email.

- A. Identify the machine model
- B. Identify the machine serial number
- C. Provide the part number and quantity

Provide your detail logistic information

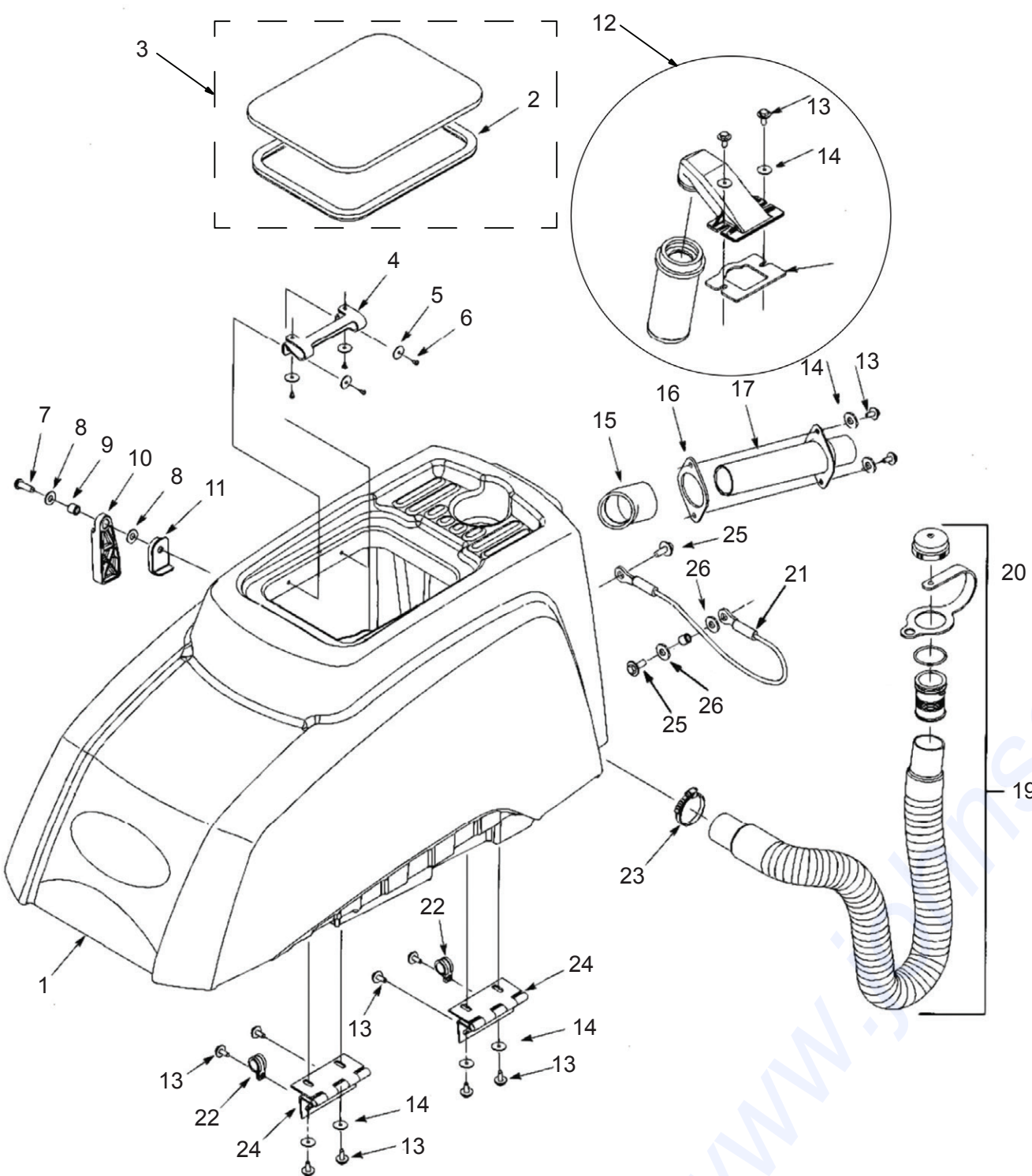
Provide your name, company name, shipping address, phone number and purchase order number.

No	Part No.	Description	Qty
1	W10846	Brush - 20" Standard Stiffness	1
1	W10887	Brush - 20" Extra Stiff	1
2	W10847	Pad Driver Assy - 20"	1
3	For Reference	Flat Washer, M4	1
4	For Reference	Screw, Phl, M4x25	1
5	W10848	Pad Holder, Clip & Housing (Legacy Design)	1
5	W13211	Pad Holder, Clip & Housing (Current, replaces W10848)	1
6	W11017	White Pad, Polishing	1
6	W11018	Light Red Pad, Scrubbing	1
6	W11019	Medium Black Pad, Stripping Heavy	1



12605 Commerce Station Dr • Suite 700
 Huntersville, NC 28078
 704.827.9368

RECOVERY TANK GROUP

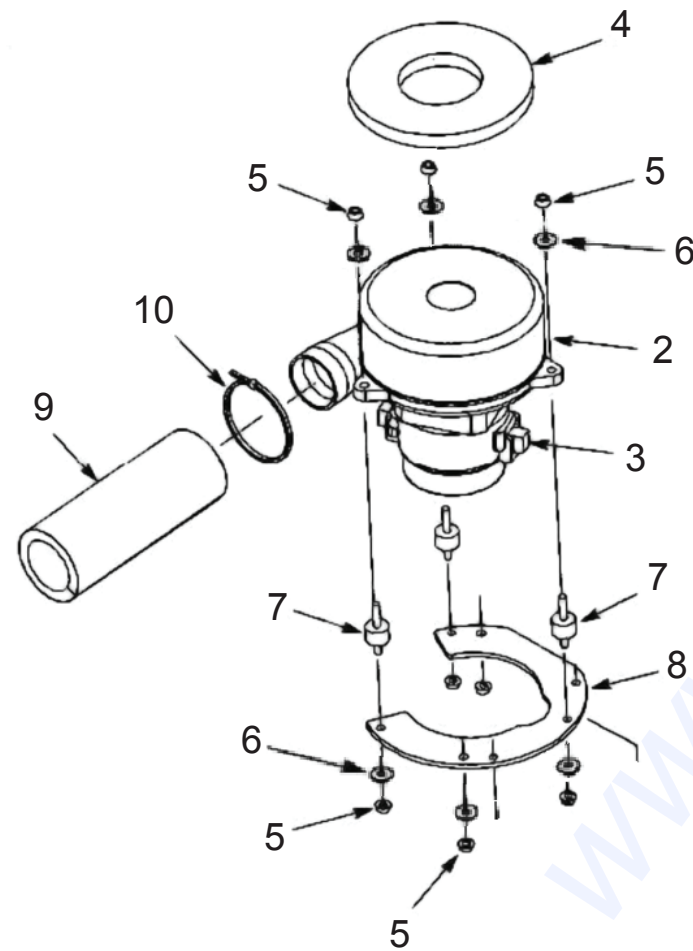
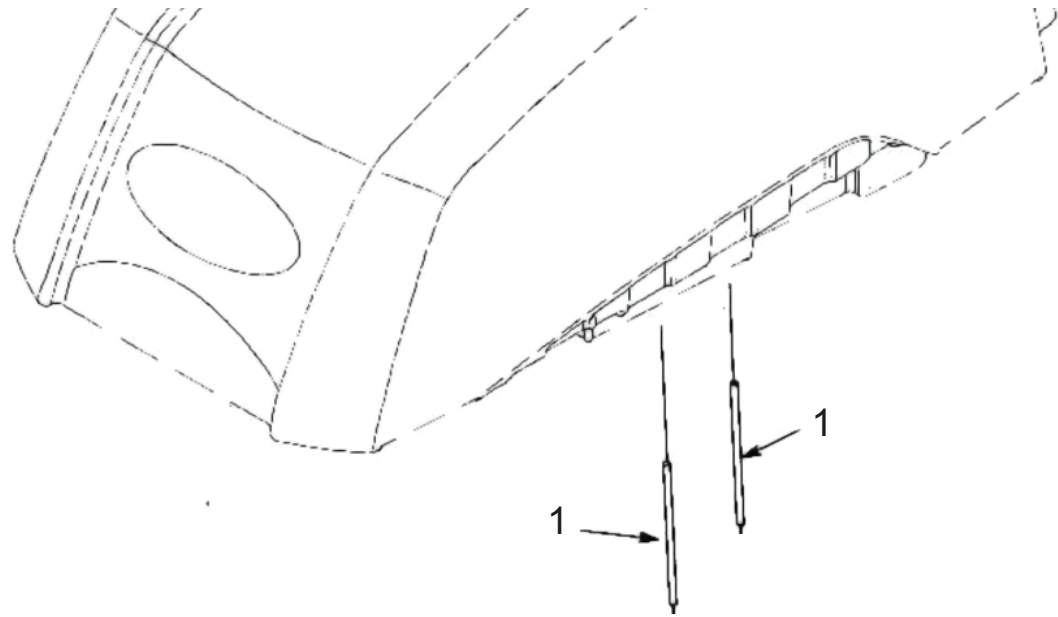


RECOVERY TANK GROUP

No	Part No.	Description	Qty
1	W11001	Recovery Tank	1
2	W10850	Seal, Recovery Tank Cover	1
3	W10888	Cover & Seal - Recovery Tank	1
4	W11002	Flexible Strap Hinge	1
5	For Reference	Washer, M4	4
6	For Reference	Screw, M4	4
7	W12144	Screw, Hex, M8×25	1
8	W12301	M8 Washer	2
9	W11156	Sleeve	1
10	W11004	Stop, Tank Lifting	1
11	W11005	Bracket, Stop	1
12	W10851	Floating Ball Shutoff Tube Assembly	1
13	For Reference	Screw, Hex, M6×12	3
14	For Reference	Flat Washer, 6mm×18mm×1mm	3
15	W11007	Elbow	1
16	W11008	Gasket	1
17	W11009	Hose	1
18	W11011	Sleeve	1
19	W10865	Drainage Hose Assy, Recovery Tank	1
20	W11012	Plug Assy, Drainage Hose	1
21	W11013	Steel Cable w/ Eyelets	1
22	W11014	Clip, Wire	1
23	W10952	Hose Clamp	1
24	W11016	Hinge	1
25	For Reference	Screw, Hex, M6×12	2
26	For Reference	Flat Washer, 6mm×18mm×1mm	2

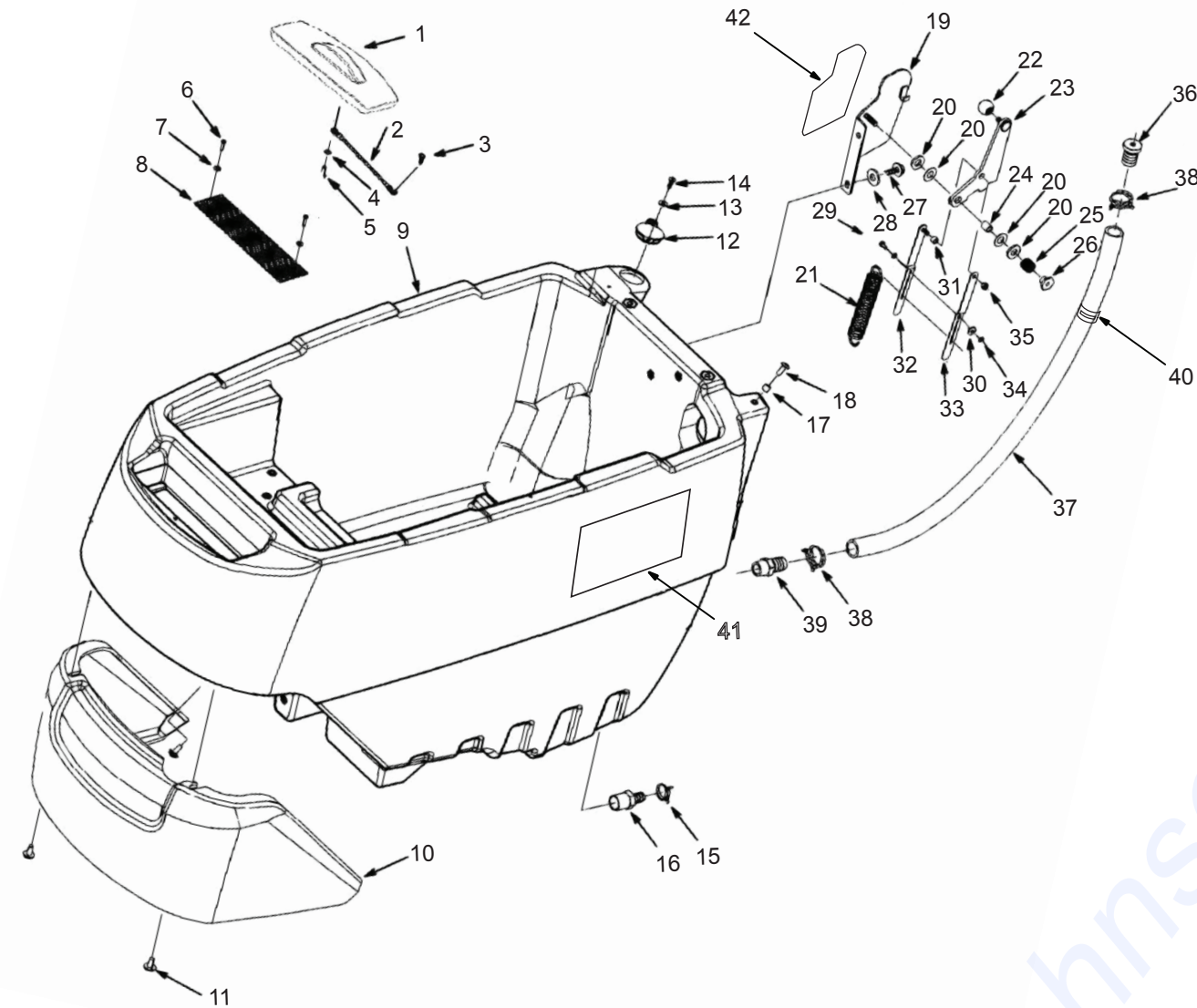
VACUUM MOTOR ASSEMBLY

VACUUM MOTOR ASSEMBLY



No	Part No.	Description	Qty
1	W11020	Mounting Rod 6×118mm	2
2	W10872	Vacuum Motor, 24V	1
3	W11022	Carbon Brush Kit	1
4	W11023	Rubber Pad	1
5	For Reference	Nut, M6	6
6	W12292	Flat Washer, 6mm×18mm×1mm	6
7	W11025	Vibration Isolator	3
8	W11026	Mounting Plate, Motor	1
9	W10954	Noise Muffler	1
10	W11028	Hose Clamp	1

FRAME GROUP

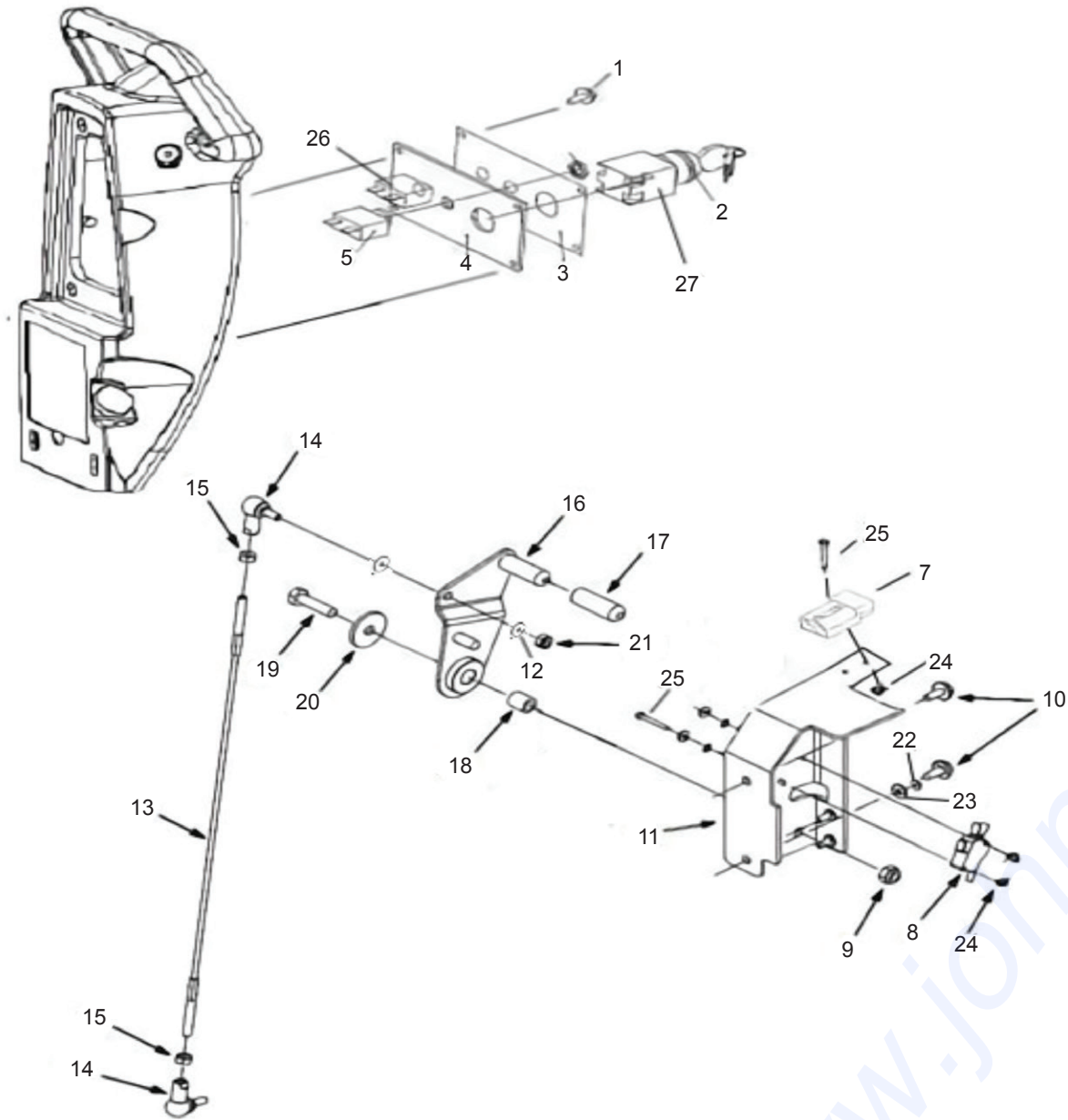


No	Part No.	Description	Qty
1	W11029	Cover, Fresh Water Fill	1
2	W11030	Chain	1
3	For Reference	Screw, Phl, M4×10	1
4	For Reference	Washer M4	1
5	For Reference	Screw, Phl , M4×12	1
6	For Reference	Screw, Phl, M3×20	2
7	For Reference	Washer, M3	2
8	W11031	Filter Screen, Fresh Water Fill	1
9	W11032	Fresh Water Tank	1
10	W11033	Front Guard	1

FRAME GROUP

No	Part No.	Description	Qty
11	For Reference	Screw, Hex, With Washer, M6×16	2
12	W11034	Cover, Fresh Water Hose Fill	1
13	For Reference	Washer M4	1
14	For Reference	Screw, M4×10	1
15	W12278	Hose Clamp	1
16	W11132	Water Fitting Joint	1
17	W11037	Hook	1
18	For Reference	Screw, M4×16	1
19	W11038	Bracket, Brush Lifting	1
20	W12300	Washer, Nylon	4
21	W11040	Spring, Head Pressure	1
22	W11041	Handle Knob	1
23	W11042	Lever Arm, Brush Lifting	1
24	W11156	Sleeve 8.5 x 12 x 15	1
25	W11044	Spring	1
26	W11045	Nut, Connect Lifting Rod	1
27	For Reference	Screw, Hex, 20	1
28	W12301	M8 Washer	1
29	For Reference	Screw, Phl, M5×12	1
30	For Reference	Washer, M4	1
31	W11011	Sleeve	1
32	W11047	Lever, Spring, Left	1
33	W11048	Lever, Spring, Right	1
34	For Reference	Nut, M5	1
35	For Reference	Nut, M6	1
36	W11049	Connector, Water Pipe	1
37	W11050	Hose - Water Level Indicator (25")	1
38	W11051	Hose Clamp	2
39	W11052	Joint, Water Pipe	1
40	W13464	Metal Clamping bracket for hose	1
41	W13461	DX20 Side Label	1
42	W13642	Lifting Bracket Side Label	1

USER CONTROL ASSEMBLY

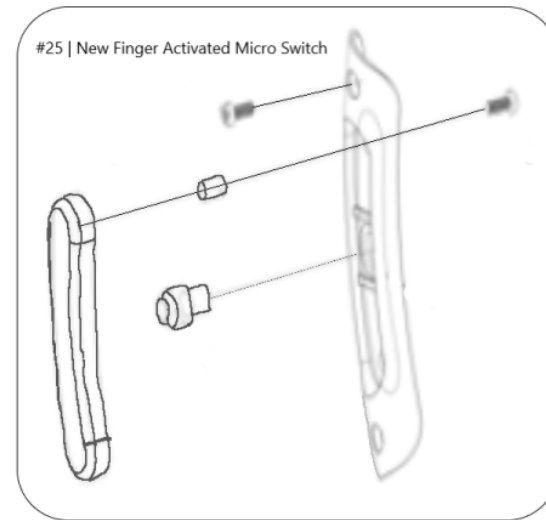
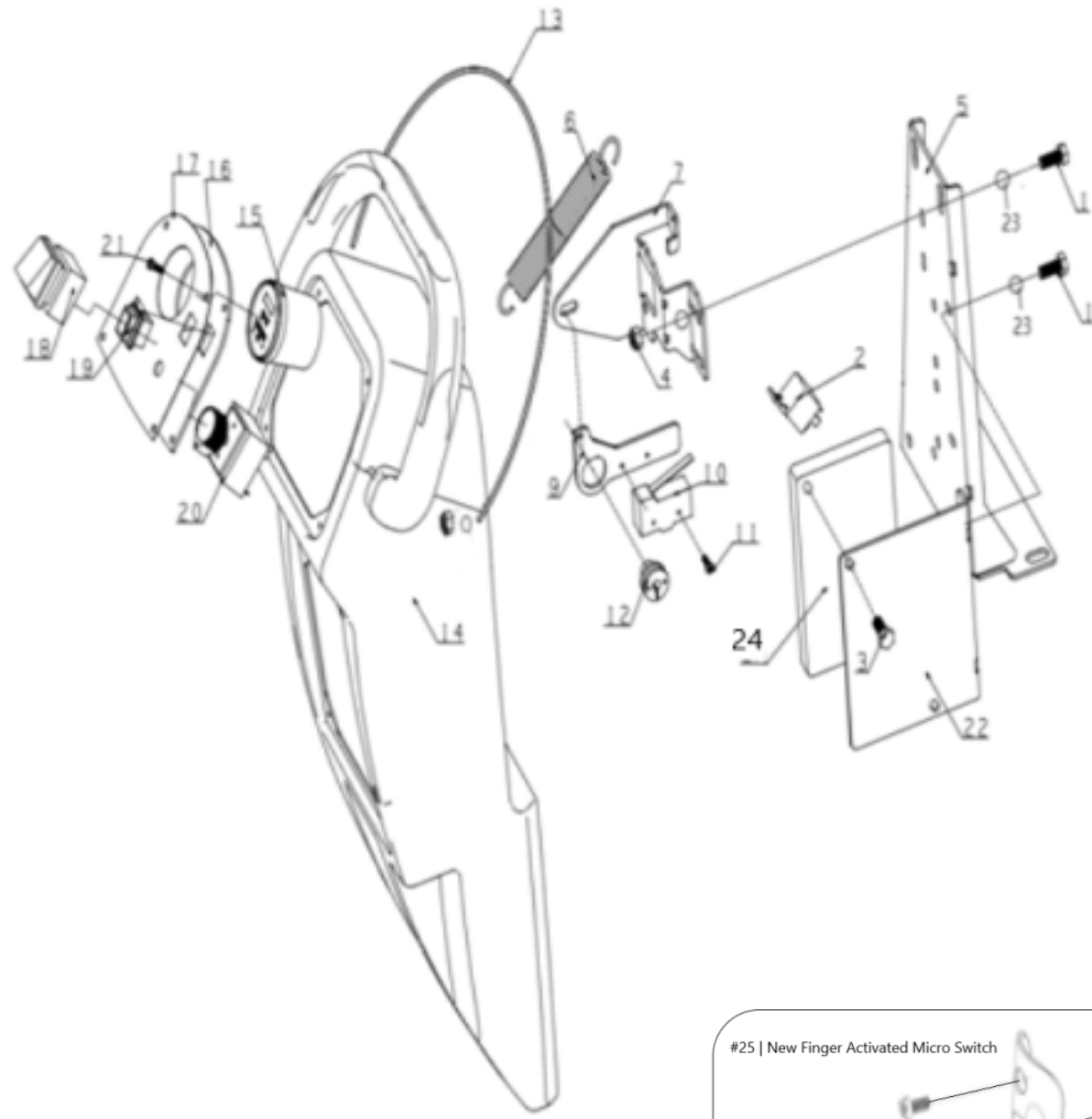


USER CONTROL ASSEMBLY

No	Part No.	Description	Qty
1	For Reference	M4*10 Pan Head Cross	4
2	W10853	Screw Key	1
3	W11070	Panel paper	1
4	W11069	Key switch panel	1
5	W12356	40A overload protection	1
6	For Reference	Thermal protection fixing screw	2
7	W10858	Small Red Electrical Plug	1
8	W11260	Micro switch for Vacuum	1
9	W12263	M8Lock Nut	1
10	For Reference	M6*15 Bolt, Hex head	2
11	W11071	Bracket, Squeegee Lift	1
12	W12301	M8 Washer	14
13	W10860	Steel Cable, 15", Threaded Ends 440mm	1
14	W11072	Joint, Ball	2
15	For Reference	M6Nut	2
16	W12368	Bracket, steel wire	1
17	W11074	Handle, Squeegee lifting	1
18	W11156	Sleeve	1
19	For Reference	M8*30 Bolt, Hex head	1
20	W11076	M8 Nylon Washer	2
21	For Reference	M6Lock Nut	1
22	For Reference	M6spring washer	2
23	For Reference	M6Large washer	2
24	For Reference	M3Lock Nut	4
25	For Reference	M3*25 Round head cross head screw	4
26	W10816-5A	5A overload protection	1
27	W10817	Keyswitch, with 2 keys	1

www.johnson-wholesale.com

USER CONTROL ASSEMBLY 2

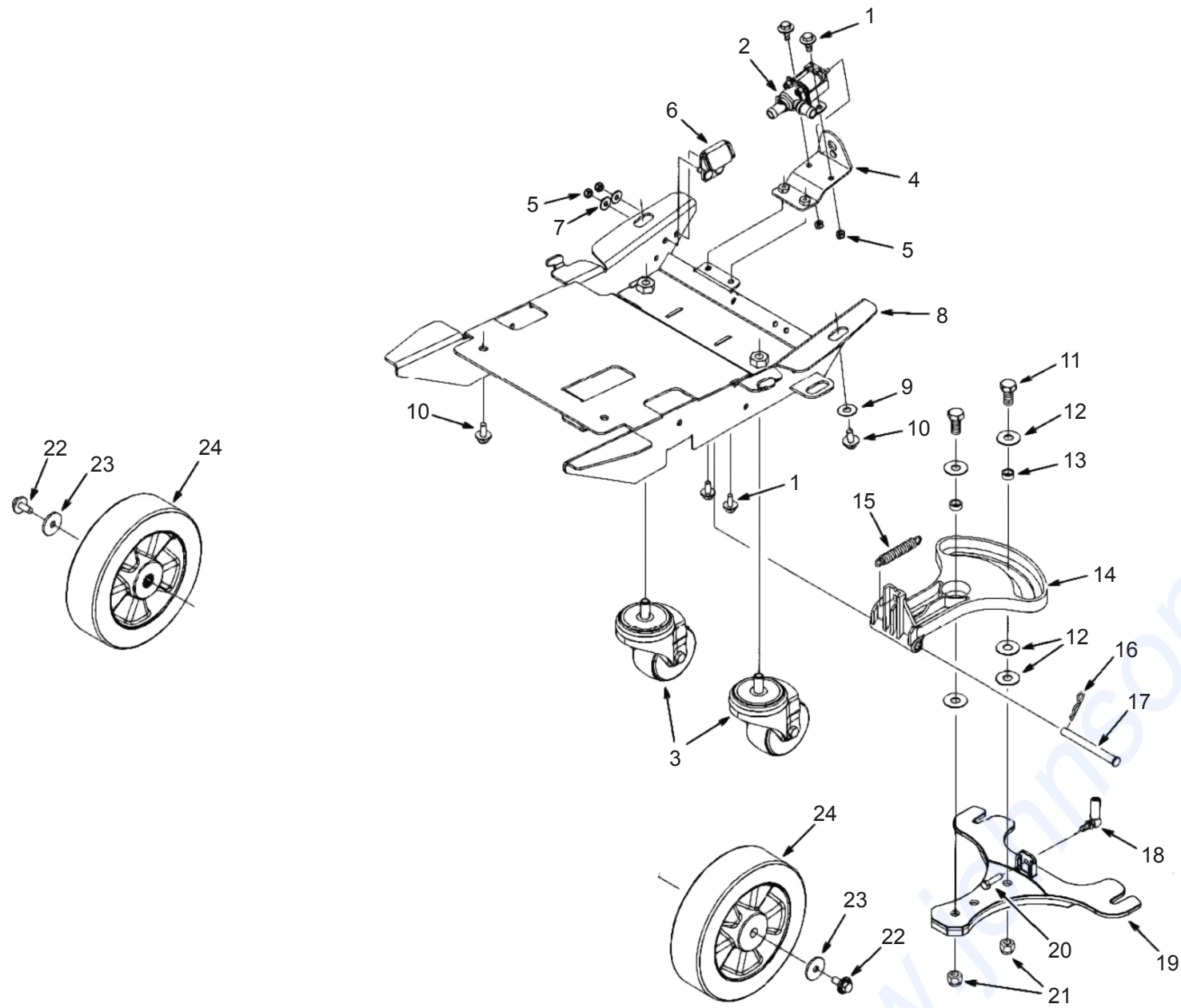


USER CONTROL ASSEMBLY 2

No	Part No.	Description	Qty
1	W12043	M6*20 Bolt, Hex Head	1
2	W13467	Small Relay , 24V30A	1
3	For Reference	Hex Screw, M6	1
4	For Reference	M6 Lock Nut	1
5	W11063	Handle Bracket, DX20	1
6	W13459	Bail Spring, 1.8*18.6*22.5T*77.6H	2
7	W11067	Spring Fixed Bracket	4
8			9
9	W11056	Spring Fixed Bracket 2	1
10	W11068	Micro Switch for Brush/ Bail Switch	1
11	For Reference	M4* 25 Flat Head Cross Screw	6
12	W13468	Transmission Shaft	2
13	W11054	Metal Bail/ Engagement Lever	2
14	W11057	Molded Handle Body, DX20/T	4
14*	W13826	Molded Handle Body, for hand control, DX20/T	4
15	W10823	Hour & Batter Meter	4
16	W11058	User Control Panel, DX20	5
16	W13469	User Control Panel, DX20T	1
17	W11059	User Control Panel Label, DX20	
17	W13470	User Control Panel Label, DX20T	
18	W10840	Toggle Switch	
19	W12325	Green Reverse Button	
20	W13476	Speed Governor	
20	W13475	Speed Governor Knob	
21	For Reference	Pan Head Screw, M4*10	
22	W13471	Controller Bracket, DX20T	
23	W12292	M6 Washer	
24	W12322	Controller, DX20T	
25*	W13825	Micro Switch for Finger Control, DX20	

son-wholesale.com

FRAME ASSEMBLY GROUP

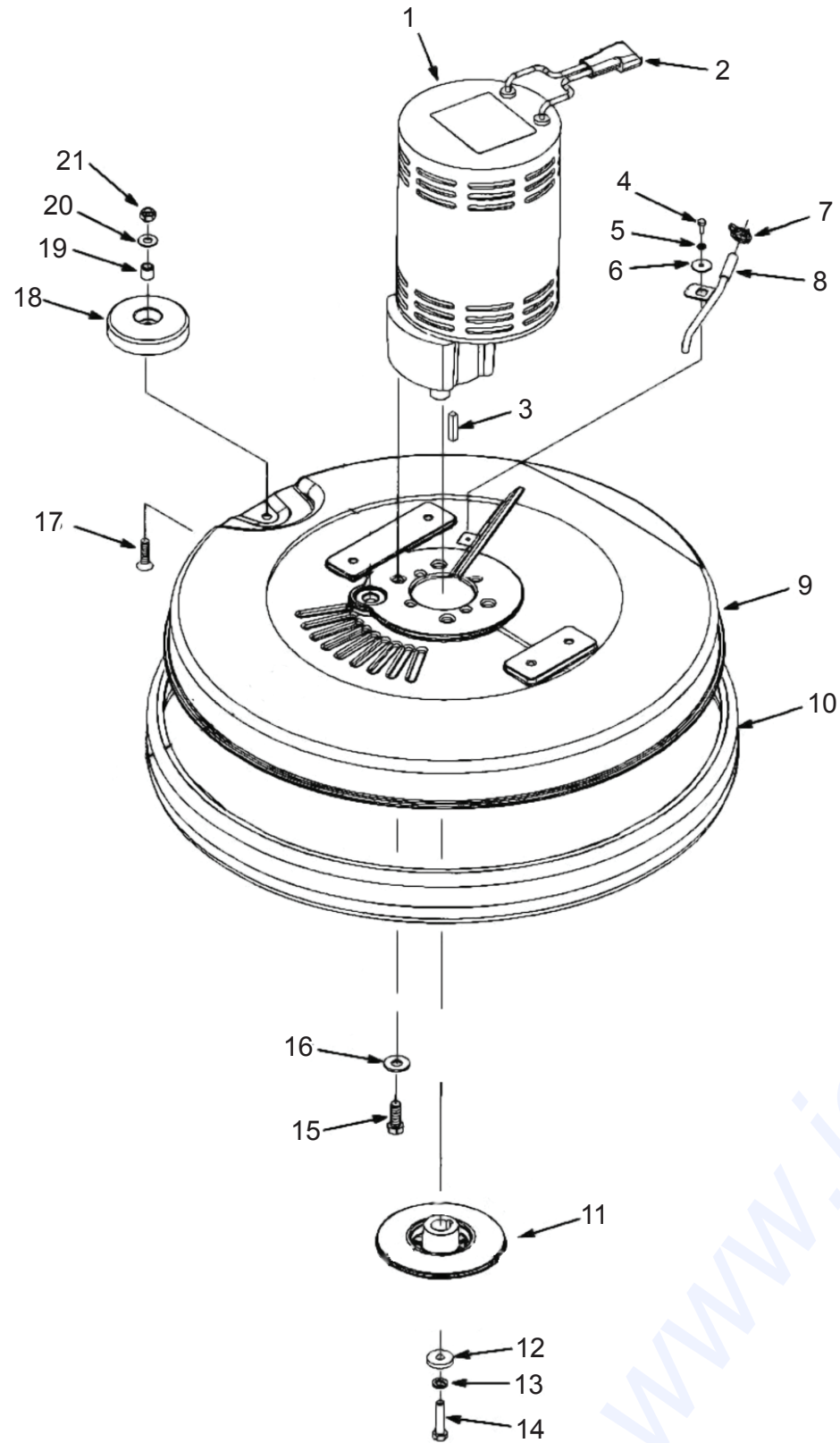


FRAME ASSEMBLY GROUP

No	Part No.	Description	Qty
1	For Reference	Screw, Hex, With Washer, M6×16	4
2	W10818	Valve, Water Shut Off Solenoid	1
3	W10856	Swivel Caster, Machine Base 3"	2
4	W11135	Filler Mount	1
5	For Reference	Nut, M6	4
6	W11079	Locator, Head Lift	1
7	For Reference	Flat Washer, 6mm×14mm×1mm	2
8	W11081	Base Plate, Machine	1
9	W12301	M8 Washer	1
10	W12011	M8*20 Hex Bolt	1
11	For Reference	Screw, Hex, M12×30	1
12	For Reference	Flat Washer, 12mm×27mm×2.5mm	5
13	W11082	Sleeve	2
14	W11083	Bracket, Squeegee Pivot	1
15	W11084	Tension Spring, Squeegee	1
16	W11085	Hairpin Cotter Pin	1
17	W11086	Pin Axle	1
18	W11072	Joint, Ball	1
19	W11087	Bracket, Squeegee Mount	1
20	For Reference	Screw, Hex, M6×12	1
21	For Reference	Nut, Hex, M12	2
22	For Reference	Screw, Hex, M8×20	2
23	For Reference	Flat Washer, 8mm×32mm×2.5mm	2
24	W10855	Wheel, Main 8"	2

www.whipson-whoop.com

HEAD ASSEMBLY GROUP

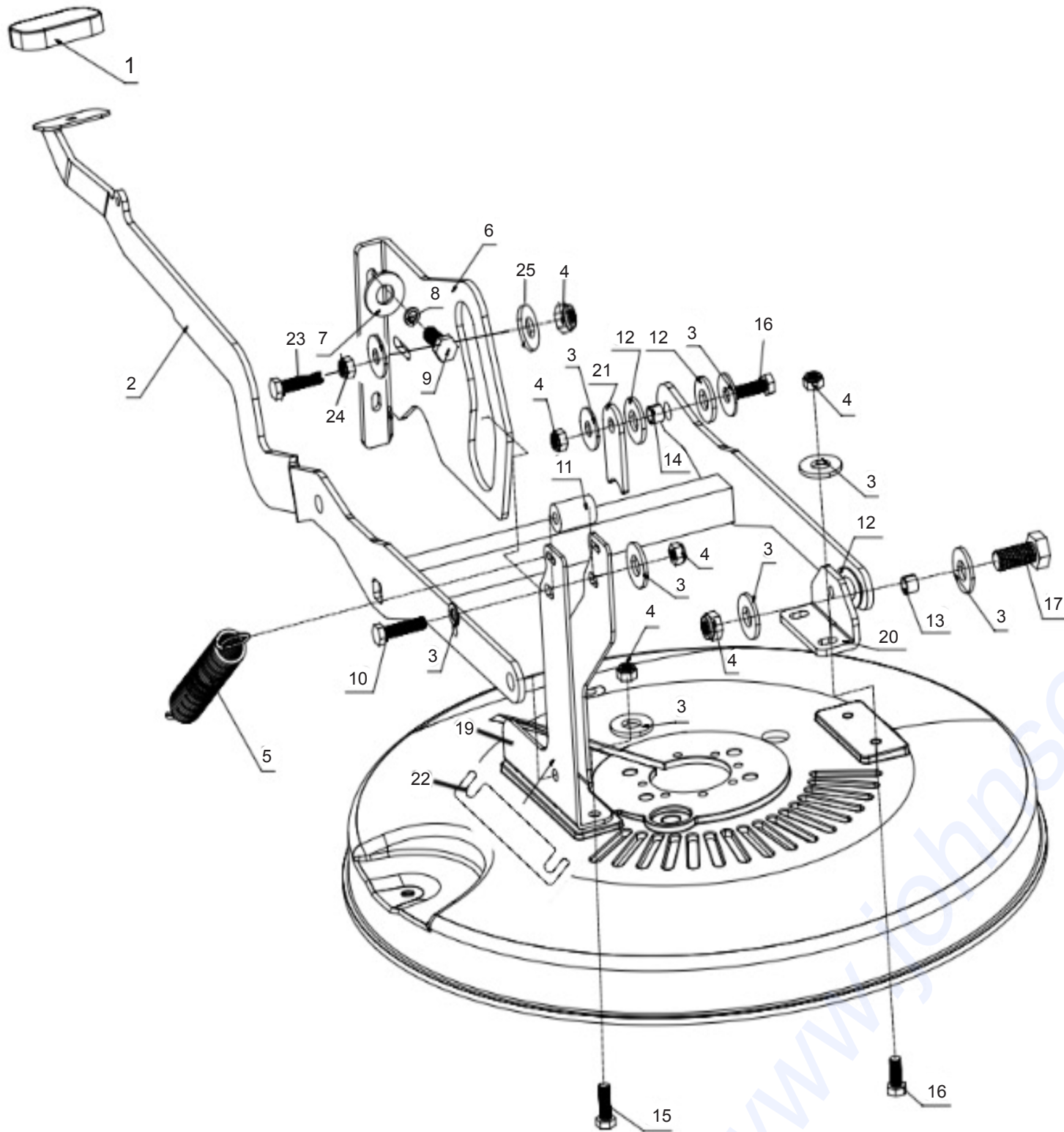


HEAD ASSEMBLY GROUP

No	Part No.	Description	Qty
1A	W11093	Motor, Head	1
1B	W11094	Carbon Brush Kit	1
2	W11096	Small Red Plug, Connector	1
2B	W13266	Gray Plug, Water Proof Connector	1
3	W11097	Machine Key	1
4	For Reference	Screw, Phl, M4×10	1
5	For Reference	Washer, M4	1
6	For Reference	Flat Washer, 4mm×19mm×1mm	1
7	W12235	Hose Clamp	1
8	W11099	Water Pipe	1
9	W11104	Cover, 20" Head	1
10	W10868	Skirt, 20" Head	1
11	W10813	Triangle Driver	1
12	For Reference	Flat Washer, 8mm×25mm×1mm	1
13	W12010	M* Spring Washer	1
14	W12011	M8 Bolt	1
15	For Reference	Screw, 5/16-18*1-3/8	1
16	For Reference	Flat Washer, 8mm×32mm×2.5mm	1
17	For Reference	Screw, M8×30	1
18	W10845	Bumper Wheel	1
19	W11137	Sleeve	1
20	For Reference	Flat Washer, 8mm×25mm×3mm	1
21	W12263	Nut, M8	1

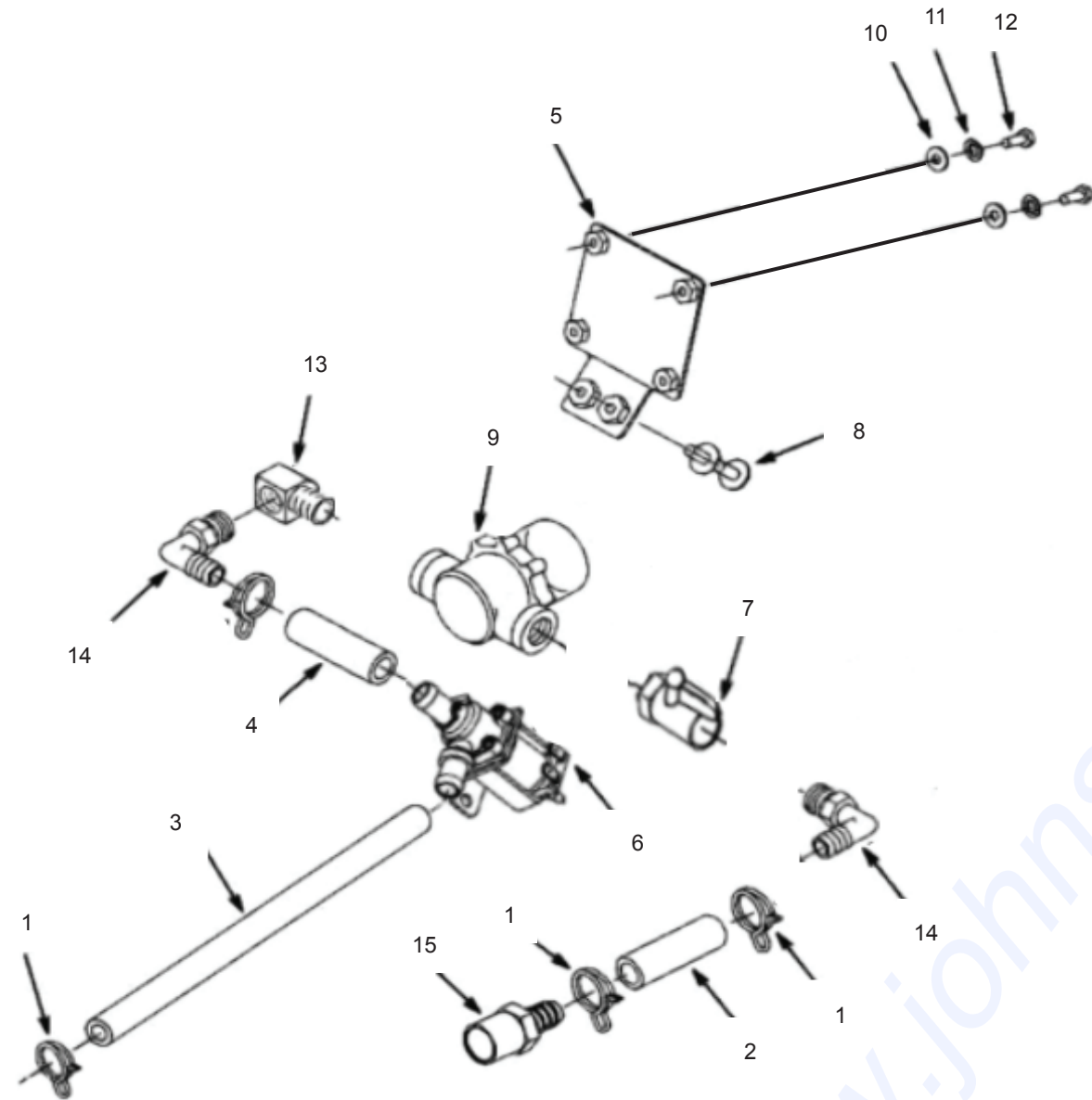
www.johnson-wholesale.com

HEAD LIFTING ASSEMBLY GROUP



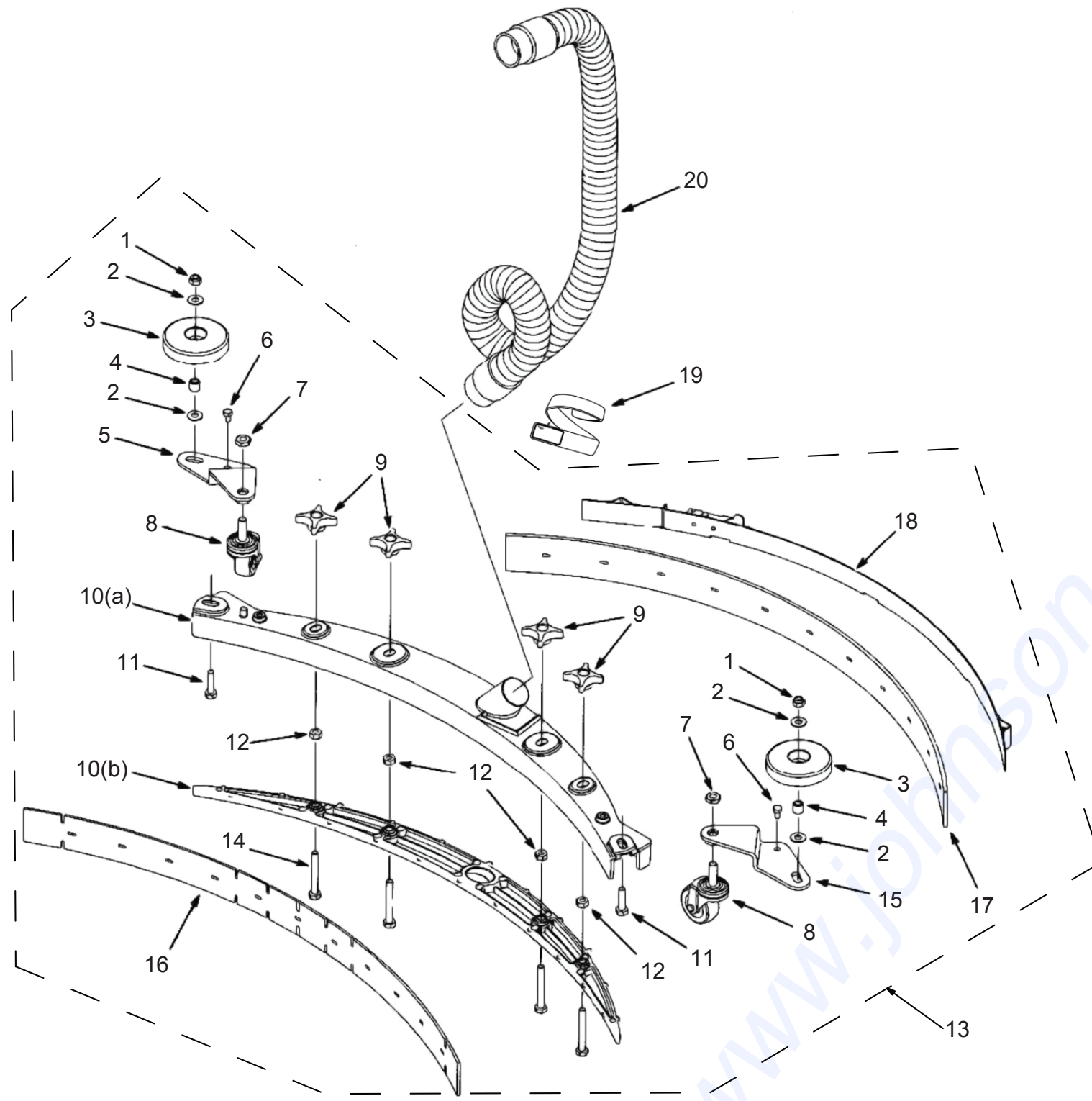
HEAD LIFTING ASSEMBLY GROUP

No	Part No.	Description	Qty
1	W11111	Foot pedal	2
2	W11110	Lever, Head Lift	6
3	W12301	M8 Washer	8
4	W12263	M8 Lock Nut	2
5	W11119	spring2*19*30T*74H	1
6	W13465	Head Lifting bracket 2, DX20T	1
7	For Reference	M6Large washer	1
8	For Reference	M6spring washer	2
9	For Reference	M6*15 Bolt, Hex head	1
10	For Reference	M8*60 Bolt, Hex head	9
11	W11118	Nylon bush12.5*18*37t	4
12	W12300	M8 Nylon washer	2
13	W11082	Sleeve	2
14	W11114	Brass sleeve, 8.5*12*14mm	1
15	For Reference	M8*40Bolt, Hex head	1
16	W12598	M8*35mm Bolt	1
17	For Reference	M8*30Bolt, Hex head	1
18	W12598	M8*35mm Bolt	1
19	W11120	Lifting bracket 3	3
20	W11117	Lifting bracket 4	1
21	W13466	Wheel axle fixing bracket	1
22	W11116	Shim	1
23	W12304	M8*45 Hex Bolt	1
24	For Reference	M8 NUT	1
25	For Reference	M8 Washer	1



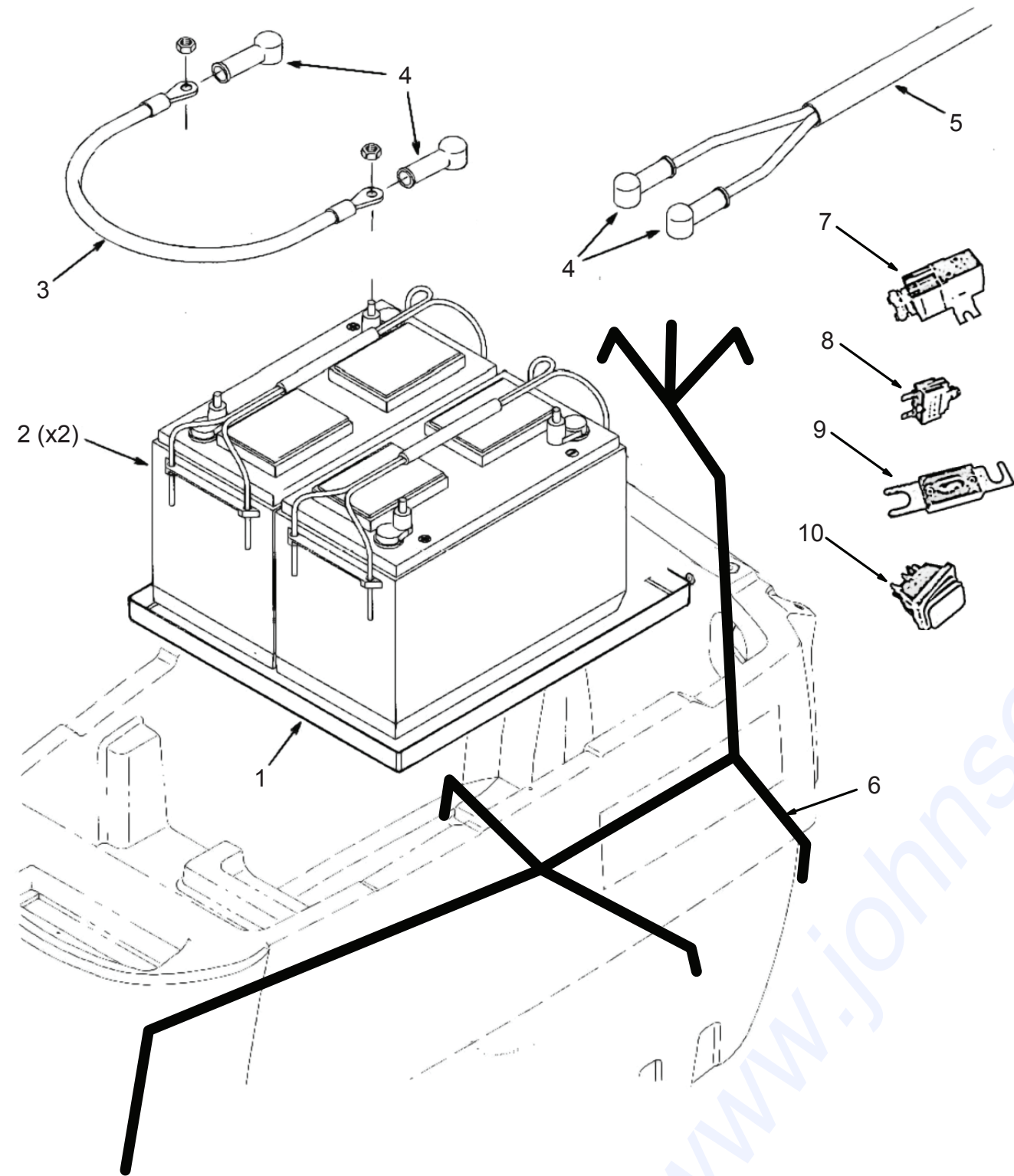
No	Part No.	Description	Qty
1	W12235	Hose Clamp	3
2	W10984	13mm Hose, 4in Long	1
3	W10984	13mm Hose, 22in Long	1
4	W10984	13mm Hose, 3in Long	1
5	W11135	Mounting Bracket, Valve	1
6	W10818	Valve, Water Shut Off Solenoid	1
7	W12335	Quarter Turn Ball Valve, 3/8"	1
8	For Reference	Screw, Hex, M6×12	2
9	W10869	Inline Water Filter Assembly	1
10	For Reference	Flat Washer M5	2
11	For Reference	Lock Washer M5	2
12	For Reference	Screw, Phi, M5×12	2
13	W11129	Elbow, 3/8" MNPT x 3/8 FNPT	1
14	W11130	Elbow, 3/8" MNPT x 3/8 Barb	1
15	W11132	Plastic Adapter, 3/8" MNPT x 3/8 Barb	1

www.johnson-wholesale.com



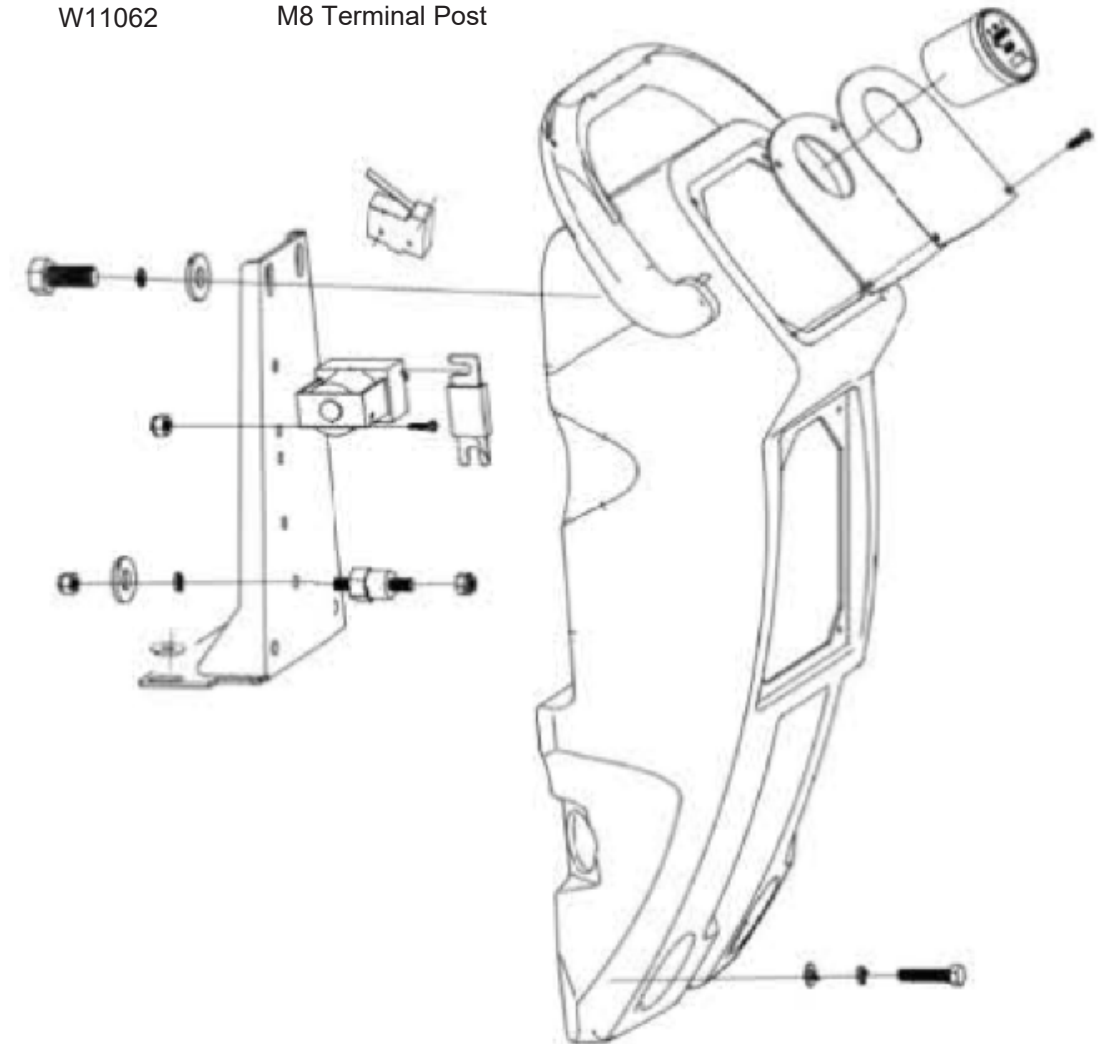
No	Part No.	Description	Qty
1	W12263	Nut, M8	1
2	For Reference	Flat Washer, 8mm×25mm×3mm	2
3	W10845	Bumper Wheel	1
4	W11137	Sleeve	1
5	W11138	Metal Plate, Fixing Squeegee, Left	1
6	For Reference	Screw, Hex, With Washer, M6×16	1
7	For Reference	Nut, Hex, M10	1
8	W10870	Swivel Caster, Squeegee	1
9	W10985	Wing Nut Knob, Star	1
10A	W11140	Squeegee Main Body	1
10B	W12319	Squeegee Lower Body	1
11	For Reference	Screw, Hex, M8×30	1
12	For Reference	Nut, Hex, M8	4
13	W10889	Squeegee Assembly	1
14	For Reference	Screw, Hex, M8×55	2
15	W11142	Metal Plate, Fixing Squeegee, Right	1
16	W10863	Squeegee Blade - Front 32"	1
17	W10864	Squeegee Blade - Rear 32"	1
18	W11143	Squeegee Tightening Clamp Assy	1
19	W10590	Velcro Cinch Strap - 1x12 in.	1
20	W10866	Vacuum Hose, Recovery Tank	1

ELECTRICAL COMPONENTS



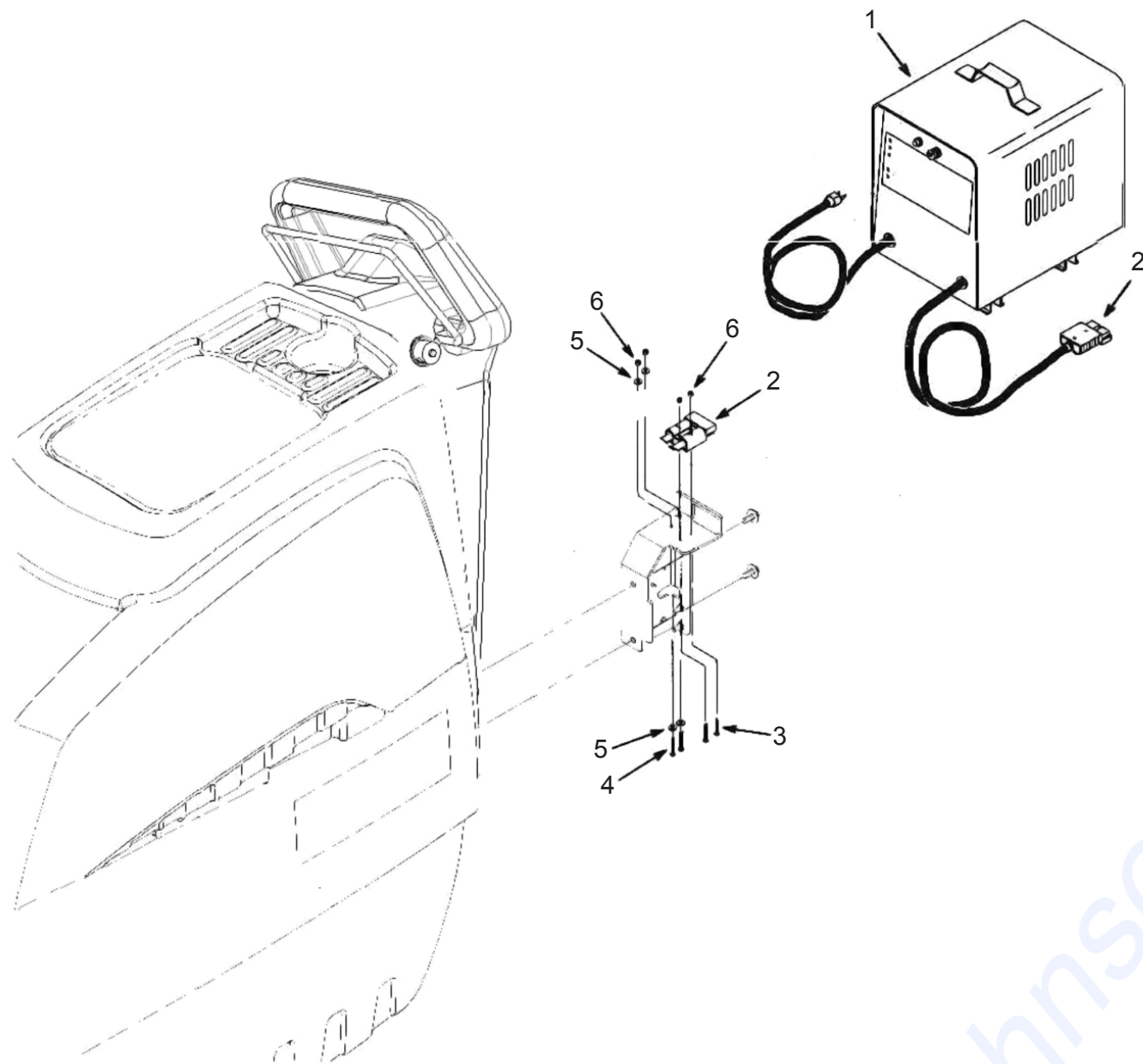
ELECTRICAL COMPONENTS

No	Part No.	Description	Qty
1	W11144	Tray, Battery	1
2	W10890	Battery - 12V	2
3	W11145	Cable, Battery Series Connection	1
4	W11146	Boot	4
5	W11147	Cable, Battery Charge	1
6	W11163	Complete Wiring Harness, DX20	1
6	W14071	Complete Wiring Harness, DX20T	1
7	W10815	24V Relay / Contactor	1
8	W10816-5A	Circuit Breaker, 5A	1
8	W10816-10A	Circuit Breaker, 10A	1
8	W10816-20A	Circuit Breaker, 20A	1
8	W12356	Circuit Breaker, 40A	1
9	W10819-80A	Fuse, 80A	1
9	W10819-150A	Fuse, 150A	1
10	W10840	Toggle Switch	1
11	W11062	M8 Terminal Post	1

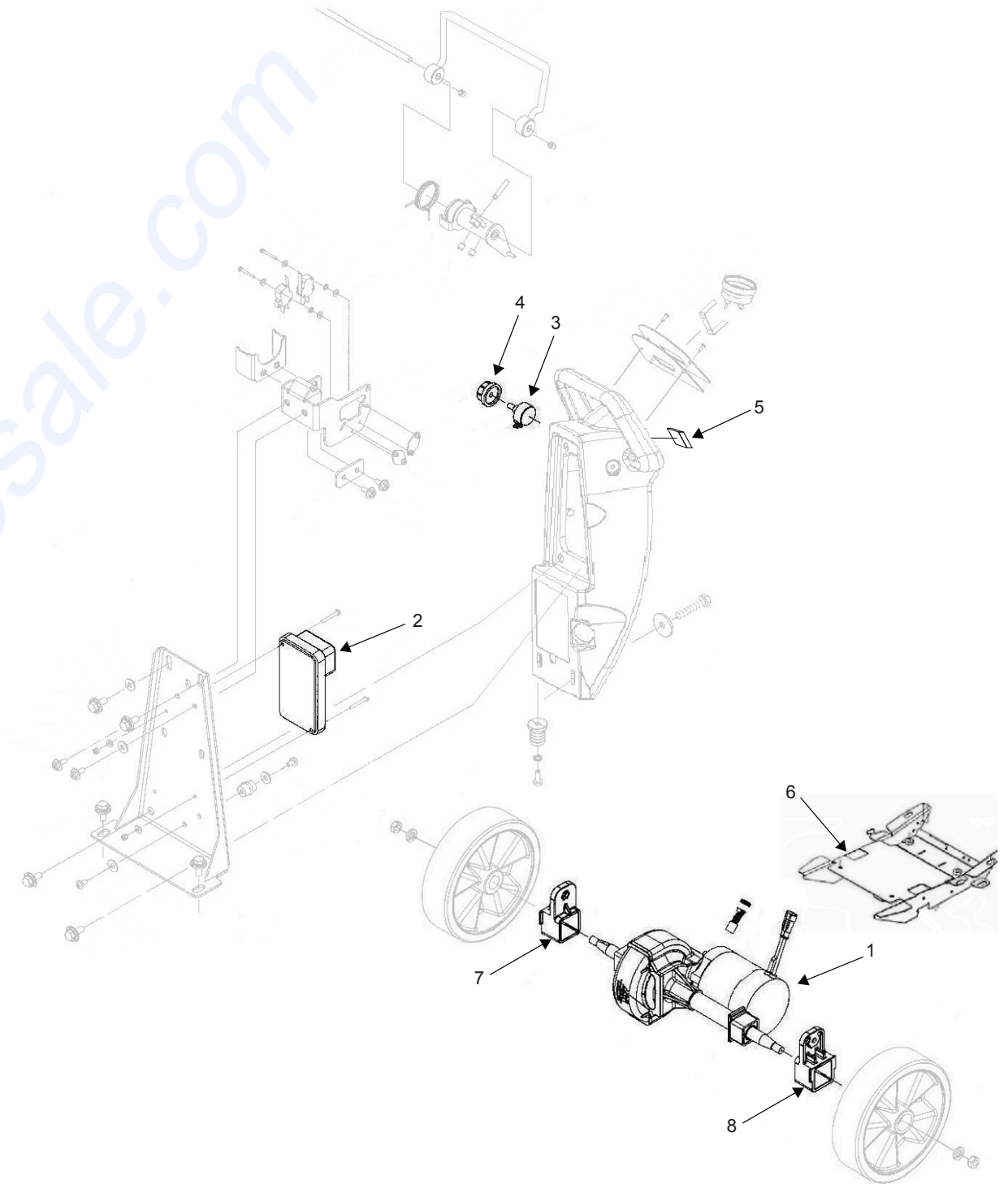


CHARGING SYSTEM

ADDITIONAL PARTS DX20T

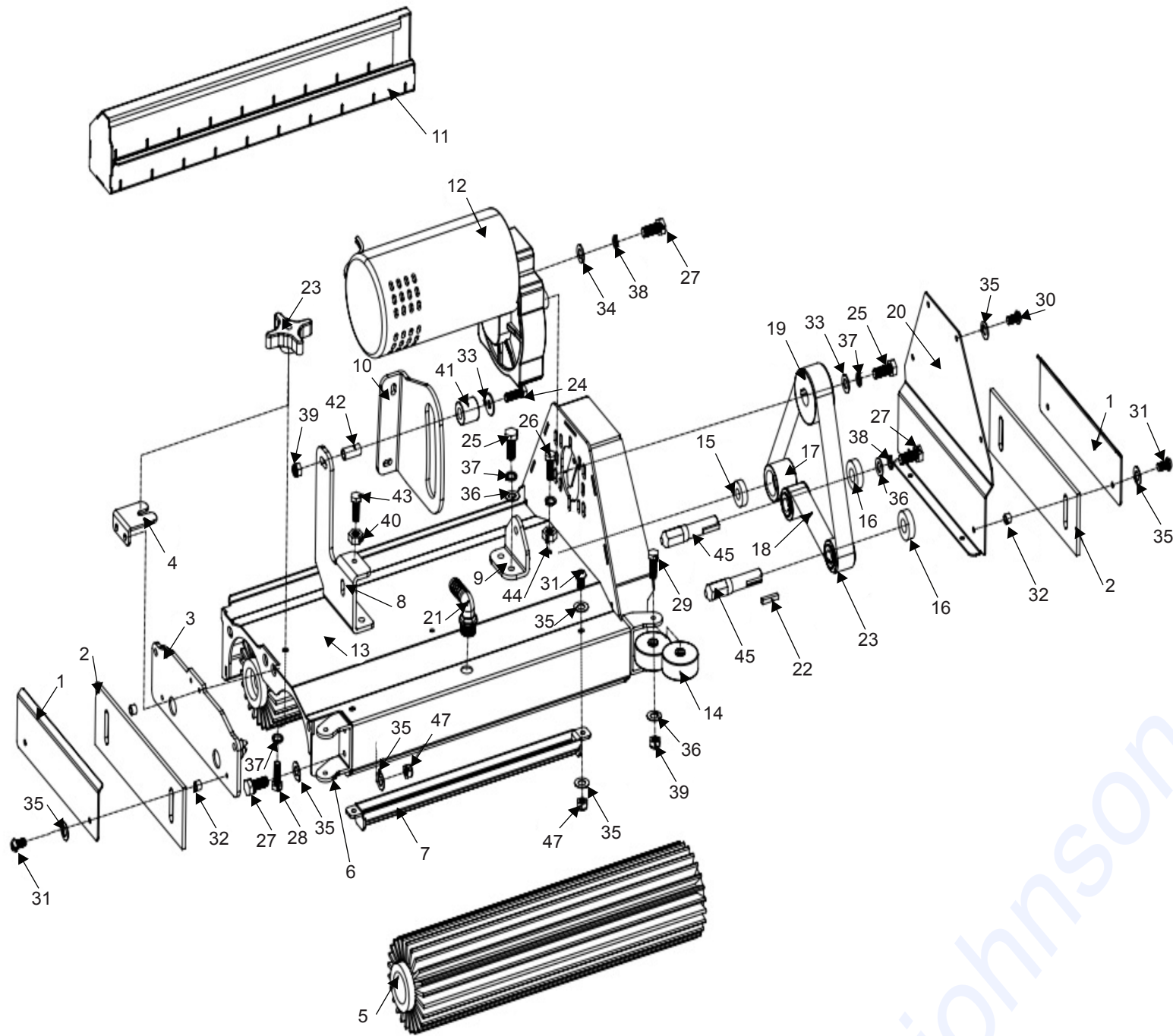


No	Part No.	Description	Qty
1	QXC04V15	Battery Charger	1
2	W10858	Charger Socket Housing	2
3	For Reference	Screw, M4×30	2
4	For Reference	Screw, M4×20	2
5	For Reference	Washer, M4	4
6	For Reference	Nut, M4	4



No	Part No.	Description	Qty
1	W12321	Driving Motor	1
2	W12322	Control Box	1
3	W12323	Speed Governor	1
4	W12324	Knob, speed adjusting	1
5	W12325	Reverse Switch	1
6	W13472	Base Frame for DX20T	1
7	W13473	A3D Drive Motor Fixing Iron	1
8	W13558	A3D Drive Motor Fixing Iron-2	1

DX20C CYLINDRICAL



No	Part No.	Description	Qty
1	W13533	Fixed part of water blocking rubber strip-1	2
2	W13250	Side Squeeze Blade, DX20C	2
3	W13535	Fixed part of water blocking rubber strip-2	1
4	W13536	Fixed part of water blocking rubber strip-3	1
5	W13245	Cylindrical Brush, DX20C	2
6	W13538	M12 anti-collision wheel bracket	2
7	W13539	M12 drip bracket	1
8	W13540	Rolling brush fixing bracket -1	1
9	W13541t	Rolling brush fixing bracket -2	1

DX20C CYLINDRICAL

No	Part No.	Description	Qty
10	W13542	Rolling brush fixing bracket -3	1
11	W13543	M12 garbage bin	1
12	W13835	Brush disk motor, DX20C	1
13	W13545	M12 rolling brush frame main body	1
14	W13546	M12 anti-collision wheel	4
15	W13254	Bearing 6002	4
16	W13548	Bearing 6001	2
17	W13249	Cylindrical Brush Pully, DX20C	1
18	W13253	Cylindrical Machine Drive Bleat, DX20C	1
19	W13551	Belt pulley M12 (large)	1
20	W13552	Fixed part of water blocking rubber strip-4	1
21	W11130	3/8 elbow, plastic, 14mm outer	1
22	W13553	M12 ejector pin	2
23	W13554	Belt pulley M12-1 (small)	1
24	W12598	Bolt, Hex head M8*35	1
25	W12011	Bolt, Hex head M8*20	5
26	For Reference	Bolt, Hex head M8*30	1
27	For Reference	Bolt, Hex head M6*15	11
28	W12598	Bolt, Hex head M8*35	1
29	For Reference	Bolt, Hex head M8*40	1
30	For Reference	Button Head Socket Cap ScrewM6*10	6
31	W13531	Button Head Socket Cap ScrewM6*20	4
32	For Reference	Brass sleeve 6*10*7mm	4
33	W12301	M8 Large washer M8	2
34	For Reference	M8 Large washer M6	7
35	W12292	M6 Washer	12
36	W12292	M6 Washer	9
37	W11076	M8 Washer	1
38	For Reference	M6 spring washer	10
39	W12263	M8 Lock Nut	2
40	For Reference	M6NUT	1
41	W13455	Nylon bush 12*25*24mm	1
42	W13456	Brass sleeve 8*12*25mm	1
43	For Reference	Bolt, Hex head M6*30	1
44	For Reference	M8 NUT	1
45	W13246	M12 long thimble	2
46	W13457	Belt pulley M12-2(small)	1
47	For Reference	M6Lock Nut	6

www.johnson-wholesale.com

www.johnson-wholesale.com

ONYX

TECHNOLOGY POWERING A CLEANER FUTURE

12605 Commerce Station Dr • Suite 700

Huntersville, NC 28078

704.827.9368



onyxsolutions.com