



Commercial Matting Systems

3-Mat Systems

Outdoor Mats

Indoor Mats

Logo & Specialty Mats

Ergonomic Mats

828-283-1999



PRODUCT
CATALOG

www.CrownMats.com



Outdoor
Mats
Page 6

3-Mat
System
Page 2

Indoor
Mats
Page 10

Ergonomic
Mats
Page 24

Logo /
Specialty Mats
Page 18

Slip-Resistant
Mats
Page 31

CONTENTS

PRODUCT NAME ITEM# PAGE

3-Mat System

Cambridge™	275	4
Oxford™ Elite	265	4
Oxford™	360	4
Fore-Runner™	155	5
Cross-Over™	255	5
Walk-A-Way™	355	5

Outdoor Mats

Boardwalk™	170/171	7
Commercial Clean Machine®	110	7
Diamond-Deluxe™ Duet	125/126	8
Mat-A-Dor™	100	8
Spaghetti Mat™	130/131	9
Crown-Tred™	145	9

Indoor Mats

Dura-Dot™	202	11
Marathon™	228	11
Tire-Track™	225	12
EcoPlus™	270/271	12
Grounds-Keeper™	300	13
Skyline	365	13
Needle-Pin®	240	14
Chevron™	230	14
Dust-Star™	350	15
Wonder-Pro™	310	15
Needle-Rib™	235	16
Eco-Step™	345	16
Rely-On Olefin™	315	16
Super-Soaker™	250/251	17
Super-Soaker™ Diamond	261/262	17
Super-Soaker™ Fan	252/253/254	17

Logo/Specialty Mats

Graphic Inlay	020/021/022/025	19
Flocked Mat	010	20
Embossed Anti-Fatigue Mat	050	20
HD Jet-Print™, Jet-Print™	035/021	21
Crown-Tred™ Printed	040	21
Stat-Zap® Carpet Top	900	22
Walk-N-Clean™	995	22
Disinfectant Boot Bath	102	22
Chair Mats	990	22
Accessories		23
Rug-Hugger™ Backing		23
Mat-Lock™ Backing		23
Velcro® Backing Strips		23
Nosing		23
Tack-Tape™		23

Ergonomic Mats

Workers-Delight™ Slate	546/556	25
Workers-Delight™ Supreme	541	25
Workers-Delight™ Traction Plus	543/553	26
Workers-Delight™ Deck Plate	540/550	26
Wear-Bond™ Comfort-King™	560/562	27
Alleviator™ Comfort-King™	465	27
Comfort-King™	440/445	28
Para-Mount™	649	28
Safety-Step™ Solid-Top	685	29
Yoga-Flex®	695	29
Wear-Bond™ Tuff-Spun®	520/522	30
Tuff-Spun® Foot-Lover™	410/411/430/431	30
Safety-Step™ Perforated	680/681	31
Safewalk-Light™	645/646	31
Sani-Tred™	667	31
Runners		32
Pro-Tekt™	820	32
Deck Plate	850	32
Sta-Kleen™	800	32
Corrugated Rubber	840	32
Gym-Dandy™	871	32
Care & Maintenance, Warranty		33

Crown Matting Technologies, located in Fremont, Ohio, has been setting the pace in commercial matting, using proprietary innovative technologies to further our products and provide incomparable value to the industry for over 70 years.

From front door to back, and every step in between, Crown brings forward comprehensive matting solutions by offering the most diverse selection of matting in the industry, while continuing to lead in the area of custom cut matting solutions.

Crown Matting Technologies has been fortunate to serve a generation of business owners and public institutions, helping maintain and improve both the appearance and safety of buildings worldwide. We're honored to have done so. We look forward to continuing to bring forward innovative and comprehensive matting solutions for generations to come ... one mat at a time.



Working hard for the hard working.™

On cover: Cambridge™ (outside) p. 4
Oxford™ Elite (middle) p. 4
Oxford™ (inside) p. 4



Total Confidence Warranty means we stand behind this product for the life of the product. See our website for complete details.



Exclusive ThermoFlex™ Technology offers increased durability and allows for custom width of up to 11'9".



Look for LOGO icon throughout this catalog to know which matting products are a part of our custom logo program.



Our patented Zedlan™ Foam outwears and outperforms standard foam by nearly 3 to 1.



Exclusive technology that permanently bonds two surfaces without use of glues or adhesives.



Our Slip-Resistant icon indicates foam products coated with our unique slip-resistant formulation to provide additional safety benefits.



The D.I.N.P. Free icon indicates products that comply with the State of California's Proposition 65 regulations.

3-Mat System

1 Scraper

- Scrapes Heavy Debris
- Your first defense against mud, dirt, and snow
- Choose matting with a non-absorbent scraping surface, or open weave backing, to allow moisture to drain naturally

1

2 Scraper/Wiper

- Cleans & Absorbs Moisture
- The workhorse of the system
- Designed to remove and contain soil, waste particles and moisture at the entrance

2

3 Wiper

- Absorbs Moisture & Dries
- Removes remaining moisture, fine fragments and dust from footwear upon entrance to the interior of building

3

EXIT

Cambridge™ (outside) p. 4
Oxford™ Elite (middle) p. 4
Oxford™ (foreground) p. 4

THE REAL DIRT

Amount of dirt in a building that is tracked in on feet... **80%**

The estimated cost of removing a single pound of dirt from a modern building **\$600**

The amount of dirt 1,000 people can track into a building in just 20 days? **24lbs**

\$1 spent keeping soil out of a building will save **\$10** in removing the soil once it's inside.

Entrance matting should cover **15 to 18 feet** of an entrance, preventing **80-90%** of dirt from coming into the facility.

3 MAT SYSTEM

#275 Cambridge™

SCRAPER | HEAVY TRAFFIC

New!

FEATURES

- Innovated Polyamide Nylon 6 monofilament and Nylon 6,6 fibers provide one of the most aggressive scraping technologies in the industry, trapping dirt before it infiltrates the building
- Rubber backing provides increased durability in mild to severe environments

SPECIFICATIONS

Standard Sizes: 2' x 3' 3' x 5' 3' x 10' 4' x 6'
(Trade sizes, see actual specs in price list)

Finish: Rubber backing/borders

Thickness: 3/16"

WARRANTY

Total Confidence



#155 Fore-Runner™

SCRAPER | MEDIUM TRAFFIC

FEATURES

- Attractive two-tone colors and resilient construction resist fading
- Non-absorbent, abrasive surface scrapes soil and debris from footwear
- ThermoFlex™ vinyl backing offers superior floor protection

SPECIFICATIONS

Standard Sizes: 2' x 3' 3' x 4' 3' x 5'
3' x 10' 4' x 6' 4' x 10'

Rolls: 3' x 60' 4' x 60' 6' x 60'

Total Customization: Up to 11'9" x 60'

Finish: ThermoFlex™ vinyl backing/borders

Thickness: 5/16"

WARRANTY

Total Confidence



#265 Oxford™ Elite

SCRAPER / WIPER | HEAVY TRAFFIC

FEATURES

- Mix of abrasive and sturdy olefin fibers for well balanced wiping and scraping performance
- Heavyweight attractive surface hides dirt and keeps entrance clean
- ThermoFlex™ vinyl backing offers superior floor protection

SPECIFICATIONS

Standard Sizes: 2' x 3' 3' x 4' 3' x 5'
3' x 10' 4' x 6' 4' x 10'

Rolls: 3' x 60' 4' x 60' 6' x 60'

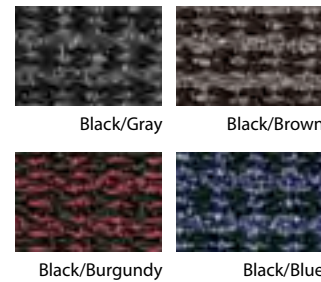
Total Customization: Up to 11'9" x 60'

Finish: ThermoFlex™ vinyl backing/borders

Thickness: 3/8"

WARRANTY

Total Confidence



#255 Cross-Over™

SCRAPER / WIPER | MEDIUM TRAFFIC

FEATURES

- Attractive two-tone colors and resilient construction resist fading and crushing
- Abrasive loop-pile surface scrapes debris and moisture from footwear while sturdy olefin fibers start the drying process
- Step #2 of our complete three-mat system used in combination with our Fore-Runner™ scraper and Walk-A-Way™ wiper

SPECIFICATIONS

Standard Sizes: 2' x 3' 3' x 4' 3' x 5'
3' x 10' 4' x 6' 4' x 10'

Rolls: 3' x 60' 4' x 60' 6' x 60'

Total Customization: Up to 11'9" x 60'

Finish: ThermoFlex™ vinyl backing/borders

Thickness: 5/16"

WARRANTY

Total Confidence



#360 Oxford™

WIPER | HEAVY TRAFFIC

FEATURES

- Heavyweight loop pile mat that exceeds the performance of similar wipers in the market
- High performance mat that will retain water and minimize the risk of slips and falls
- Attractive pattern hides dirt and keeps your entrance clean

SPECIFICATIONS

Standard Sizes: 2' x 3' 3' x 4' 3' x 5'
3' x 10' 4' x 6' 4' x 10'

Rolls: 3' x 60' 4' x 60' 6' x 60'

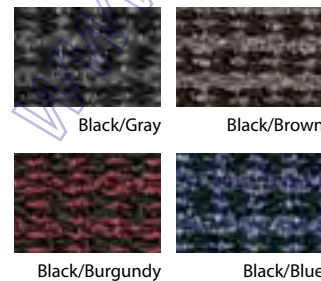
Total Customization: Up to 11'9" x 60'

Finish: ThermoFlex™ vinyl backing/borders

Thickness: 3/8"

WARRANTY

Total Confidence



#355 Walk-A-Way™

WIPER | MEDIUM TRAFFIC

FEATURES

- Attractive two-tone colors and resilient construction resist fading and crushing
- Dense, fast drying loop-pile fibers absorb heavy moisture and trap fine dirt particles
- Step #3 of our complete three-mat system used in combination with our Fore-Runner™ scraper and Cross-Over™ scraper/wiper mats

SPECIFICATIONS

Standard Sizes: 2' x 3' 3' x 4' 3' x 5'
3' x 10' 4' x 6' 4' x 10'

Rolls: 3' x 60' 4' x 60' 6' x 60'

Total Customization: Up to 11'9" x 60'

Finish: ThermoFlex™ vinyl backing/borders

Thickness: 5/16"

WARRANTY

Total Confidence



Outdoor Matting

Dirt that is brought in on shoes can cause premature and visible wear and tear on expensive interior flooring — both hard surfaced and carpeted floors.

In addition, a lack of correct entry matting affects indoor air quality. An outdoor mat is there to knock off the big stuff and begin the dirt management process.

What to look for:

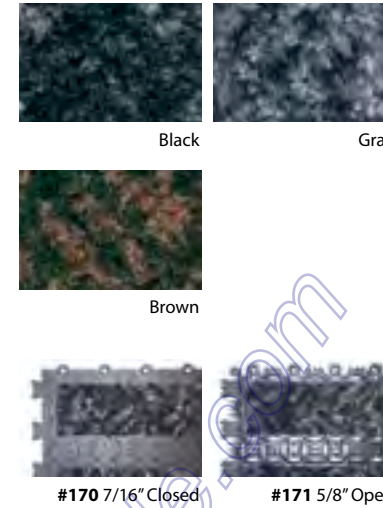
- Choose an aggressive mat with a surface designed and built for vigorous scraping.
- Quality outdoor mats can trap and hold as much as three pounds of dirt per square foot. Mats with this ability can actually reduce overall building cleaning costs
- Deep pile products hide dirt and prevent it from entering the building
- Consider choosing colors that efficiently conceal dirt, sand, salt, etc.



Fore-Runner™ p. 5

#170/171 Boardwalk™

SCRAPER/WIPER | HEAVY TRAFFIC



#171 5/8" Open

FEATURES

- Highly functional tile matting offers superior performance provided by the unique modular construction
- The closed construction of the 7/16" (#170) allows for easy maintenance and is ideal for shallow matwells
- The open construction of the 5/8" (#171) allows for efficient drainage and removal of dirt and moisture

SPECIFICATIONS

Standard Sizes: 7.68" x 7.68"
60 tiles (24.6 sq. ft.) per box

Finish: UV Resistant PVC

Thickness: #170 – 7/16"
#171 – 5/8"

WARRANTY

Total Confidence

New!



#110 Commercial Clean Machine®

SCRAPER | HEAVY TRAFFIC



5/8" Thick

FEATURES

- Molded polyethylene blades resist crushing, mildew and fading
- Improved skid-resistant backing withstands low temperatures
- Deep pile hides dirt out of sight and prevents it from entering the building

SPECIFICATIONS

Standard Sizes: 3' x 4' 3' x 5' 3' x 6'
3' x 8' 4' x 6'* 6' x 8'*

Rolls: 3' x 25'*** 3' x 50'***

*Products more than 3' wide have a seam in the middle.

**Rolls do not have beveled nosing.

Heavy-duty beveled nosing recommended to prevent tripping.

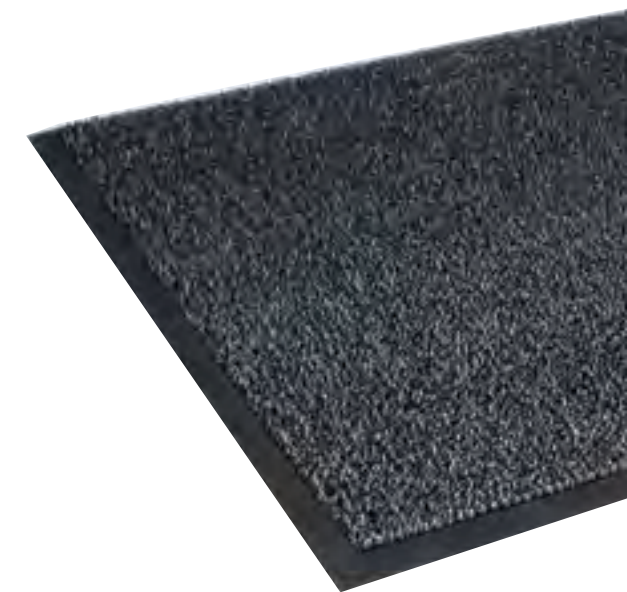
Total Customization: Length/width cuts up to 3' x 50' and up to 6' x 15'

Finish: Anti-skid polyethylene embossed film

Thickness: 5/8"

WARRANTY

Total Confidence



#125/126 Diamond-Deluxe™ Duet

SCRAPER | MEDIUM TRAFFIC

FEATURES

- Beautiful two-tone vinyl loop mat provides a stylish, yet effective, scraper mat
- Distinctive embossed diamond pattern hides debris beneath the loops
- Also available without backing to facilitate the flow of water (ideal for locker rooms, pools, spas, etc.)

SPECIFICATIONS

Standard Sizes: 3'x5' 4'x6'
(edging/nosing available)

Rolls: 3'x20' 4'x20' *(No borders)*

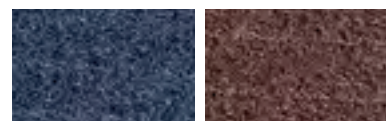
Total Customization: Up to 8' wide

Finish:

- #125: with foam backing (1/2"), ideal for indoor usage
- #126: unbacked drain-through (3/8")

WARRANTY

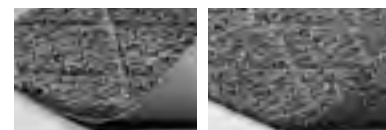
Total Confidence



Blue/Black Brown/Caramel



Gray/Black



#125: with foam backing (1/2") #126: unbacked with drain-through (3/8")



1/2" Thick

#130/131 Spaghetti Mat™

SCRAPER | LIGHT TRAFFIC

FEATURES

- PVC loop structure with vinyl backing
- Dries quickly, resists mildew and fading
- Also available without backing to facilitate the flow of water

SPECIFICATIONS

Standard Sizes: 3' x 5' 4' x 6'
(offered with or without crimped or applied vinyl nosing)

Rolls: 3' x 20' 4' x 20' *(No borders)*

Total Customization: Up to 4' wide

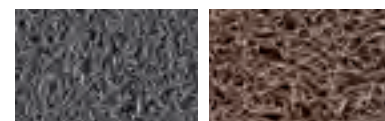
Finish:

- #130: with backing
- #131: unbacked

Thickness: 3/8"

WARRANTY

1 Year



Gray Brown



#130: with backing #131: unbacked



3/8" Thick

#100 Mat-A-Dor™

SCRAPER | MEDIUM TRAFFIC

FEATURES

- Remains flexible and maintains performance in the coldest temperatures
- Contains 60% more "fingers" than standard fingertip mats, for outstanding scraping action
- Beveled edge reservoir retains up to 1 gallon of liquid per square yard

SPECIFICATIONS

Standard Sizes: 24" X 32" 32" X 39" 36" X 72"

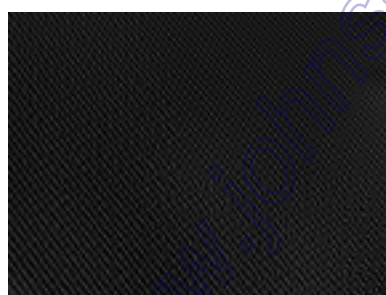
Total Customization: Unavailable

Finish: Rubber corrugated back and molded edging

Thickness: 5/8"

WARRANTY

5 Year on finger breakage



Black Rubber mat with corrugated back and molded edging



5/8" Thick

#145 Crown-Tred™

SCRAPER | LIGHT TRAFFIC

FEATURES

- Rubber made to withstand any outside weather usage
- Affordable solution for small commercial location
- Raised pattern scrapes debris off of shoes

SPECIFICATIONS

Standard Sizes: 3' x 5' 3' x 10' 4' x 6'
(Trade sizes, see actual specs in price list)

Rolls: Unavailable

Total Customization: Unavailable

Finish: Beveled rubber borders

Thickness: 1/4"

WARRANTY

1 Year



Black

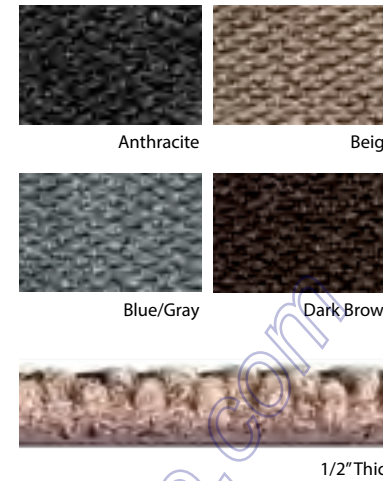
Indoor Matting Solutions

Scraper/Wiper mats are often viewed as the best overall matting available. Ideally used to transition between rugged external matting and internal finishing mats, they scrape off light soils and absorb and retain water and moisture. Scraper/Wipers are often used for internal entryways – between external and internal doors, or as the first of two internal entry mats.

Wiper mats or “finishing” mats are best thought of as the final step in managing dirt and debris at the point of entry. The surface fibers pull off lingering dirt and dust, while absorbing and retaining water and wetness. Preventing the moisture from getting onto floors keeps them dry and safe. Wiper mats are also often used to support cleanliness throughout the building, such as outside of restrooms or kitchen and cafeteria entrances.



#228 Marathon™ SCRAPER / WIPER | HEAVY TRAFFIC



FEATURES

- Heavy-duty needlepunch surface for outstanding scraping and water retention
- Reinforced latex-coated pattern allows for increased dirt and moisture removal
- ThermoFlex™ vinyl backing offers extreme durability and superior floor protection

SPECIFICATIONS

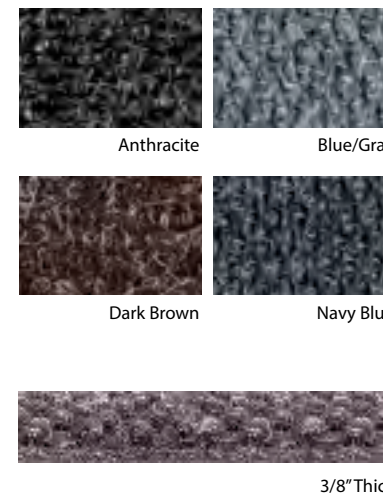
Standard Sizes: 2' x 3' 3' x 4' 3' x 5'
3' x 10' 4' x 6' 4' x 10'
Rolls: 3' x 60' 4' x 60' 6' x 60'
Total Customization: Up to 11'9" x 60'
Finish: ThermoFlex™ vinyl backing/borders
Thickness: 1/2"

WARRANTY

Total Confidence



#202 Dura-Dot™ SCRAPER / WIPER | HEAVY TRAFFIC



FEATURES

- Stain UV and abrasion resistant berber surface for high-performance applications
- Anti-skid and moisture resistant gel foam backing
- Can also be used outdoors, under cover (not recommended for applications where storage, rolling and unrolling is required)

SPECIFICATIONS

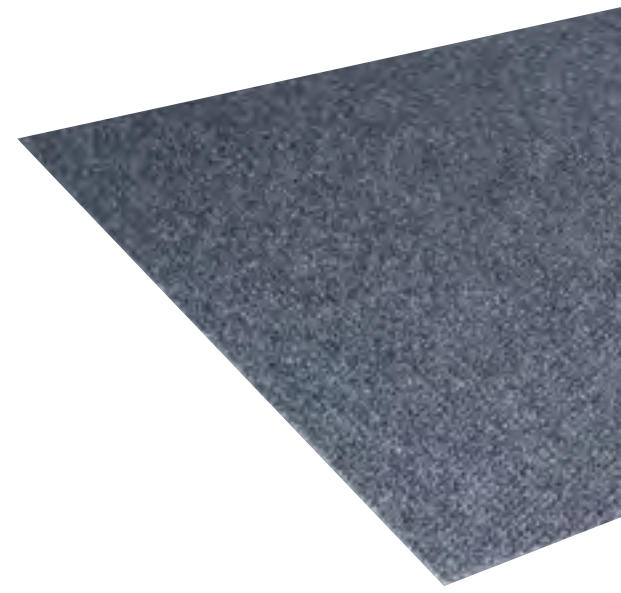
Standard Sizes: 3'3" x 5'3" 3'3" x 10'3"
4'3" x 6'3"
(Mats have sewn and glued picture frame nosing)
Rolls: 3' x 82' 4' x 82' 6' x 82'
3'3" (1m) x 82' 6'7" (2m) x 82'
9'10" (3m) x 82' 13'1" (4m) x 82'
(rolls do not have beveled borders)

Total Customization: Up to 13'1" x 82'

Thickness: 3/8"

WARRANTY

Total Confidence



Boardwalk™ p. 7,
Grounds-Keeper™ (foreground) p. 13

#225 Tire-Track™

SCRAPER / WIPER | HEAVY TRAFFIC



FEATURES

- Industrial strength carpet can hold up to 2 gallons of liquid per square yard
- Unique pattern offers effective scraping action and long lasting appearance
- ThermoFlex™ vinyl backing offers superior floor protection

SPECIFICATIONS

Standard Sizes: 2' x 3' 3' x 4' 3' x 5'
3' x 10' 4' x 6' 4' x 10'

Rolls: 3' x 60' 4' x 60' 6' x 60'

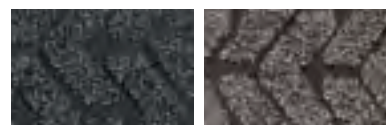
Total Customization: Length/Width cuts up to 6' x 60'

Finish: ThermoFlex™ vinyl backing/borders

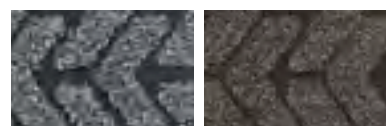
Thickness: 3/8"

WARRANTY

Total Confidence



Charcoal Taupe



Gray Brown



Bi-Level Polypropylene needlepunch pattern.
3/8" Thick

#300 Grounds-Keeper™

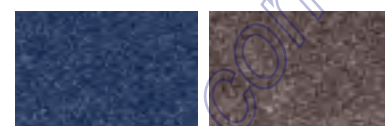
WIPER | HEAVY TRAFFIC



Black Castellan Red



Charcoal Evergreen



Marlin Blue Walnut



Navy Blue Pebble Brown



1/2" Thick

FEATURES

- Retains 60% more liquid and fine dirt than our popular Rely-On Olefin™
- Dries three times faster than nylon or polyester rental mats
- ThermoFlex™ vinyl backing is 35% thicker than Rely-On Olefin™ for extreme durability

SPECIFICATIONS

Standard Sizes: 2' x 3' 3' x 4' 3' x 5'
3' x 10' 4' x 6' 4' x 10'

Rolls: 3' x 60' 4' x 60' 6' x 60'

Total Customization: Up to 11'9 x 60'

Finish: ThermoFlex™ vinyl backing/borders

Thickness: 1/2"

WARRANTY

Total Confidence



#270/271 EcoPlus™

SCRAPER / WIPER | HEAVY TRAFFIC



FEATURES

- Elevated construction will scrape shoes and hold dirt beneath shoe level, while absorbing up to one gallon of moisture
- Soft 100% recycled polyester fiber top surface allows for better wiping action
- Rubber blend backing with 20% post-consumer recycled tires

SPECIFICATIONS

Standard Sizes: 2' x 3' 3' x 4' 3' x 5'
3' x 8' 3' x 10' 4' x 6'
6' x 8'

(Trade sizes, see actual specs in price list)

Total Customization: Limited length cuts up to 6' x 20'

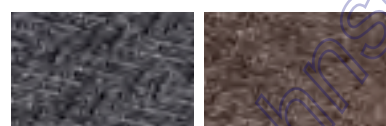
Finish: #270 Rubber borders

#271 Fabric covered borders

Thickness: 3/8"

WARRANTY

Total Confidence



Charcoal Walnut



Midnight Blue



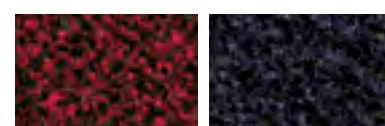
3/8" Thick

#350 Dust-Star™

WIPER | HEAVY TRAFFIC



Charcoal Walnut



Red Marlin Blue



Two-tone color mat for a better camouflage of particles.
1/2" Thick

FEATURES

- Unique microfiber/olefin blend with incredible dust and moisture retention properties
- Positively charged microfibers will attract hair, lint, dust and keep them from polluting the air
- Holds close to three times more liquid than our traditional Rely-On Olefin™

SPECIFICATIONS

Standard Sizes: 2' x 3' 3' x 4' 3' x 5'
3' x 10' 4' x 6' 4' x 10'

Rolls: 3' x 60' 4' x 60' 6' x 60'

Total Customization: Up to 11'9 x 60'

Finish: ThermoFlex™ vinyl backing/borders

Thickness: 1/2"

WARRANTY

Total Confidence



#240 Needle-Pin®

SCRAPER / WIPER | MEDIUM TRAFFIC



FEATURES

- Raised berber-style surface that scrapes dirt and removes moisture efficiently
- Crush resistant surface reduces appearance of foot traffic
- ThermoFlex™ vinyl backing offers superior floor protection

SPECIFICATIONS

Standard Sizes: 2' x 3' 3' x 4' 3' x 5'
3' x 10' 4' x 6' 4' x 10'

Rolls: 3' x 60' 4' x 60' 6' x 60'

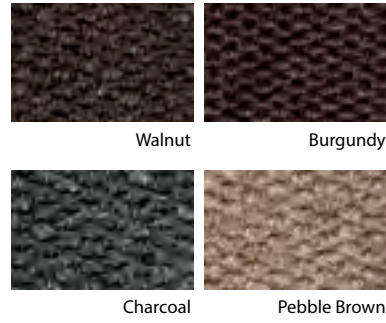
Total Customization: Up to 11'9"x60'

Finish: ThermoFlex™ vinyl backing/borders

Thickness: 7/16"

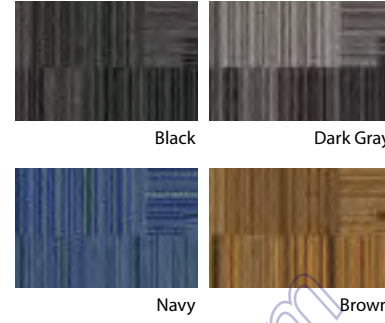
WARRANTY

1 Year



#365 Skyline

WIPER | MEDIUM TRAFFIC



FEATURES

- Enhance the appearance of your facility with this modern design
- Twisted and heat set 6,6 nylon fibers offer maximum performance
- Nitrile rubber backing allows for laundering

SPECIFICATIONS

Standard Sizes: 2' x 3' 3' x 5' 3' x 10'
4' x 6' 6' x 8'

(Trade sizes, see actual specs in price list)

Total Customization: Unavailable

Finish: Nitrile Rubber

Thickness: 1/4"

WARRANTY

1 Year



#230 Chevron™

SCRAPER / WIPER | MEDIUM TRAFFIC



FEATURES

- Vivid, nonfading colors that resist fading
- ThermoFlex™ vinyl backing offers superior floor protection
- Surface made from 50% P.E.T. recycled fibers

SPECIFICATIONS

Standard Sizes: 2' x 3' 3' x 4' 3' x 5'
3' x 10' 4' x 6' 4' x 10'

Rolls: 3' x 60' 4' x 60' 6' x 60'

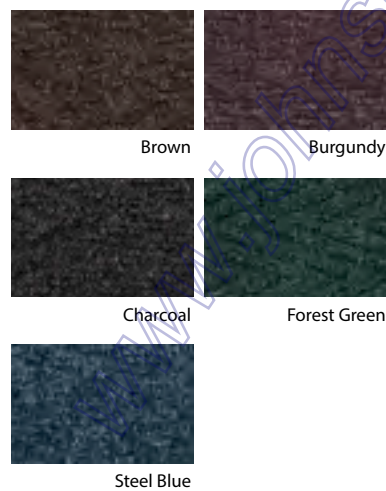
Total Customization: Up to 11'9" x 60'

Finish: ThermoFlex™ vinyl backing/borders

Thickness: 5/16"

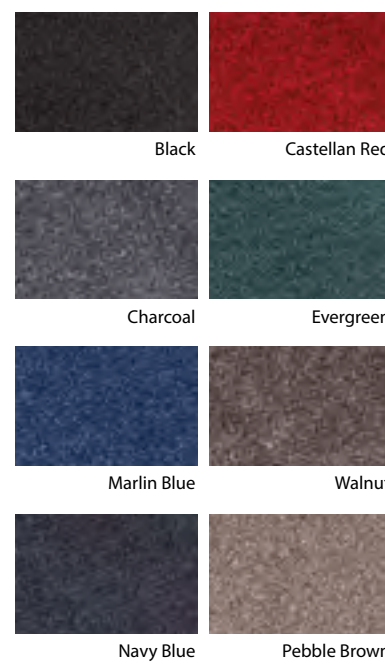
WARRANTY

1 Year



#310 Wonder-Pro™

WIPER | MEDIUM TRAFFIC



FEATURES

- Retains 60% more liquid and fine dirt than our popular Rely-On Olefin™
- Wide selection of colors are resistant to fading
- Premium vinyl backing provides a moisture barrier to help protect floors

SPECIFICATIONS

Standard Sizes: 2' x 3' 3' x 4' 3' x 5'
3' x 10' 4' x 6' 4' x 10'

Rolls: 3' x 60' 4' x 60' 6' x 60'

Total Customization: Up to 11'9" x 60'

Finish: ThermoFlex™ vinyl backing/borders

Thickness: 7/16"

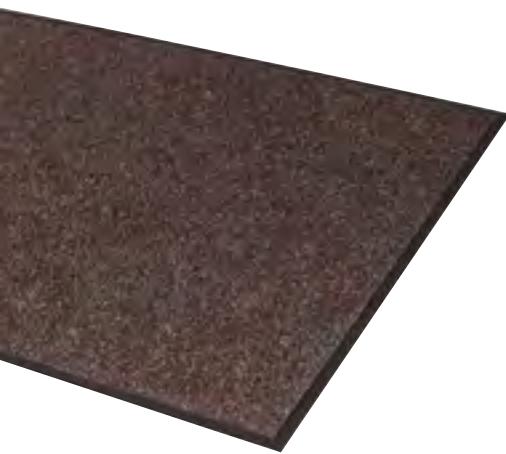
WARRANTY

1 Year



#235 Needle-Rib™

SCRAPER / WIPER | LIGHT TRAFFIC



FEATURES

- Unilateral ribbed pattern on vinyl backing that traps moisture and protects floors
- Quick drying and fade resistant
- Surface made from 50% P.E.T. recycled fiber

SPECIFICATIONS

Standard Sizes: 2' x 3' 3' x 4' 3' x 5'
3' x 10' 4' x 6' 4' x 10'

Rolls: 3' x 60' 4' x 60' 6' x 60'

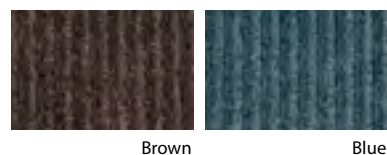
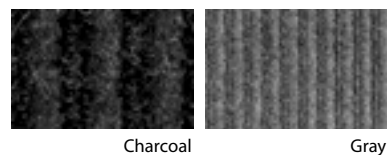
Total Customization: Up to 6' x 60'

Finish: Vinyl backing and borders

Thickness: 5/16"

WARRANTY

1 Year



#345 Eco-Step™

WIPER | LIGHT TRAFFIC



FEATURES

- Retains 20% more liquid and fine dirt than our popular Rely-On Olefin™
- Premium vinyl backing with natural organic resin blend prevents water from damaging floor
- New green generation wiper mat made of 100% P.E.T. fiber recycled surface!

SPECIFICATIONS

Standard Sizes: 2' x 3' 3' x 4' 3' x 5'
3' x 10' 4' x 6' 4' x 10'

Rolls: 3' x 60' 4' x 60' 6' x 60'

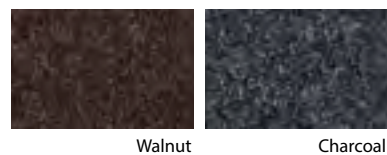
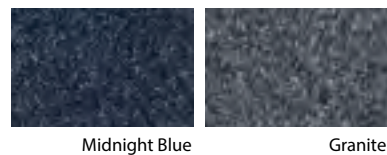
Total Customization: Up to 11'9 x 60'

Finish: ThermoFlex vinyl backing/borders

Thickness: 1/4"

WARRANTY

1 Year



#315 Rely-On Olefin™

WIPER | LIGHT TRAFFIC



FEATURES

- Economical olefin wiper mat available in a wide array of colors to match most décors
- Small profile fits under most doors
- Vinyl backing provides moisture barrier to help protect floors

SPECIFICATIONS

Standard Sizes: 2' x 3' 3' x 4' 3' x 5'
3' x 10' 4' x 6' 4' x 10'

Rolls: 3' x 60' 4' x 60' 6' x 60'

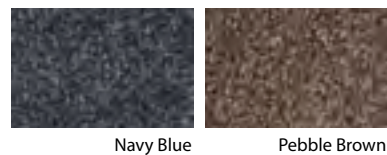
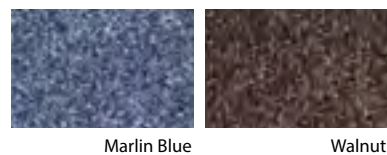
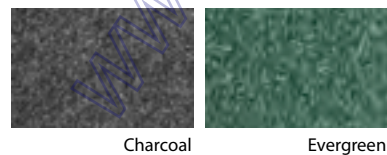
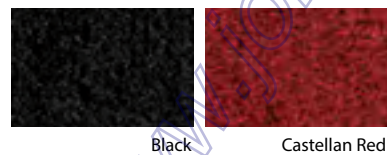
Total Customization: Up to 6' x 60'

Finish: Vinyl backing and borders

Thickness: 7/16"

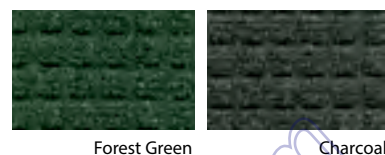
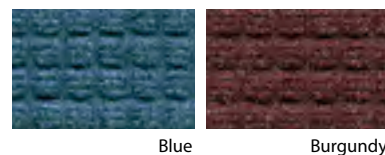
WARRANTY

1 Year



#250/251 Super-Soaker™

SCRAPER / WIPER | LIGHT TRAFFIC



FEATURES

- Non-skid nib backing will effectively grip mat to the floor
- Crush-proof waffle pattern will scrape shoes and hold dirt beneath shoe level, while wiping moisture
- 100% solution-dyed polypropylene surface won't fade or rot

SPECIFICATIONS

Standard Sizes: 2' x 3' 3' x 4' 3' x 5' 3' x 10'
4' x 6' 4' x 8' 4' x 10' 6' x 10'

(Trade sizes, see actual specs in price list)

Total Customization: Unavailable

Finish: #250 Rubber borders; #251 Fabric borders

Thickness: 3/8"

WARRANTY

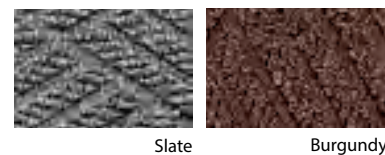
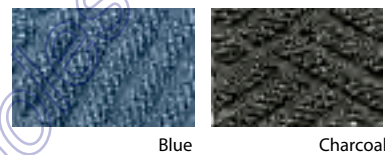
Total Confidence



3/8" Thick

#261/262 Super-Soaker™ Diamond

SCRAPER / WIPER | LIGHT TRAFFIC



FEATURES

- Make your choice from a variety of stock sizes and 5 rich-looking colors to give the final touch to your décor
- Molded rubber backing for increased durability, flexibility and easy maintenance
- Backing contains 20% recycled material

SPECIFICATIONS

Standard Sizes: 2' x 3' 3' x 4' 3' x 5' 3' x 10'
4' x 6' 4' x 8' 4' x 10' 6' x 8'

(Trade sizes, see actual specs in price list)

Total Customization: Unavailable

Finish: #261 Rubber borders; #262 Fabric borders

Thickness: 3/8"

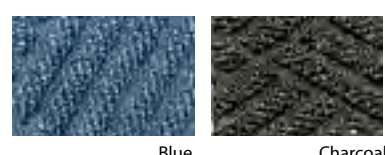
WARRANTY

Total Confidence



#252/253/254 Super-Soaker™ Fan

SCRAPER / WIPER | LIGHT TRAFFIC



FEATURES

- Includes all the advantages of our Super-Soaker™ Diamond line of products
- Finished with fabric borders for a richer, more aesthetic look
- One-piece molded product for maximum durability

SPECIFICATIONS

Standard Sizes:

#252 half oval:	34" x 21"	45" x 26"	73" x 41"
#253 single fan end:	34" x 65"	35" x 77"	35" x 134"
	45" x 94"	45" x 163"	72" x 130"
#254 double fan end:	35" x 96"	35" x 154"	45" x 117"
	45" x 165"	45" x 187"	

Total Customization: Unavailable

Finish: #252 Half oval, #253 Single-fan end, #254 Double-fan end

Thickness: 3/8"

WARRANTY Total Confidence



Logo/Specialty Mats & Accessories



Adding a logo to commercial matting can be an effective tool for enhancing the appearance and professionalism of any business or institutional environment. Logo mats can be used as highly visible entrance mats, a centerpiece for a lobby or reception areas, or a way to build an organization's image wherever internal matting is utilized.

Crown Matting Technologies provides a number of options for customers looking to add a logo to their overall matting programs. From flocked mats and Graphic Inlays to HD Jet Print and Crown-Tred Printed Mats, Crown can best match your need with the most appropriate matting application.

In addition to logo mats, Crown offers an extensive line of specialty mats and accessories to meet even the most complex or unique matting challenges.

Cross-Over™ Graphic Inlay p. 19

Graphic Inlay

Used in heavy indoor traffic areas. Our heavy duty needle punch material with abrasive raised patterns (Marathon™, Oxford™ Elite and Cross-Over™) serves as the base material and our high definition digital ink print nylon design is secured into the mat to create your logo brand and/or statement. The backing is our ThermoFlex™ vinyl and we offer over 600 colors to create your logo. Maximum customized size is 11 ft 9 inches x 50 ft.

#020 Marathon™ Graphic Inlay

LOGO MATS | SCRAPER / WIPER | HEAVY TRAFFIC

FEATURES

- Raised pattern scrapes dirt and removes moisture efficiently
- High-definition logo printed on dense nylon fibers and inserted into the mat to create a strong visual message
- ThermoFlex™ vinyl backing offers superior floor protection
- No minimum quantity, no set up charge, PMS color match available (surcharge)

SPECIFICATIONS

Standard Sizes: 3' x 5' 3' x 10' 4' x 6' 4' x 8' 4' x 10' 6' x 10'

Rolls: Unavailable

Total Customization: Up to 11'9" x 60"

Finish: ThermoFlex™ vinyl backing and borders/ High-definition Graphic Inlay

WARRANTY Total Confidence

For colors and additional product information see #228 Marathon on page 11.

#021 Oxford™ Elite Graphic Inlay

LOGO MATS | SCRAPER / WIPER | MED-HEAVY TRAFFIC

FEATURES

- Mix of abrasive and sturdy olefin fibers for well balanced wiping and scraping performance
- High-definition logo printed on dense nylon fibers and inserted into the mat to create a strong visual message.
- ThermoFlex™ vinyl backing offers superior floor protection
- No minimum quantity, no set up charge, PMS color match available (surcharge)

SPECIFICATIONS

Standard Sizes: 3' x 5' 3' x 10' 4' x 6' 4' x 8' 4' x 10' 6' x 10'

Rolls: Unavailable

Total Customization: Up to 11'9" x 60"

Finish: ThermoFlex™ vinyl backing and borders/ High-definition Graphic Inlay

WARRANTY Total Confidence

For colors and additional product information see #265 Oxford™ Elite on page 4.

#022 Cross-Over™ Graphic Inlay

LOGO MATS | SCRAPER / WIPER | MEDIUM TRAFFIC

FEATURES

- Abrasive loop-pile surface scrapes debris and moisture from footwear while sturdy olefin fibers start the drying process
- High-definition logo printed on dense nylon fibers and inserted into the mat to create a strong visual message
- ThermoFlex™ vinyl backing offers superior floor protection
- No minimum quantity, no set up charge, PMS color match available (surcharge)

SPECIFICATIONS

Standard Sizes: 3' x 5' 3' x 10' 4' x 6' 4' x 8' 4' x 10' 6' x 10'

Rolls: Unavailable

Total Customization: Up to 11'9" x 60"

Finish: ThermoFlex™ vinyl backing and borders/High-definition Graphic Inlay

For colors and additional product information see #255 Cross-Over™ on page 5.

WARRANTY

Total Confidence

#025 Super-Soaker™ Inlay

LOGO MATS | SCRAPER / WIPER | MEDIUM TRAFFIC

FEATURES

- Super-Soaker™ Inlay is a precision cut of your logo molded to a rubber cleated backing
- Molded nitrile rubber backing helps to reduce mat movement
- Great for indoor and covered outdoor placement
- No minimum quantity, no set up charge

SPECIFICATIONS

Standard Sizes: 2' x 3' 3' x 4' 3' x 5' 3' x 10' 3' x 12' 3' x 15' 3' x 20' 4' x 6' 4' x 8' 4' x 10' 4' x 12' 4' x 14' 4' x 16' 4' x 20' 6' x 5' 6' x 6' 6' x 8' 6' x 10' 6' x 12' 6' x 14' 6' x 16' 6' x 18' 6' x 20' Trade sizes - see actual in price list

Rolls: Unavailable

Custom Sizes: unavailable

Finish: Rubber edging Fabric Edging Rubber cleated backing

WARRANTY

Total Confidence

COLORS

Base colors: Med. Brown, Dark Brown, Med Gray, Charcoal, Evergreen, Navy, Med Blue, Bluestone, Red/Black

Logo Colors: White, Yellow, Gold, Purple, Orange, Solid Red, Light Green, Aquamarine

For additional product information see #250-254 & #261/262 Super-Soaker™ on page 17.

Flocked Mats

Used for moderate to low traffic areas for indoor use only. A logo is produced on our Olefin Mat using electrical statically charged nylons fibers creating a strong visual of your image and message. The imprint will be slightly raised and able to apply up to 4 colors.

#010 Flocked Mat

LOGO MATS | WIPER | LIGHT TRAFFIC

FEATURES

- 100% olefin mat with vinyl backing absorbs moisture, traps fine dust and protects floors
- Flocked process; nylon fibers electrostatically charged and applied to the carpet surface with adhesive
- Available on different carpet quality (Rely-On™ - light usage, Eco-Step™ - 100% recycled surface - medium usage)
- More than 20 PMS contrasting flocking colors available - should state "SPECIAL COLORS ON REQUEST – SURCHARGE APPLIES, CONTACT CUSTOMER SERVICE"

SPECIFICATIONS

Standard Sizes: 2' x 3' 3' x 4' 3' x 5'
3' x 6' 4' x 6'

Rolls: Unavailable

Total Customization: Available; call customer service

Finish: Contrasting flocking colors

WARRANTY

1 Year

COLORS

Mat Colors:

Black, Burgundy, Castellan Red, Charcoal, Evergreen, Marlin Blue, Mid-Gray, Navy Blue, Pebble Brown, Walnut, Solid Red, Solid Blue, Walnut*, Charcoal*, Granite*, Midnight Blue*

**Eco-Step™ Only*

Flock Colors:

PMS 199C, PMS 3435C, PMS 129C, PMS 209C, PMS MAGENTA, PMS 166C, PMS 466C, PMS 320U, WHITE, PMS 287C, PMS 267C, PMS 2945, PMS 4625, PROCESS YELLOW C, PMS 138C, BLUE U, PMS 424U, PMS 421U, PMS 282C, BLACK



#050 Embossed Anti-Fatigue Mat

LOGO MATS | ERGONOMIC | DRY AREAS

FEATURES

- Stimulates blood circulation and reduces muscular pain caused by standing for long periods of time
- High-quality embossed image technology for maximum durability
- Set-up fee required/Choose up to 3 logo colors. Min. order 50 mats
- Also available with anti-microbial additive, Min. order 300 Mats. Call customer service

SPECIFICATIONS

Standard Sizes: 2' x 3' 3' x 4' 3' x 5' 3' x 10'

Rolls: Unavailable

Total Customization: Available; call customer service

Finish:

- Style 1** – Embossed no color
- Style 2** – Embossed with vinyl
- Style 4** – Digital file print contact customer service

WARRANTY

1 Year

COLORS

- 3/8" Tuff Spun** – Black, Gray
- 3/8" Comfort King** – Black, Royal Blue, Steel Gray

HD Jet Print

Used in heavy traffic areas for indoor use only. This High Definition Digital Ink Printed nylon mat allows excellent color tones and shading capabilities that capture a photo quality look. The backing is a premium 70 mil vinyl. Over 600 colors available.

#035 HD Jet-Print™

LOGO MATS | WIPER | MED-HEAVY TRAFFIC

FEATURES

- Unlimited color combinations available to create your personalized message or logo. PMS color match available (surcharge)
- High-Definition logo printed nylon mat offers up to 10 times the definition of a regular printed mat. Retains 50% more liquid and fine dirt than our standard Jet Print
- No minimum quantity, no set-up charge

SPECIFICATIONS

Standard Sizes: 24" x 35" (apx. 2' x 3') 35" x 47" (apx. 3' x 4')
35" x 59" (apx. 3' x 5') 35" x 119" (apx. 3' x 10")
45" x 69" (apx. 4' x 6') 45" x 95" (apx. 4' x 8') 58" x 95" (apx. 5' x 8')
58" x 119" (apx. 5' x 10') *this size is not on the sell sheet, but it is available*
68" x 119" (apx. 6' x 10') 68" x 143" (apx. 6' x 12')

Rolls: Unavailable

Total Customization: Length/Width cuts up to 6'x40'

Finish: Vinyl backing and borders, Excellent digital reproduction

WARRANTY

Total Confidence

COLORS

Up to 150 available colors

#021 Jet-Print™

LOGO MATS | WIPER | MEDIUM TRAFFIC

FEATURES

- Unlimited color combinations available to create your personalized message or logo. PMS color match available (surcharge)
- Printed nylon surface
- No minimum quantity, no set-up charge

SPECIFICATIONS

Standard Sizes: 24" x 35" (apx. 2' x 3') 35" x 47" (apx. 3' x 4')
35" x 59" (apx. 3' x 5') 35" x 119" (apx. 3' x 10")
45" x 69" (apx. 4' x 6') 45" x 95" (apx. 4' x 8') 58" x 95" (apx. 5' x 8')
58" x 119" (apx. 5' x 10') *this size is not on the sell sheet, but it is available*
68" x 119" (apx. 6' x 10') 68" x 143" (apx. 6' x 12')

Rolls: Unavailable

Total Customization: Length/Width cuts up to 6'x40'

Finish: Rubber cleated backing, Digital reproduction

WARRANTY

Total Confidence

COLORS

Black, Burgundy, Moss Green, Forest Green, Emerald Green, Dark Gold, Chocolate, Light Blue, Gold, Dark Gray, White Silver, Suede, Navy, Orange, Pearl White, Red, Royal Blue, Silver, Sandalwood, Yellow, Hot Pink, Up to 300 available colors

Crown-Tred Printed Mats

Used in heavy traffic areas for outdoor/ indoor use. The nitrile rubber scraper will withstand all weather elements and is UV protected. The image is digitally printed on a thermoplastic material and molded onto the mat which allows excellent color tones and color variations. The permanent bond process allows for a long lasting impression.

#040 Crown-Tred™ Printed

LOGO MATS | SCRAPER | LIGHT TRAFFIC

FEATURES

- First line of defense: designed for outdoors (UV resistant) and between entrance door applications
- Excellent color tones and shades with unparalleled detail and clarity
- Durable ¼" nitrile rubber construction. Oil, grease and chemical resistant
- No minimum quantity, no set up charge, PMS color match available (surcharge)

SPECIFICATIONS

Standard Sizes: 29" x 34" (apx. 2' 6" x 3')
34" x 54" (apx. 3' x 5') 34" x 111" (3' x 10') 45" x 67" (apx. 4' x 6')
45" x 95" (apx. 4' x 8') 68" x 68" (apx. 6' x 6') 71" x 96" (apx. 6' x 8')

Rolls: Unavailable

Total Customization: Unavailable

Finish: Nitrile Rubber blend

WARRANTY

Total Confidence

COLORS

Black

#900 Stat-Zap® Carpet Top

SPECIALTY

**FEATURES**

- Attractive conductive loop carpet with a resistivity of 10⁹ ohms per square
- Anti-slip Rug-Hugger™ backing to reduce mat movement on carpeting
- Stock mats include ground cord, which can be connected to an electrical outlet

SPECIFICATIONS

Standard Sizes: 2' x 3' 3' x 4' 3' x 5' 3' x 6' 3' x 10' 4' x 6' 4' x 8' 4' x 10'

Rolls: 3' x 60' 4' x 60'

Total Customization: Custom cuts need one grounding cord per 10' (sold separately)

Finish: Vinyl backing and borders with anti-slip Rug-Hugger™

WARRANTY 1 Year



Pewter



Ground cord

#995 Walk-N-Clean™

SPECIALTY

**FEATURES**

- 60 shoe-cleaning tacky sheets treated with an anti-microbial agent protects against growth of bacteria, mold and mildew
- Nontoxic, refillable frame with a slip resistant backing
- When top layer is dirty, simply peel and discard

SPECIFICATIONS

Standard Sizes: Single Tray: 31 1/2" x 25 1/2" Double Tray: 31 1/2" x 51"
Refill 30" x 24" (case of 4 replacement pads)

Finish: Nonskid polyethylene backing

WARRANTY 1 Year



White



Gray

#102 Disinfectant Boot Bath

SPECIALTY

**FEATURES**

- 2" raised wall to hold any USDA accepted disinfectant sanitizer or liquid for hygienic cleaning
- Aggressive rubber fingertips scrape bottom of boots reducing the risk of cross contamination
- Yellow raised borders for high visibility and increased safety

SPECIFICATIONS

Standard Sizes: 32" x 39"

Total Customization: Unavailable

WARRANTY 1 Year



Black with Yellow Borders

#990 Chair Mats

SPECIALTY

**FEATURES**

- Commercial-quality chair mats for offices allow desk chairs to move effortlessly
- Available in different models for all types of carpet and flooring and anti-static (10¹¹ ohms per square) option

SPECIFICATIONS

Standard Sizes: 45" x 53" with 12"x25" lip 46" x 60" with 12"x25" lip

Custom Sizes: Ask customer service

WARRANTY 1 Year

Rug-Hugger™ Backing

ACCESSORY

FEATURES / SPECIFICATIONS

- Anti-slip backing to reduce mat movement on carpets
- Can be factory applied to most vinyl backed products

**Mat-Lock™ Backing**

ACCESSORY

FEATURES / SPECIFICATIONS

- Slip-resistant backing to secure mat to hard surfaces such as wood, ceramic tile, marble, linoleum, etc.
- Can be factory applied to most vinyl backed products

**Velcro® Backing Strips**

ACCESSORY

FEATURES / SPECIFICATIONS

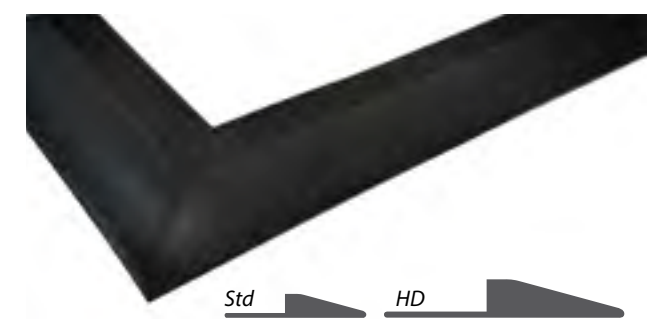
- Self-applied adhesive Velcro strips to secure mat to loop-pile carpeting
- Can be easily applied to most vinyl backed products
- Available in 4" wide strips cut to length or by the 75' roll

**Nosing**

ACCESSORY

FEATURES / SPECIFICATIONS

- Loose edging to be applied to ends of your mat
- Available in standard rolls of 3/4" x 100' or heavy-duty rolls of 1 1/2" x 50'



Std

HD

Tack-Tape™

ACCESSORY

FEATURES / SPECIFICATIONS

- Specially designed double-sided tape for securing foam products and vinyl backed carpet mats to floors
- Roll dimensions, 4" x 250'



Ergonomic Mats

Ergonomic mats help ease leg, foot, and lower back fatigue and pain and can also assist in the areas of slip resistance, wet-area drainage, and worker safety.

Strong. Resilient. Safe.

Three critical matting features that can dramatically influence the success of your workforce and your business. Zedlan™ Foam was developed with these workplace imperatives in mind.

- Strong - Zedlan™ Foam outwears similar products by nearly 3-to-1
- Resilient - Zedlan™ Foam has three times the bounce of traditional ergonomic products
- Safe - combined with our exclusive slip resistant technology, Zedlan™ Foam offers superior traction compared to standard foam products

Zedlan™ Foam. Just one more way we support our customers by developing industry leading products that support their workforce.



#546/556 Workers-Delight™ Slate

DRY AREA | PREMIUM



Dark Gray Light Gray



Brown



Zedlan™ Foam

FEATURES

- Our new modern design combined with our patented Zedlan™ Foam creates the ultimate combination of form and function
- UV-Cured PVC top surface facilitates ease of maintenance
- New slip-resistant coating on underside of mat ensures steadiness and control on smooth surfaces
- Use for cashier stations, pharmacies, medical/dental offices, laboratories, pick modules, warehousing

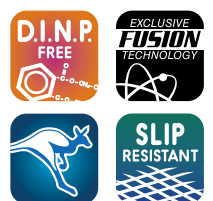
SPECIFICATIONS

Standard Sizes: 2' x 3' 3' x 5' 3' x 12'
Rolls: 2' x 60' 3' x 60' 4' x 60'
Thickness: #546 - Standard - 5/8"
 #556 - Ultra - 7/8" provides 50% more comfort

WARRANTY

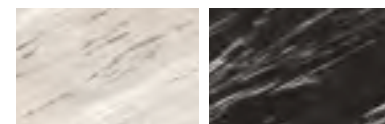
Lifetime Warranty against delamination

New!



#541 Workers-Delight™ Supreme

DRY AREA | PREMIUM



French Gray Black



Zedlan™ Foam

FEATURES

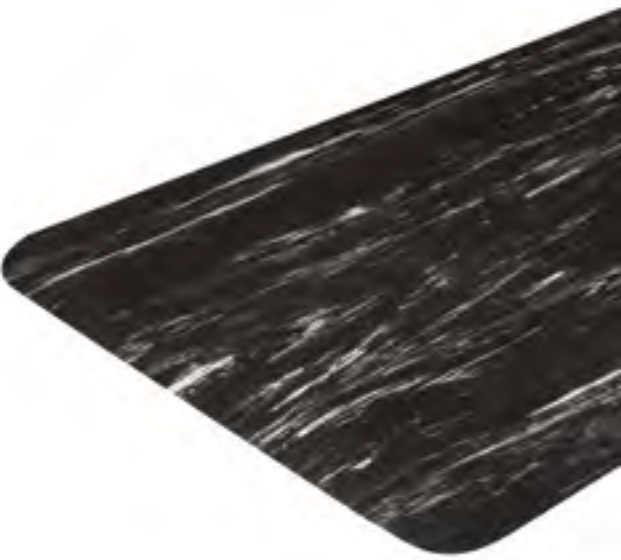
- Puncture-resistant PVC top surface allows for better durability and stability
- Patented Zedlan™ Foam combined with our fusion technology creates an unmatched level of durability and comfort
- New slip-resistant coating on underside of mat ensures steadiness and control on smooth surfaces
- Use for cashier stations, pharmacies, medical/dental offices, laboratories, pick modules, warehousing

SPECIFICATIONS

Standard Sizes: 2' x 3' 3' x 5' 3' x 12'
Rolls: 2' x 60' 3' x 60' 4' x 60'
Total Customization: Up to 12' wide
Thickness: #541 - Standard - 5/8"

WARRANTY

Lifetime Warranty against delamination



#543/#553 Workers-Delight™ Traction Plus

DRY AREA | PREMIUM



New!

FEATURES

- Innovative PVC raised-herringbone top surface affords multi-directional grip
- Patented Zedlan™ Foam combined with our fusion technology creates an unmatched level of durability and comfort
- New slip-resistant coating on underside of mat ensures steadiness and control on smooth surfaces
- Use for finishing stations, assembly stations and work stations

SPECIFICATIONS

Standard Sizes: 2' x 3' 3' x 5' 3' x 12'

Rolls: 2' x 75' 3' x 75' 4' x 75'

Total Customization: Up to 12' wide

Thickness:

#543 - Standard - 5/8"
(30% recycled content)

#553 - Ultra - 7/8" provides 50% more comfort
(20% recycled content)

WARRANTY

Lifetime Warranty against delamination

COLORS

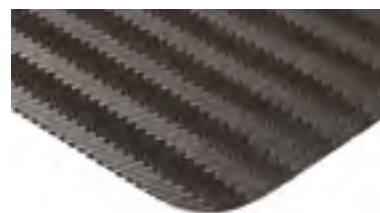
Black



Herringbone PVC surface



Zedlan™ Foam with slip-resistant coating



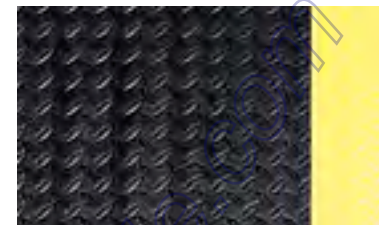
Rounded corners and beveled edges

#560/#562 Wear-Bond™ Comfort-King™

DRY AREA | BEST



#560 Foam-injected PVC pebble embossed surface



#562 Foam-injected PVC deck-top surface



Zedlan™ Foam

FEATURES

- Wear-Bond™ process molecularly bonds foam-injected PVC top surface with Zedlan™ Foam, creating greater overall comfort than rigid PVC/rubber-type surfaces
- Patented Zedlan™ Foam combined with our fusion technology creates an unmatched level of durability and comfort
- Use for work stations, pick modules, pharmacies, packaging areas or cashier stations

SPECIFICATIONS

Standard Sizes: 2' x 3' 3' x 5' 3' x 12'

Rolls: 2' x 75' 3' x 75' 4' x 75'

Total Customization: Up to 75'

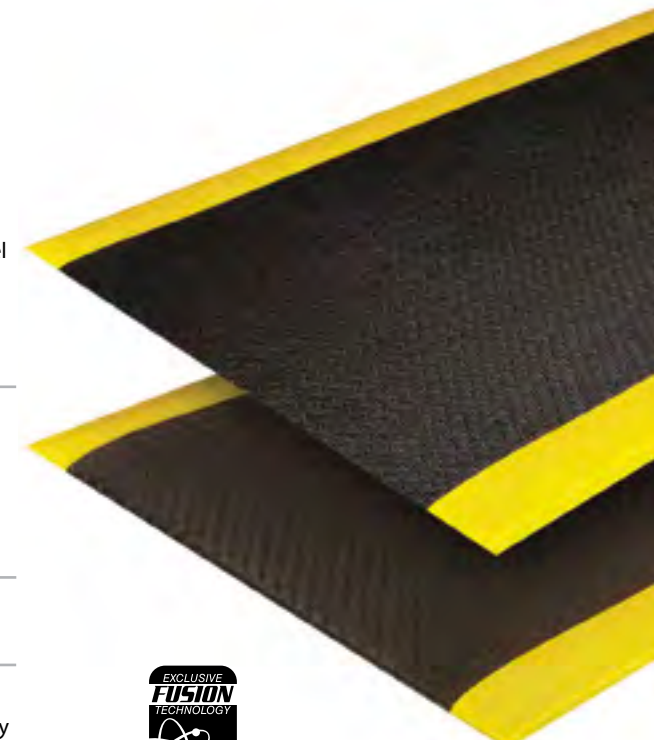
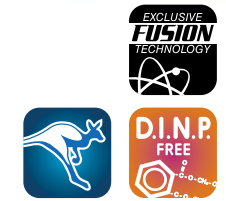
Thickness: 9/16"

WARRANTY

Lifetime Warranty against delamination

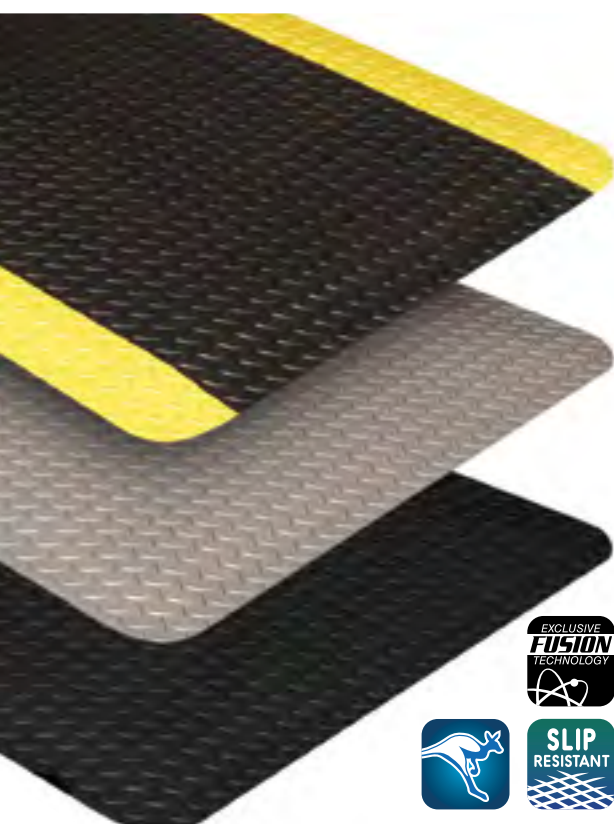
COLORS

#560 Pebble Surface: Black & Yellow, Black, Gray
#562 Deck-Top Surface: Black & Yellow, Black, Gray



#540/#550 Workers-Delight™ Deck Plate

DRY AREA | PREMIUM



FEATURES

- Deck plate PVC surface offers comfort and durability
- Patented Zedlan™ Foam combined with our fusion technology creates an unmatched level of durability and comfort
- New slip-resistant coating on underside of mat ensures steadiness and control on smooth surfaces
- Use for assembly lines, work stations, cart traffic areas, finishing stations or assembly stations

SPECIFICATIONS

Standard Sizes: 2' x 3' 3' x 5' 3' x 12'

Rolls: 2' x 75' 3' x 75' 4' x 75'

Total Customization: Up to 12' wide

Thickness:

#540 - Supreme - 5/8"
(25% recycled content)

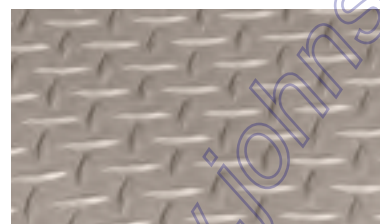
#550 - Ultra - 7/8" provides 25 % more comfort
(20% recycled content)

WARRANTY

Lifetime Warranty against delamination

COLORS

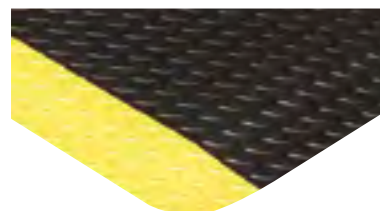
Black & Yellow, Gray, Black



Deck plate PVC surface



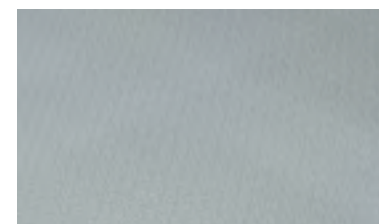
Zedlan™ Foam with slip-resistant coating



Rounded corners and beveled edges

#465 Alleviator™ Comfort-King™

DRY AREA | BEST



Textured surface



Zedlan™ Foam



Beveled edges

FEATURES

- Double-thick patented Zedlan™ Foam adds unmatched comfort and resilience
- Specifically designed for employee work stations
- Use for cashier stations, hotel front desks, pharmacies or retail work counters

SPECIFICATIONS

Standard Sizes: 2' x 3' 3' x 5'

Rolls: 2' x 30' 3' x 30' 4' x 30'

Total Customization: Up to 75'

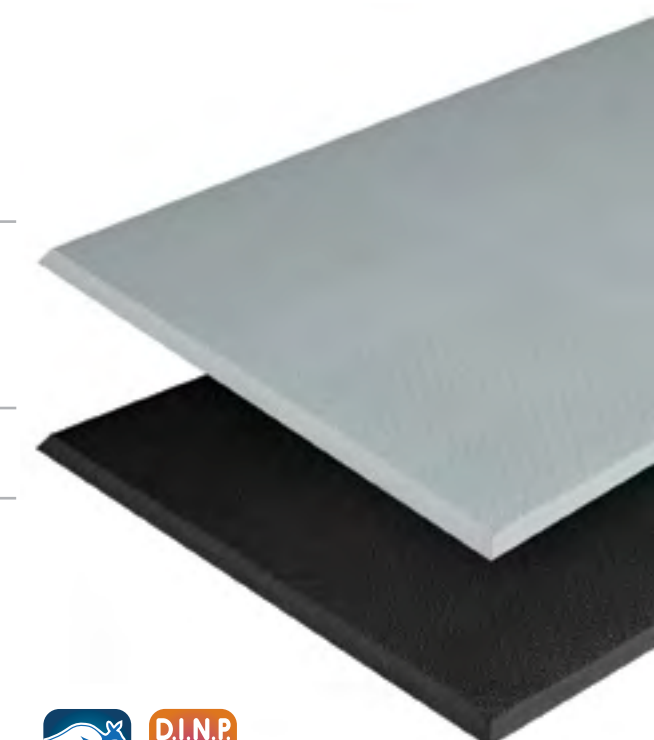
Thickness: 7/8"

WARRANTY

1 Year

COLORS

Steel Gray, Black



#440/#445 Comfort-King™

DRY AREA | BEST

FEATURES

- Patented Zedlan™ Foam outwears other foam products by nearly 3-to-1
- Available with anti-microbial additives to help prevent mold, mildew, and bacterial growth (#910). Ask your Crown Customer Service Representative for more information
- Use for work stations, finishing/assembly stations, cashier stations or pharmacies

SPECIFICATIONS

Standard Sizes: 2' x 3' 3' x 5' 3' x 12'

Rolls: 2' x 60' 3' x 60' 4' x 60'
6' x 60'*

**Not available with yellow borders*

Total Customization: Up to 60'

Thickness:

#440 - Standard - 3/8"

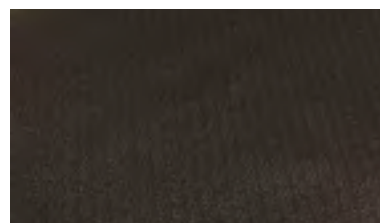
#445 - Supreme - 1/2" provides 33% more comfort

WARRANTY

1 Year

COLORS

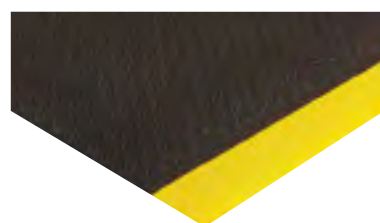
Black & Yellow, Steel Gray, Royal Blue, Black



Textured surface



Zedlan™ Foam



Tapered edges

#685 Safety-Step™ Solid-Top

DRY AREA | BETTER

FEATURES

- Solid rubber interlocking system allows for unlimited length and width onsite configurations (1' increments)
- Optional snap-on ramps available in black or yellow
- Use for factory work stations, large work cells or assembly lines

SPECIFICATIONS

Standard Sizes: 3' x 3'

Total Customization: Up to 12' wide

Thickness: 5/8"

WARRANTY

1 Year

COLORS

Black with built in connectors, Yellow ramp or Beveled Black available



Solid rubber



Rubber nubs on underside



Modular built-in connectors

#649 Para-Mount™

DRY AREA | BEST

New!

FEATURES

- Patented nitrile rubber construction resists water, oil, and solvents
- Anti-microbial properties help prevent mold, mildew, and bacterial growth
- Nitrile rubber properties allow for an easy-to-clean product
- For use in virtually any work station, wet or dry

SPECIFICATIONS

Standard Sizes: 2' x 3' 3' x 5'
3' x 10' 4' x 6'

(Trade sizes, see actual specs in price list)

Thickness: 3/4"

WARRANTY

1 Year

COLORS

Black



Textured surface



100% Nitrile rubber



Beveled edges

#695 Yoga-Flex®

DRY AREA | BETTER

FEATURES

- High/Low bubble surface encourages micro-movements that reduce fatigue and muscle pain
- Interlocking system allows for unlimited length of matting (47" increments)
- Use for factories, work stations, finishing / assembly stations or shipping and packaging areas

SPECIFICATIONS

Standard Sizes:

Mat: 2' x 3'

Modular Center: 35" x 47"

Modular End: 35" x 47"

Total Customization: Unavailable

Thickness: 1/2"

WARRANTY

1 Year

COLORS

Black



Bubble-top surface



Industrial grade rubber



Interlocking design with beveled edges

#520/#522 Wear-Bond™ Tuff-Spun®

DRY AREA | GOOD

FEATURES

- Wear-Bond™ process molecularly bonds foam-injected PVC top surface with industrial-grade foam, creating greater overall comfort than rigid PVC/rubber-type surfaces
- Use for assembly stations, packaging areas, service counters or cashier stations

SPECIFICATIONS

Standard Sizes: 2' x 3' 3' x 5' 3' x 12'

Rolls: 2' x 75' 3' x 75' 4' x 75'

Total Customization: Up to 75'

Thickness: 9/16"

WARRANTY

1 Year

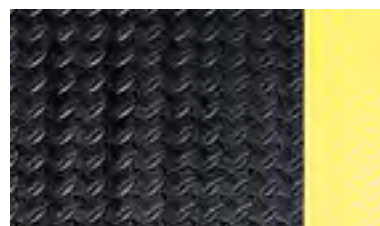
COLORS

#520 Pebble Surface: Black & Yellow, Black, Gray

#522 Deck-Top Surface: Black & Yellow, Black



#520 Foam-injected PVC pebble embossed surface



#522 Foam-injected PVC deck-top surface



Industrial grade foam

#410/#411/#430/#431 Tuff-Spun® Foot-Lover™

DRY AREA | GOOD

FEATURES

- Closed-cell PVC foam optimizes economical comfort and fatigue relief
- Beveled edges help reduce tripping hazards
- Use for service counters, mailrooms, cashier stations or warehousing/packaging stations

SPECIFICATIONS

Standard Sizes: 2' x 3' 3' x 5' 3' x 12'
27" x 3'*

Rolls: 2' x 60' 3' x 60' 4' x 60'
6' x 60'**

Total Customization: Up to 60'

Thickness: 3/8"
5/8"***

* Not available in 5/8" thickness

** Not available with yellow border

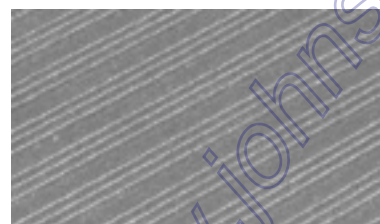
WARRANTY

1 Year

COLORS

#410, #430 Ribbed Surface:
Black & Yellow, Black, Gray

#411, #431 Pebble Surface:
Black & Yellow, Black, Gray



#410/#430 Ribbed embossed surface



#411/#431 Pebble embossed surface



Industrial grade foam

#680/#681 Safety-Step™ Perforated

WET / OILY AREA | PREMIUM

FEATURES

- Terra Cotta nitrile rubber blend offers resistance to a wide range of greases
- Heavy-duty modular rubber allows easy drainage of liquid and customization of sizes
- Use for factories, irregularly-sized work stations, standing stations, grinding stations or food service

SPECIFICATIONS

Standard Sizes: 3' x 3'

Total Customization: Up to 12' wide

Thickness: 5/8"

Finish: Beveled male/female ramps available

WARRANTY

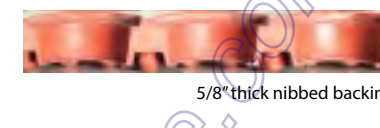
1 Year



#681 Nitrile Rubber Blend Terra Cotta (grease resistant, 15% recycled)



#680 Rubber Black (general purpose, 47% recycled)



5/8" thick nibbed backing

#645/#646 Safewalk-Light™

WET / OILY AREA | BEST

FEATURES

- Low profile mat with molded beveled borders for increased safety
- Raised surface rings provide excellent traction
- Use for bars / dishwashing areas, food processing / packaging or laundry rooms

SPECIFICATIONS

Standard Sizes: 3' x 5' 3' x 10'
3' x 15' 3' x 20'

10' length mats and longer have a seam every 5'

Total Customization: Unavailable

Thickness: 1/2"

WARRANTY

1 Year



#646 Nitrile Rubber Blend Terra Cotta (grease resistant)



#645 Rubber Black (general purpose)



1/2" Thick

#667 Sani-Tred™

WET AREA | BETTER

FEATURES

- Open-grid construction made from non-porous extruded PVC
- Sanitized anti-bacterial and anti-fungal additives
- Use for health clubs, showers, spas, swimming pools, saunas and Jacuzzis™ or where barefoot traffic is extensive

SPECIFICATIONS

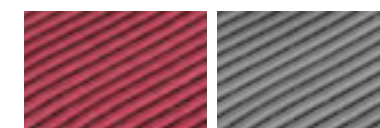
Rolls: 2' x 40' 3' x 40' 4' x 40'

Total Customization: Unavailable

Thickness: 3/8"

WARRANTY

1 Year



Mulberry Red

Charcoal Gray



Ocean Blue



Top view. Slip-resistant, embossed surface



3/8" Thick

#820 Pro-Tekt™

RUNNERS

FEATURES

- Economical, pebble-surfaced vinyl foam runner allows for a variety of uses
- Cost effective, slip-resistant and chemical-resistant floor protection

SPECIFICATIONS

Rolls: 3' x 60' 4' x 60' 6' x 60'

Total Customization: Length cuts up to 60'

WARRANTY 1 Year **COLORS** Black



1/8" Thick

#850 Deck Plate

RUNNERS

FEATURES

- Distinctive raised-diamond pattern increases traction and durability
- Easy-to-clean vinyl surface is resistant to most common chemicals

SPECIFICATIONS

Rolls: 2' x 75' 3' x 75' 4' x 75'

Total Customization: Length cuts up to 75'

WARRANTY 1 Year **COLORS** Black



5/32" Thick

#800 Sta-Kleen™

RUNNERS

FEATURES

- Industrial grade round-rib vinyl runner
- Surface resists normal acids, alkalis, oil, grease and most organic solvents, if removed quickly

SPECIFICATIONS

Rolls: 2' x 105' 3' x 105' 4' x 105'

Total Customization: Length cuts up to 105'

WARRANTY 1 Year **COLORS** Black



1/8" Thick

#840 Corrugated Rubber

RUNNERS

FEATURES

- Durable V-groove rubber surface is slip-resistant
- Resists abrasion

SPECIFICATIONS

Rolls: 2' x 75' 3' x 75'

Total Customization: Length cuts up to 75'

WARRANTY 1 Year **COLORS** Black



1/8" Thick

#871 Gym-Dandy™

RUNNERS

FEATURES

- Cost-effective PVC foam solution to protect floors during special events
- Simple to install with our Gym-Dandy™ Caddy #872 (sold separately)

SPECIFICATIONS

Rolls: 3' x 105' 4' x 105'

Total Customization: Length cuts up to 4' x 105'

WARRANTY 1 Year **COLORS** Black



1/8" Thick

Care and Maintenance

Use & Care Instructions – Entrance Matting

Regular maintenance of your mats is critical to extend mat life and appearance. It is recommended to develop a regular maintenance schedule. Frequency will depend on traffic and soil conditions.

INITIAL MAT USE

- 1| Within a few days of receipt, rolled mats should be unrolled and laid flat.
- 2| Normal shedding or “fuzzing” may occur with new carpet top mats. This will disappear after a few vacuumings.
- 3| Some rubber mats may have an oily or sticky film on them. This is a releasing agent that is inherent to molded mats, not a defect. Simply wash down with a mild detergent or degreaser to remove this film.
- 4| To store mats, roll them up and lay them in a dry area with moderate temperatures. Do not stand on end or crush.

PERIODIC INSPECTION

Periodic inspections are recommended on a regular basis to check for border tears. To repair a damaged border or area, glue the section together with cyanoacrylate ester type (super glue) adhesive.

CARPET MATS AND HDNP PRODUCTS

Entrance mats are used to capture dirt and debris before it can be tracked into a facility. However, mats must be cleaned regularly to extend their usefulness and appearance.

- 1| Vacuum daily
- 2| Hand wash or extract stains with a carpet spotter using a water-based carpet detergent or shampoo.
- 3| Periodically clean the mat with a carpet extractor using a water-based detergent or shampoo. Do not use solvent-based cleaners.
- 4| Excess water is removed by extracting or hanging the mat. Let the mat dry completely before allowing foot traffic to resume.

IMPORTANT! Do not use rotary scrubbers or other mechanical cleaners or scrubbers to clean.

Do not use solvents, pH detergents, or alkalis directly on the mat or use the mat in areas where these are used.

How to Order

With a global distribution network, it's easy to put the strength of our matting solutions to work for you. Visit www.CrownMats.com to find the Crown Matting Technologies distributor/rep nearest you. Or, simply call our customer service team at **800-MAT-LINE (628-5463)**. We welcome the opportunity to discuss our products, take your request for a sample, or answer any questions you may have.

Warranty

STANDARD LIMITED 1-YEAR WARRANTY POLICY

New products are warranted against defects in material and workmanship when maintained as instructed in the Use and Care Instructions included with each product. The obligation under this warranty is limited to the original user and to the replacement, repair, or pro-rated refund of said product. This warranty excludes the costs incurred for the installation of the carpet and/or mat. It remains the responsibility of the owner to carry out an inspection of the product prior to the installation.

This Warranty Is Not Applicable Under The Following Circumstances:

- 1| Improper use, application, installation or cleaning of the product
- 2| Normal wear
- 3| Use of this product for other than its intended purpose
- 4| Lack of proper maintenance as described in the Use and Care Instructions included with each product
- 5| Products that have been altered in any way

If a problem with a product develops during the warranty period, contact your authorized dealer.

Exceptions

Some products may have extended warranty periods. Please refer to the current catalog (available on our website) or pricelist for details.

Please go to www.CrownMats.com for additional warranty information.

Call if you do not see what you want
828-283-1999



T **800.628.5463** F 800.544.2806

T **419.332.5531** F 419.332.4180

2100 Commerce Drive

Fremont, Ohio 43420

U.S.A.

www.CrownMats.com

PRODUCTS AND THEIR RELATED DETAILS ARE SUBJECT
TO CHANGE. PLEASE CONTACT OUR CUSTOMER SERVICE
DEPARTMENT TO OBTAIN CURRENT INFORMATION.