



HAWK



Johnson Wholesale
1 (828) 283 1999

PERFORMANCE - RELIABILITY - SAFETY - VALUE



Let us save you money on equipment. We do not post our great pricing online. Call us today for your price.



HAWK ENTERPRISES OF ELKHART, INC

52744 Park Six Court - Elkhart Indiana 46514

www.hawkenterprises.com

HIGH QUALITY GREAT SAVINGS

www.johnson-wholesale.com

Table of Contents

Brush Cover Colors	Page 3
Eyas	Page 4
Mighty Hawk	Page 6
Standard	Page 8
Flight	Page 10
Wingspan	Page 12
2-Speed	Page 14
Xtra Heavy Duty	Page 16
Brute	Page 18
Pro	Page 21
Osprey	Page 23
Merlin	Page 26
Raptor	Page 29
TigerHawks	Page 31
Burnishers	Page 38
Black Hawks	Page 56
Propane	Page 60
Air Movers	Page 62
Harrier Back Pack Vacuum	Page 72
Wet/Dry Vacuums	Page 74
Extractors	Page 78
Talon	page 80
Accessories	Page 82



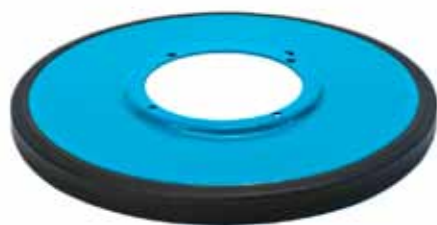
RED
HAMMER



BLACK
WRINKLE



TEAL
PEEL



MOODY BLUE
PEEL



SILVER
HAMMERTONE
PEEL



ORANGE
PEEL



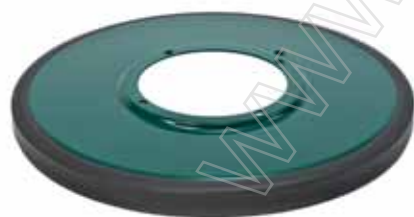
OCEAN BLUE
PEEL



SANBAR
PEEL



GARNET
PEEL



HUNTER GREEN
PEEL



CHROME
PLATED



BLACK
PLASTIC
WRINKLE



Hawk Eyas Floor Machine



Machine operators will appreciate the solid performance of these extremely well-built floor machines that deliver on every job. Their consistently unsurpassed performance makes them the top choice for floor cleaning challenges.

Features

- Extremely quiet, dual reduction, multi-groove belt drive
- Premium start/run-capacitor, 56 frame, TEFC (totally enclosed fan cooled) motor for reliability
- 50-foot power cord with molded plug
- All steel construction for superior strength and longevity
- 1-year warranty
- Thumb-operated safety switch
- Negative pressure on/off switch
- Dual steel operating triggers for left- or right-hand operation
- Two-piece, heavy-duty, telescoping steel handle for optimum flexibility and operator comfort
- Welded frame for rugged, reliable performance
- Non-marking, 5" ball bearing wheels
- Variable position positive lock handle and vinyl grips for operator comfort and safety
- 360-degree wraparound bumper -- no tools needed for replacement



UL/CUL Approved
Machine



Technical Specifications

Model #	EYAS10	EYAS13	EYAS15
Part #	F0010-10	F0010-13	F0010-15
Pad Size	10 inch	13 inch	15 inch
Power Source*	115V 50/60Hz	115V 50/60Hz	115V 50/60Hz
Motor/HP	56 Frame, 1/2 HP Single Capacitor (Start//Run)	56 Frame, 1/2 HP Single Capacitor (Start//Run)	56 Frame, 1/2 HP Single Capacitor (Start//Run)
Amp Draw***	6.7	6.7	6.7
Belt Drive	Dual Reduction, Multigroove	Dual Reduction, Multigroove	Dual Reduction, Multigroove
Brush Rpm	175	175	175
Cord	50' 16-3 SJT	50' 16-3 SJT	50' 16-3 SJT
Weight	54 lbs	56 lbs	56 lbs
Shipping Weight	60 lbs	62 lbs	62 lbs

***230V Available**

****** Amp Draw with Appropriate Pad Driver**

dB Rating: 56 Meets GS42 Requirements
Specifications subject to change without notice.

Accessories for Every Application

Model #	EYAS10	EYAS13	EYAS 15
Pad Driver	A0047M	A0017	A0034-1
Nylon Brush	A0048	A0016	A0037
Poly Brush	A0049	A0020	A0036
Polish Brush	A0050	A0021	A0035
Grit Brush	A0051	A0018	A0038
Polish (Hogs Hair) Pads (5 Per Case)	A0025-10P-CS	A0025-13P-CS	A0025-15P-CS
Scrub (Red) Pads (5 Per Case)	A0026-10R-CS	A0026-13R-CS	A0026-15R-CS
Strip (Black) Pads (5 Per Case)	A0027-10BK-CS	A0027-13BK-CS	A0027-15BK-CS
2-Gallon Solution Tank	A0001-EYASBLK2	A0001-EYASBLK2	A0001-EYASBLK2
Optional Cord Hook	HP0004-SQCUT-BLACK	HP0004-SQCUT-BLACK	HP0004-SQCUT-BLACK

Hawk Enterprises, Inc.

52744 Park Six Court,
Elkhart, IN 46514

Distributed By:

Toll Free Phone (888) 289-4295 Local Phone (574) 294-1910
Toll Free Fax (866) 429-5329 Local Fax (574) 970-0289

Mighty Hawk



ELKHART, IN

Everyone will appreciate the performance, versatility and value of the Mighty Hawk Floor Machine. The .5 HP AC motor and dual planetary gears deliver maintenance free power in a small manageable package. It's ideal for use in tight places, such as stairs, landings, restrooms, showers, and for edging. Mighty Hawk is available in 10", 13", and 15" sizes to fit your job.

Features

- | | |
|---|---|
| <ul style="list-style-type: none"> • Twin idler planetary steel helical-cut gear drives • Industrial cord with molded plug for long-lasting value • All steel construction for superior strength and longevity • Thumb-operated safety switch • Negative pressure on/off switch • Dual steel operating triggers for left- or right-hand operation | <ul style="list-style-type: none"> • One-piece heavy duty steel handle for optimum durability • Welded frame for rugged, reliable performance • Non-marking, 5" ball bearing wheels • Comfortable vinyl handle grips for ease of use • 360-degree wraparound bumper -- no tools needed for replacement |
|---|---|



Technical Specifications

Model #	MIGHTY10	MIGHTY13	MIGHTY15
Part #	F0060-10	F0060-13	F0060-15
Pad Size	10 inch	13 inch	15 inch
Power Source*	115V 50/60Hz	115V 50/60Hz	115V 50/60Hz
Motor/HP	56 Frame, 1/2 HP Single Capacitor (Start//Run)	56 Frame, 1/2 HP Single Capacitor (Start//Run)	56 Frame, 1/2 HP Single Capacitor (Start//Run)
Amp Draw***	6.7	6.9	7.3
Brush Rpm	175	175	175
Cord	50' 16-3 SJT	50' 16-3 SJT	50' 16-3 SJT
Weight	61 lbs	63 lbs	66 lbs
Shipping Weight	66 lbs	68 lbs	71 lbs

***230V Available**

****** Amp Draw with Appropriate Pad Driver**

dB Rating: 64 Meets GS42 Requirements

Specifications subject to change without notice.

Accessories for Every Application

Model #	MIGHTY 10	MIGHTY 13	MIGHTY 15
Pad Driver	A0047M	A0017	A0034
Nylon Brush	A0048	A0016	A0037
Poly Brush	A0049	A0020	A0036
Polish Brush	A0050	A0021	A0035
Grit Brush	A0051	A0018	A0038
Polish (Hogs Hair) Pads (5 Per Case)	A0025-10P-CS	A0025-13P-CS	A0025-15P-CS
Scrub (Red) Pads (5 Per Case)	A0026-10R-CS	A0026-13R-CS	A0026-15R-CS
Strip (Black) Pads (5 Per Case)	A0027-10BK-CS	A0027-13BK-CS	A0027-15BK-CS
2.5-Gallon Solution Tank	A0001-RAPBLK2.5	A0001-RAPBLK2.5	A0001-RAPBLK2.5
Optional Cord Hook	HP0004-SQCUT-BLACK	HP0004-SQCUT-BLACK	HP0004-SQCUT-BLACK

Hawk Enterprises, Inc.

52744 Park Six Court,
Elkhart, IN 46514

Distributed By:

Toll Free Phone (888) 289-4295 Local Phone (574) 294-1910
Toll Free Fax (866) 429-5329 Local Fax (574) 970-0289



Hawk Standard Floor Machine



Realize maximum power with the twin capacitor, black AC motor and Hawk's ruggedly reliable floor machine design! Machine operators will appreciate the solid performance of the extremely well-built floor machines that deliver on every job they tackle. The consistently unsurpassed performance of these floor machines makes them the top choice for floor cleaning challenges.

Features

- | | |
|---|---|
| <ul style="list-style-type: none"> • Triple idler planetary steel helical-cut gear drives • Industrial cord with molded plug for long-lasting value • All steel construction for superior strength and longevity • UL/CUL - approved for safe performance • Thumb-operated safety switch • Negative pressure on/off switch • Dual steel operating triggers for left- or right-hand operation | <ul style="list-style-type: none"> • One-piece chrome, heavy duty steel handle for optimum durability • Welded frame for rugged, reliable performance • Non-marking, 5" ball bearing wheels • Variable position positive lock handle and vinyl grips for operator comfort and safety • 360-degree wraparound bumper -- no tools needed for replacement |
|---|---|



UL/CUL Approved
Machine



H

A

W

K

Technical Specifications

9

Model #	HP1513HD	HP1515HD	HP1517HD	HP1520HD
Part #	F0013	F0006	F0009	F0012
Pad Size	13 inch	15 inch	17 inch	20 inch
Power Source*	115V 60Hz	115V 60Hz	115V 60Hz	115V 60Hz
Motor/HP	66 Frame 1.5 Hp Dual Capacitor Motor	66 Frame 1.5 Hp Dual Capacitor Motor	66 Frame 1.5 Hp Dual Capacitor Motor	66 Frame 1.5 Hp Dual Capacitor Motor
Amp Draw	5.3	5.7	5.9	6.5
Gear Box	3-Idler 10:1	3-Idler 10:1	3-Idler 10:1	3-Idler 10:1
Brush Rpm	175	175	175	175
Cord **/**	50' 14-3 STO	50' 14-3 STO	50' 14-3 STO	50' 14-3 STO
Weight	88 lbs	91 lbs	94 lbs	97 lbs
Shipping Weight	100 lbs	103 lbs	106 lbs	109 lbs

*230V Available ** 75' Cord Available (12-3) ***100' Cord Available (14-3)

**** Amp Draw with Appropriate Pad Driver

dB Rating: 60 Meets GS42 Requirements

Specifications subject to change without notice.

Accessories for Every Application

Model #	HP1513HD	HP1515HD	HP1517HD	HP1520HD
Pad Driver	A0017	A0034	A0010	A0011
Polish Brush	A0021	A0035	A0004	A0005
Poly Brush	A0020	A0036	A0002	A0003
Nylon Brush	A0016	A0037	A0006	A0007
Grit Brush	A0018	A0038	A0008	A0009
Polish (Hogs Hair) Pads (5 Per Case)	A0025-13P-CS	A0025-15P-CS	A0025-17P-CS	A0025-20P-CS
Scrub (Red)Pads (5 Per Case)	A0026-13R-CS	A0026-15R-CS	A0026-17R-CS	A0026-20R-CS
Strip (Black) Pads (5 Per Case)	A0027-13BK-CS	A0027-15BK-CS	A0027-17BK-CS	A0027-20BK-CS
4-Gallon Solution Tank	Available in 7 colors	Available in 7 colors	Available in 7 colors	Available in 7 colors

Hawk Enterprises, Inc.

52744 Park Six Court,
Elkhart, IN 46514

Distributed By:

Toll Free Phone (888) 289-4295 Local Phone (574) 294-1910
Toll Free Fax (866) 429-5329 Local Fax (574) 970-0289

Hawk Flight



ELKHART, IN



The Hawk Flight is built with a low-profile front end, designed with a unique 10 inches of low profile clearance in front of the motor. Getting under furniture, shelving, cabinet kicks, and other low or hard to reach places is now within reach. Flight is available in three sizes 13", 15", and 17" to accommodate a wide variety of jobs. Made to deliver years of dependable service.

Features

- | | |
|---|---|
| <ul style="list-style-type: none"> • Quiet synchronous cog belt drive • Premium start/run-capacitor, 56 frame, TEFC (totally enclosed fan cooled) motor for reliability • 50-foot power cord with molded plug • All steel construction for superior strength and longevity • 1-year warranty • Thumb-operated safety switch • Negative pressure on/off switch • Dual steel operating triggers for left- or right-hand operation | <ul style="list-style-type: none"> • One-piece, heavy duty, foldable steel handle for optimum flexibility • Welded frame for rugged, reliable performance • Non-marking, 5" ball bearing wheels • 180-degree position positive lock handle for operator comfort and safety • Comfortable vinyl handle grips for ease of use • 360-degree wraparound-and-under snug fit bumper - no tools needed for replacement |
|---|---|



Technical Specifications

Model #	Flight 13	Flight 15	Flight 17
Part #	F0060-13	F0060-15	F0060-17
Pad Size	13 inch	15 inch	17 inch
Power Source*	115V 50/60Hz	115V 50/60Hz	115V 50/60Hz
Motor/HP	56 Frame, 1 HP Single Capacitor (Start//Run)	56 Frame, 1 HP Single Capacitor (Start//Run)	56 Frame, 1 HP Single Capacitor (Start//Run)
Amp Draw***	8.1	8.4	8.9
Belt Drive	Synchronous Belt	Synchronous Belt	Synchronous Belt
Brush Rpm	280	280	280
Cord	50' 16-3 SJT	50' 16-3 SJT	50' 16-3 SJT
Weight	55 lbs	57 lbs	61 lbs
Shipping Weight	60 lbs	63 lbs	66 lbs

***230V Available**

****** Amp Draw with Appropriate Pad Driver**

dB Rating: 56 Meets GS42 Requirements

Specifications subject to change without notice.

Accessories for Every Application

Model #	Flight 13	Flight 15	Flight 17
Pad Driver	A0017	A0034-1	A0010
Nylon Brush	A0016	A0037	A0004
Poly Brush	A0020	A0036	A0002
Polish Brush	A0021	A0035	A0006
Grit Brush	A0018	A0038	A0008
Polish (Hogs Hair) Pads (5 Per Case)	A0025-13P-CS	A0025-15P-CS	A0025-17P-CS
Scrub (Red) Pads (5 Per Case)	A0026-13R-CS	A0026-15R-CS	A0026-17R-CS
Strip (Black) Pads (5 Per Case)	A0027-13BK-CS	A0027-15BK-CS	A0027-17BK-CS
2.5-Gallon Solution Tank	A0001-RAPBLK2.5	A0001-RAPBLK2.5	A0001-RAPBLK2.5
Optional Cord Hook	HP0004-SQCUT-BLACK	HP0004-SQCUT-BLACK	HP0004-SQCUT-BLACK

Hawk Enterprises, Inc.

52744 Park Six Court,
Elkhart, IN 46514

Distributed By:

Toll Free Phone (888) 289-4295 Local Phone (574) 294-1910
Toll Free Fax (866) 429-5329 Local Fax (574) 970-0289



The Wingspan



ELKHART, IN



Big jobs are no problem with the Wingspan 29" wide area floor machine. Two 15" heads work in harmony to scrub, strip, or polish a 29" path quickly and effortlessly. Cut labor in half and still not break the budget with expensive automatic equipment. The Wingspan's unique design provides Forward Assist, a first of its kind in hand-held scrubbers.



Technical Specifications

Model #	WingSpan
Part #	F0061-29
Pad Size	2 - 15 inch
Power Source*	115V 50/60Hz
Motor/HP	2 - .5 HP Counter Rotating
Cord	2 - Piece Cord/ 100' 12/3 Power Cord
Tank	4-Gallon Professional Series Tank
Wheels	2X8 Inch Ball Bearing Wheels
Brush Cover	Black HMW Plastic Brush Cover
Weight	134 lbs
Shipping Weight	166 lbs

Hawk Enterprises, Inc.

52744 Park Six Court,
Elkhart, IN 46514

Distributed By:

Toll Free Phone (888) 289-4295 Local Phone (574) 294-1910
Toll Free Fax (866) 429-5329 Local Fax (574) 970-0289



H

A

W

K



UL/CUL Approved
Machine

Hawk 2-Speed Floor Machine



2-speed machines perform heavy duty scrubbing and stripping at the standard 175 Rpm speed. With the flip of a conveniently located toggle switch, get professional high-gloss buffing results at 320 rpm. You'll double your productivity potential with 2-speed floor machines.

Features

- | | |
|---|---|
| <ul style="list-style-type: none"> • Placement of the Hi-Lo speed control switch optimizes operating ease • Heavy duty cord with molded plug for long-lasting value • Steel brush covers are strong and durable • Planetary steel helical-cut gear drive for superior reliability • UL/CUL - approved for safe performance • Thumb-operated safety switch • Negative pressure on/off switch • Dual steel operating triggers for left- or right-hand operation | <ul style="list-style-type: none"> • One-piece chrome, heavy duty steel handle for optimum durability • Welded frame for rugged, reliable performance • Non-marking, 5" ball bearing wheels • Variable position positive lock handle and vinyl grips for operator comfort and safety • 360-degree wraparound bumper -- no tools needed for replacement |
|---|---|



Technical Specifications

Model #	HP1513-2S	HP1515-2S	HP1517-2S	HP1520-2S
Part #	F0003-13	F0003-15	F0003-17	F0003-20
Pad Size	13 inch	15 inch	17 inch	20 inch
Power Source*	115V 50/60Hz	115V 50/60Hz	115V 50/60Hz	115V 50/60Hz
Motor/HP	66 Frame, 1-1/2 HP DC Rectified	66 Frame, 1-1/2 HP DC Rectified	66 Frame, 1-1/2 HP DC Rectified	66 Frame, 1-1/2 HP DC Rectified
Amp Draw (Low / High)****	7.8 / 8.2	8.1 / 8.5	8.5 / 9.1	9.2 / 9.6
Gear Box	3-Idler 10:1	3-Idler 10:1	3-Idler 10:1	3-Idler 10:1
Brush Rpm (Low / High)	175 / 320	175 / 320	175 / 320	175 / 320
Cord**/**	50' 14-3 STO	50' 14-3 STO	50' 14-3 STO	50' 14-3 STO
Weight	80	82	84	88
Shipping Weight	92	94	96	102

*230V Available ** 75' Cord Available (12-3) ***100' Cord Available (14-3)

**** Amp Draw with Appropriate Pad Driver

dB Rating: Low Speed -62 High Speed - 69 Meets GS42 Requirements

Specifications subject to change without notice.

Accessories for Every Application

Machine Part #	F0003-13	F0003-15	F0003-17	F0003-20
Pad Driver	A0017	A0034	A0010	A0011
High Speed Pad Driver	N/A	A0034-1	A0010-3	A0011-1
Polish Brush	A0021	A0035	A0004	A0005
Poly Brush	A0020	A0036	A0002	A0003
Nylon Brush	A0016	A0037	A0006	A0007
Grit Brush	A0018	A0038	A0008	A0009
Polish (Hogs Hair) Pads (5 Per Case)	A00025-13P-CS	A0025-15P-CS	A0025-17P-CS	A0025-20P-CS
Scrub (Red) Pads (5 Per Case)	A0026-13R-CS	A0026-15R-CS	A0026-17R-CS	A0026-20R-CS
Strip (Black) Pads (5 Per Case)	A0027-13BK-CS	A0027-15BK-CS	A0027-17BK-CS	A0027-20BK-CS
4 Gallon Solution Tank	Available in 7 colors	Available in 7 colors	Available in 7 colors	Available in 7 colors

Hawk Enterprises, Inc.

52744 Park Six Court,
Elkhart, IN 46514

Distributed By:

Toll Free Phone (888) 289-4295 Local Phone (574) 294-1910
Toll Free Fax (866) 429-5329 Local Fax (574) 970-0289



Hawk Xtra Heavy Duty Floor Machine



ELKHART, IN



Optional 20#
Frame Weight
A0032-2P

When the job gets tough, the tough get going with Hawk's Xtra heavy duty floor machines. Maximum power is obtained by utilization of a 1.5 HP, twin capacitor motor driving an XHD 11:1 gearbox. With a wide range of accessories and optional weights, there's no job these machines can't handle.

Features

- | | |
|---|---|
| <ul style="list-style-type: none"> • Virtually indestructible gearbox • Industrial cord with molded plug for long-lasting value • UL/CUL - approved for safe performance • Thumb-operated safety switch • Negative pressure on/off switch • Dual steel operating triggers for left- or right-hand operation • One-piece chrome, heavy duty steel handle for optimum durability | <ul style="list-style-type: none"> • Welded frame for rugged, reliable performance • Non-marking, 5" ball bearing wheels • Variable position positive lock handle and vinyl grips for operator comfort and safety • 360-degree wraparound bumper -- no tools needed for replacement |
|---|---|



UL/CUL Approved
Machine



Technical Specifications

Model #	HP1513XHD	HP1515XHD	HP1517XHD	HP1520XHD
Part #	F0013XHD	F0006XHD	F0009XHD	F0012XHD
Pad Size	13 inch	15 inch	17 inch	20 inch
Power Source*	115V 60Hz	115V 60Hz	115V 60Hz	115V 60Hz
Motor/HP	66 Frame, 1-1/2 HP Dual Capacitor Motor	66 Frame, 1-1/2 HP Dual Capacitor Motor	66 Frame, 1-1/2 HP Dual Capacitor Motor	66 Frame, 1-1/2 HP Dual Capacitor Motor
Amp Draw****	5.3	5.3	6.1	6.8
Gear Box	3-Idler 11:1	3-Idler 11:1	3-Idler 11:1	3-Idler 11:1
Brush Rpm	165	165	165	165
Cord**/**	50' 14-3 STO	50' 14-3 STO	50' 14-3 STO	50' 14-3 STO
Weight	87 lbs	90 lbs	94 lbs	98 lbs
Shipping Weight	100 lbs	103 lbs	107 lbs	111 lbs

*230V Available ** 75' Cord Available (12-3) ***100' Cord Available (14-3)

**** Amp Draw with Appropriate Pad Driver

dB Rating: 60 Meets GS42 Requirements

Specifications subject to change without notice.

Accessories for Every Application

Model #	HP1513XHD	HP1515XHD	HP1517XHD	HP1520XHD
Pad Driver	A0017	A0034	A0010	A0011
Orbitec Driver	HP0018	N/A	HP0017	HP0020
Sand Paper Driver	N/A	N/A	A0014-HD	A0014-1HD
Surface Prep Tool	HP0035	N/A	HP0033	HP0034
Diamond Pad Driver	A0017DPD	A0034DPD	A0010DPD	A0011DPD
Weighted DPD	A0017WTDPD	A0034WTDPD	A0010WTDPD	A0011WTDPD
Polish Brush	A0021	A0035	A0004	A0005
Poly Brush	A0020	A0036	A0002	A0003
Nylon Brush	A0016	A0037	A0006	A0007
Grit Brush	A0018	A0038	A0008	A0009
Polish (Hogs Hair) Pads (5 Per Case)	A00025-13P-CS	A0025-15P-CS	A0025-17P-CS	A0025-20P-CS
Scrub (Red) Pads (5 Per Case)	A0026-13R-CS	A0026-15R-CS	A0026-17R-CS	A0026-20R-CS
Strip (Black) Pads (5 Per Case)	A0027-13BK-CS	A0027-15BK-CS	A0027-17BK-CS	A0027-20BK-CS
4-Gallon Solution Tank	Available in 7 colors	Available in 7 colors	Available in 7 colors	Available in 7 colors

Hawk Enterprises, Inc.

52744 Park Six Court,
Elkhart, IN 46514

Distributed By:

Toll Free Phone (888) 289-4295 Local Phone (574) 294-1910
Toll Free Fax (866) 429-5329 Local Fax (574) 970-0289



Hawk BRUTE Floor Machine with 180-Frame TEFC Motor



(BRUTE)



(TEXHD)



ELKHART, IN

The Brute is equipped with a severe duty, planetary triple-idler, all steel helical-cut gear drive, with steel coupler and an exclusive 180 frame TEFC (totally enclosed fan cooled) motor. TEFC units are ideal for the harshest conditions – dust, moisture, chemicals – and great for sanding, screening, stone care, concrete work, and other applications that require “Brute Force.”

Note: These units are NOT equipped with an explosion-proof motor.

Features

- | | |
|--|---|
| <ul style="list-style-type: none"> • Twin (dual) capacitor 180-frame TEFC (totally enclosed fan cooled) motor keeps out dirt, dust, and moisture for longer motor life • Virtually indestructible 11:1 gearbox • Industrial cord with molded plug • Low current draw • UL/CUL - approved for safe performance • Thumb-operated safety switch • Negative pressure on/off switch • Dual steel operating triggers for left- or right-hand operation | <ul style="list-style-type: none"> • One-piece chrome, heavy duty steel handle for optimum durability • Welded frame for rugged, reliable performance • Non-marking, 5” ball bearing wheels • Variable position positive lock handle and vinyl grips for operator comfort and safety • 360-degree wraparound bumper -- no tools needed for replacement |
|--|---|



UL/CUL Approved
Machine



H

A

W

K

Technical Specifications

Model #	HP1513-180BRUTE	HP1515-180BRUTE	HP1517-180BRUTE	HP1520-180BRUTE
Part #	F0013-180CP	F0006-180CP	F0009-180CP	F0012-180CP
Pad Size	13 inch	15 inch	17 inch	20 inch
Power Source*	115V 60Hz	115V 60Hz	115V 60Hz	115V 60Hz
Motor/HP	180 Frame, 1-1/2 HP TEFC AC Dual Capacitor Motor	180 Frame, 1-1/2 HP TEFC AC Dual Capacitor Motor	180 Frame, 1-1/2 HP TEFC AC Dual Capacitor Motor	180 Frame, 1-1/2 HP TEFC AC Dual Capacitor Motor
Amp Draw	7.2	7.5	7.9	8.4
Gear Box	3-Idler 11:1	3-Idler 11:1	3-Idler 11:1	3-Idler 11:1
Brush Rpm	165	165	165	165
Cord**/**	50' 12-3 STJOW	50' 12-3 STJOW	50' 12-3 STJOW	50' 12-3 STJOW
Weight	113 lbs	117 lbs	123 lbs	125 lbs
Shipping Weight	120 lbs	124 lbs	130 lbs	132 lbs

*230V Available ** 75' Cord Available (12-3) ***100' Cord Available (12-3)

**** Amp Draw with Appropriate Pad Driver

dB Rating: 66 Meets GS42 Requirements

Specifications subject to change without notice.

Model #	HP1513-TEXHD	HP1515-TEXHD	HP1517-TEXHD	HP1520-TEXHD
Part #	F0013-180TEXHD	F0006-180TEXHD	F0009-180TEXHD	F0012-180TEXHD
Pad Size	13 inch	15 inch	17 inch	20 inch
Power Source*	115V 60Hz	115V 60Hz	115V 60Hz	115V 60Hz
Motor/HP	180 Frame, 1-1/2 HP TEFC AC Dual Capacitor Black Motor	180 Frame, 1-1/2 HP TEFC AC Dual Capacitor Black Motor	180 Frame, 1-1/2 HP TEFC AC Dual Capacitor Black Motor	180 Frame, 1-1/2 HP TEFC AC Dual Capacitor Black Motor
Amp Draw	7.2	7.5	7.9	8.4
Gear Box	3-Idler 11:1	3-Idler 11:1	3-Idler 11:1	3-Idler 11:1
Brush Rpm	165	165	165	165
Cord**/**	50' 12-3 STJOW	50' 12-3 STJOW	50' 12-3 STJOW	50' 12-3 STJOW
Weight	113 lbs	117 lbs	123 lbs	125 lbs
Shipping Weight	120 lbs	124 lbs	130 lbs	132 lbs

Weight Options



A0032-1P -- Optional 25# Horseshoe Weights (each)
A0032-3P -- Optional 36# Horseshoe Weights (each)

A0032-2P
20# Frame Weight



HP0008-45IN BRUTE
Motor Mounted Weight Post Kit



A0028-10P--
10# Hexigonal weight
A0028-25P--
25# Hexigonal weight





H

A

W

K


**Hawk Scrapers
(Surface Prep):**

13"	HP0035
15"	N/A
17"	HP0033
20"	HP0034


**Orbitec Diamond
Driver:**

13"	HP0018
15"	N/A
17"	HP0017-3
20"	HP0020-3


**Weighted Diamond
Pad Driver:**

13"	A0017WTDPD (25#)
15"	N/A
17"	A0010WTDPD (46#)
20"	A0011WTDPD (64#)


**Diamond Pad
Driver**

13"	A0017DPD
17"	A0010DPD
20"	A0011DPD


Pad Driver:

13"	A0017
15"	A0034
17"	A0010
20"	A0011


Grit Brush:

13"	A0018
15"	A0038
17"	A0008
20"	A0009


Sand Paper Driver:

13"	N/A
15"	N/A
17"	A0014-HD
20"	A00014-1HD



A0001-BLK4
A0001-CHAR4
A0001-DKBLUE4
A0001-LTBLUE4
A0001-NAT4
A0001-RED4
A0001-YEL4

A0001-BLK4



Dust Pickup System
HP0031-DC17BRUTEKIT
HP0031-DC20-BRUTEKIT



Power Lock Kit
HP0005-BLACK

3" DIAMONDS	30	50	100	120	200	220	400	800	1500	1800	3000	3500	8500
Rosox Resin	X	X					X	X		X		X	X
Turbo Cat	X	X	X		X								
Typhoon	X	X		X		X	X	X				X	X
Concrete Flex	X	X	X		X		X	X	X		X		
Granite Polish	X	X	X		X		X	X	X		X		
Marble Flex		X	X		X		X	X	X				

Hawk Enterprises, Inc.

52744 Park Six Court,
Elkhart, IN 46514

Distributed By:

Toll Free Phone (888) 289-4295 Local Phone (574) 294-1910
Toll Free Fax (866) 429-5329 Local Fax (574) 970-0289



H

A

W

K

Hawk Pro Machine



Pad Driver



Splash Guard

The Hawk Pro was manufactured with the professional in mind. Hawk Pro handles a wide variety of severe duty work as well as the easier daily chores of scrubbing and stripping. The 180-frame TEFC motor and hardened steel gears are the backbone behind this piece which will serve in the commercial environment for decades. The Pro features include an ergonomic upper handle lock, no-spill solution tank, driver, and custom splash guard.

Features

- | | |
|--|---|
| <ul style="list-style-type: none"> • Twin (dual) capacitor 180-frame TEFC (totally enclosed fan cooled) motor keeps out dirt, dust, and moisture for longer motor life • Virtually indestructible 11:1 gearbox • Industrial cord with molded plug • Low current draw • UL/CUL - approved for safe performance • Thumb-operated safety switch • Negative pressure on/off switch • Dual steel operating triggers for left- or right-hand operation | <ul style="list-style-type: none"> • One-piece chrome, heavy duty steel handle for optimum durability • Welded frame for rugged, reliable performance • Non-marking, 5" ball bearing wheels • Variable position, positive-lock handle is ergonomic for operator comfort and safety • Comfortable vinyl handle grips for ease of use • 360-degree wraparound bumper -- no tools needed for replacement |
|--|---|



H

A

W

K

Model #	HP1513-180PRO	HP1515-180PRO	HP1517-180PRO	HP1520-180PRO
Part #	F0013-180PRO	F0006-180PRO	F0009-180PRO	F0012-180PRO
Pad Size	13 inch	15 inch	17 inch	20 inch
Power Source*	115V 60Hz	115V 60Hz	115V 60Hz	115V 60Hz
Motor/HP	180 Frame, 1-1/2 HP TEFC AC Dual Capacitor Black Motor	180 Frame, 1-1/2 HP TEFC AC Dual Capacitor Black Motor	180 Frame, 1-1/2 HP TEFC AC Dual Capacitor Black Motor	180 Frame, 1-1/2 HP TEFC AC Dual Capacitor Black Motor
Amp Draw	7.2	7.5	7.9	8.4
Gear Box	3-Idler 11:1	3-Idler 11:1	3-Idler 11:1	3-Idler 11:1
Brush Rpm	165	165	165	165
Cord**/**	50' 12-3 STJOW	50' 12-3 STJOW	50' 12-3 STJOW	50' 12-3 STJOW
Weight	113 lbs	117 lbs	123 lbs	125 lbs
Shipping Weight	120 lbs	124 lbs	130 lbs	132 lbs

*230V Available ** 75' Cord Available (12-3) ***100' Cord Available (14-3)

**** Amp Draw with Appropriate Pad Driver

dB Rating: 60 Meets GS42 Requirements
Specifications subject to change without notice.

Accessories for Every Application

Model #	HP1513-180PRO	HP1515-180PRO	HP1517-180PRO	HP1520-180PRO
Pad Driver	A0017	A0034	A0010	A0011
Polish Brush	A0021	A0035	A0004	A0005
Poly Brush	A0020	A0036	A0002	A0003
Nylon Brush	A0016	A0037	A0006	A0007
Grit Brush	A0018	A0038	A0008	A0009
Polish (Hogs Hair) Pads (5 Per Case)	A0025-13P	A0025-15P	A0025-17P	A0025-20P
Scrub (Red) Pads (5 Per Case)	A0026-13R	A0026-15R	A0026-17R	A0026-20R
Strip (Black) Pads (5 Per Case)	A0027-13BK	A0027-15BK	A0027-17BK	A0027-20BK
4-Gallon Solution Tank	Available in 7 colors	Available in 7 colors	Available in 7 colors	Available in 7 colors

Hawk Enterprises, Inc.
Elkhart, IN 46514

Distributed By:

Toll Free Phone (888) 289-4295 Local Phone (574) 294-1910
Toll Free Fax (866) 429-5329 Local Fax (574) 970-0289



The Osprey



The Osprey is an all-surface restoration machine. The versatility of this unit spans carpet, vinyl, stone, ceramic tile, wood, concrete, and natural stone. The built-in 45 PSI solution pump is controlled through a convenient handle switch. The adjustable 60-degree spray nozzle puts the precise amount of cleaning solution where its needed there by reducing moisture and chemical usage. The 180-frame TEFC motor, hardened steel gears, and no-spill solution tank make the Osprey the best machine for all surface restoration needs.

Features

- | | |
|---|---|
| <ul style="list-style-type: none"> • Twin (dual) capacitor 180-frame TEFC (totally enclosed fan cooled) motor keeps out dirt, dust, and moisture for longer motor life. • Virtually indestructible 11:1 gearbox • Industrial cord with molded plug. • Low current draw • Thumb-operated safety switch • Negative pressure on/off switch • Dual steel operating triggers for left- or right-hand operation • 45 PSI pump • 1/4 GPM 60° spray nozzle | <ul style="list-style-type: none"> • One-piece chrome, heavy duty steel handle for optimum durability • Welded frame for rugged, reliable performance • Non-marking, 5" ball bearing wheels • Variable position positive lock handle and vinyl grips for operator comfort and safety • 360-degree wraparound bumper -- no tools needed for replacement |
|---|---|

Technical Specifications





Model #	HP1513-180 OSPNEY	HP1515-180 OPNEY	HP1517-180 OSPNEY	HP1520-180 OSPNEY
Part #	F0013-OSPNEY	F0006-OSPNEY	F0009-OSPNEY	F0012-OSPNEY
Pad Size	13 inch	15 inch	17 inch	20 inch
Power Source*	115V 60Hz	115V 60Hz	115V 60Hz	115V 60Hz
Motor/HP	180 Frame, 1-1/2 HP TEFC AC Dual Capacitor Motor	180 Frame, 1-1/2 HP TEFC AC Dual Capacitor Motor	180 Frame, 1-1/2 HP TEFC AC Dual Capacitor Motor	180 Frame, 1-1/2 HP TEFC AC Dual Capacitor Motor
Amp Draw	7.2	7.5	7.9	8.4
Gear Box	3-Idler 11:1	3-Idler 11:1	3-Idler 11:1	3-Idler 11:1
Brush Rpm	165	165	165	165
Cord**/**	50' 12-3 STJOW	50' 12-3 STJOW	50' 12-3 STJOW	50' 12-3 STJOW
Weight	113 lbs	117 lbs	123 lbs	125 lbs
Shipping Weight	120 lbs	124 lbs	130 lbs	132 lbs

*230V Available ** 75' Cord Available (12-3) ***100' Cord Available (12-3)

**** Amp Draw with Appropriate Pad Driver

dB Rating: 66 Meets GS42 Requirements
Specifications subject to change without notice.

Weight Options

	A0032-2P 20# Frame Weight		HP0008-45IN BRUTE Motor Mounted Weight Post Kit
A0032-1P -- Optional 25# Horseshoe Weights (each) A0032-3P -- Optional 36# Horseshoe Weights (each)		A0028-10P-- 10# Hexigonal weight A0028-25P-- 25# Hexigonal weight	



Hawk Scrapers (Surface Prep):

13"	HP0035
15"	N/A
17"	HP0033
20"	HP0034



Orbitec Diamond Driver:

13"	HP0018
15"	N/A
17"	HP0017
20"	HP0020



Weighted Diamond Pad Driver:

13"	A0017WTDPD (25#)
15"	N/A
17"	A0010WTDPD (46#)
20"	A0011WTDPD (64#)



H

A

W

K

**Diamond Pad****Driver**

13"	A0017DPD
17"	A0010DPD
20"	A0011DPD

**Pad Driver:**

13"	A0017
15"	A0034
17"	A0010
20"	A0011

**Tufted Pad****Driver:**

17"	A0010-3?
20"	A0011-3

**Grit Brush:**

13"	A0018
15"	A0038
17"	A0008
20"	A0009

**Sand Paper Driver:**

13"	N/A
15"	N/A
17"	A0014-HD
20"	A00014-1HD



A0001-BLK4

A0001-BLK4
A0001-CHAR4
A0001-DKBLUE4
A0001-LTBLUE4
A0001-NAT4
A0001-RED4
A0001-YEL4



Dust Pickup System
 HP0031-DC17BRUTEKIT
 HP0031-DC20-BRUTEKIT

3" DIAMONDS	30	50	100	120	200	220	400	800	1500	1800	3000	3500	8500
Rosox Resin	X	X					X	X		X		X	X
Turbo Cat	X	X	X		X								
Typhoon	X	X		X		X	X	X				X	X
Concrete Flex	X	X	X		X		X	X	X		X		
Granite Polish	X	X	X		X		X	X	X		X		
Marble Flex		X	X		X		X	X	X				

Hawk Enterprises, Inc.

52744 Park Six Court,
 Elkhart, IN 46514

Distributed By:

Toll Free Phone (888) 289-4295 Local Phone (574) 294-1910
 Toll Free Fax (866) 429-5329 Local Fax (574) 970-0289

The Merlin

Revolutionary Design that Utilizes . . .

- Floating head to ensure 100% pad contact at all times
- Transport cart
- Quick handle/carriage removal



Merlin takes advantage of innovative engineering and modern design to set new records in production and user safety. Our unique handle carriage provides 100% contact with the floor and incorporates forward movement over the traditional side to side of standard floor machine design. Scrubbing, stripping, surface preparation, and stone polishing have never been easier. When hard jobs show up, Merlin works magic providing faster production, more consistent patterns, reduced fatigue, and the highest overall operator comfort. .

Features

- | | |
|--|---|
| <ul style="list-style-type: none"> • Quick handle-carriage removal for transport and storage • Low current draw • Thumb-operated safety switch • Negative pressure on/off switch • Dual steel operating triggers for left- or right-hand operation • One-piece, heavy duty, industrial, powder-coated, steel handle for optimum durability | <ul style="list-style-type: none"> • Welded frame for rugged, reliable performance • Non-marking, 2x8" ball bearing wheels • Variable position positive lock handle and vinyl grips for operator comfort and safety • 360-degree wraparound bumper -- no tools needed for replacement |
|--|---|



H

A

W

K



Hawk Scrapers (Surface Prep):

13"	HP0035
15"	N/A
17"	HP0033
20"	HP0034



Orbitec Diamond Driver:

13"	HP0018
15"	N/A
17"	HP0017
20"	HP0020



Weighted Diamond Pad Driver:

13"	A0017WTDPD (25#)
15"	N/A
17"	A0010WTDPD (46#)
20"	A0011WTDPD (64#)



Diamond Pad Driver

13"	A0017DPD
17"	A0010DPD
20"	A0011DPD



Pad Driver:

13"	A0017
15"	A0034
17"	A0010
20"	A0011



Grit Brush:

13"	A0018
15"	A0038
17"	A0008
20"	A0009



Sand Paper Driver:

13"	N/A
15"	N/A
17"	A0014-HD
20"	A00014-1HD



HP0070



Dust Pickup System
HP0031-DC17BRUTEKIT
HP0031-DC20-BRUTEKIT

3" DIAMONDS	30	50	100	120	200	220	400	800	1500	1800	3000	3500	8500
Rosox Resin	X	X					X	X		X		X	X
Turbo Cat	X	X	X		X								
Typhoon	X	X		X		X	X	X				X	X
Concrete Flex	X	X	X		X		X	X	X		X		
Granite Polish	X	X	X		X		X	X	X		X		
Marble Flex		X	X		X		X	X	X				

Technical Specifications

Model #	HP1517-180TEXHD MERLIN	HP1517-180TEXHD MERLIN
Part #	F0040-17-1.5TE	F0040-20-1.5TE
Pad Size	17 inch	20 inch
Power Source	115V 60Hz	115V 60Hz
Motor/HP	180 Frame, 1-1/2 HP TEFC AC Dual Capacitor Motor	180 Frame, 1-1/2 HP TEFC AC Dual Ca- pacitor Motor
Amp Draw (Low /High)***	7.9	8.5
Gear Box	3-Idler 11:1	3-Idler 11:1
Brush Rpm (Low / High)	165	165
Cord*/**	2-piece 50' 12-3 SJTOW	2-piece 50' 12-3 SJTOW

dB Rating: 66 Meets GS42 Requirements

Specifications subject to change without notice.

***230V Available ** 75' Cord Available (12-3) ***100' Cord Available (14-3)**

****** Amp Draw with Appropriate Pad Driver**

Model #	HP1517-2S MERLIN	HP1520-2S MERLIN
Part #	F0040-17-1.5-2S	F0040-20-1.5-2S
Pad Size	17 inch	20 inch
Power Source	115V	115V
Motor/HP	66 Frame, 1-1/2 HP DC Rectified	66 Frame, 1-1/2 HP DC Rectified
Amp Draw (Low /High)***	8.5 / 9.1	9.2 / 9.6
Gear Box	3-Idler 11:1	3-Idler 11:1
Brush Rpm (Low / High)	165 / 300	165 / 300
Cord*/**	2-piece 50' 12-3 SJTOW	2-piece 50' 12-3 SJTOW

dB Rating: Low Speed -62 High Speed - 69 Meets GS42 Requirements

Specifications subject to change without notice.

Hawk Enterprises, Inc.

52744 Park Six Court,
Elkhart, IN 46514

Distributed By:

Toll Free Phone (888) 289-4295 Local Phone (574) 294-1910
Toll Free Fax (866) 429-5329 Local Fax (574) 970-0289



H

A

W

K



The G2 Raptor Series



Using a “green” process, the G2 Raptor has the ability to remove large areas of floor finish without water or chemicals. If the operator chooses to use a more conventional approach, the amount of water and chemicals used can be reduced. This makes the process inherently safer for the operator and all personnel. This unit is also excellent for sanding, scrubbing, and light polishing. Furthermore, learning to operate the Raptor can be done in a matter of minutes.

Features

- | | |
|--|---|
| <ul style="list-style-type: none"> • 1.5 Hp TEFC motor 180-frame 1740 rpm • Non-marking 2x8” ball bearing wheels • Thumb-operated safety switch • Negative pressure on/off switch • Dual steel operating triggers for left- or right-hand operation | <ul style="list-style-type: none"> • Welded frame for rugged, reliable performance • Variable position positive lock handle and vinyl grips for operator comfort and safety • One-piece chrome, heavy duty steel handle for optimum durability |
|--|---|

Technical Specifications

Model #	Raptor 2014-G2
Part #	F-RAP2014-G2
Pad Size	20" X 14"
Pad Driver Type	Combination Pad Holder/ Diamond Pad Driver
Power Source *	115V 60Hz
Motor/HP	1.5 HP TEFC 1740 Rpm, 180 Frame
Amp Draw	9.00
Vibration Compensator	2.00 Inches
Cord	2-piece 50' 12-3 SJTOW (100' 12-3 Optional)
Pad Pressure (lbs/in ²)***	0.657
Pad Pressure (lbs/ft ²)***	94.63
Total Weight **	194 lbs
Shipping Weight	217 lbs

***Unit also available in 230V, and 50 Hz**

****Weight is calculated without the power cord**

*****Pad pressure does not include the weight of the power cord.**

Specifications subject to change without notice.

Included Weights



Heavy duty
transportation lock

Miscellaneous Pads

White	A0065-2014-CS
Red	A0066-2014-CS
Blue	A0067-2014-CS
Green	A0068-2014-CS
Black	A0069-2014-CS
Light Hoghair	A0070-2014-CS
Safire	A0071-2014-CS
Green Astro	A0072-2014-CS
Red Heat Screen - 80 Grit	A0074-2014-80
Red Heat Screen - 120 Grit	A0074-2014-120
Red Heat Screen - 180 grit	A0074-2014-180

Hawk Enterprises, Inc.

52744 Park Six Court
Elkhart, IN 46514

Distributed By:

Toll Free Phone (888) 289-4295 Local Phone (574) 294-1910
Toll Free Fax (866) 429-5329 Local Fax (574) 970-0289



TigerHawk 1410



ELKHART, IN

Revolutionary Design that Utilizes . . .

- Primary vibration isolators
- Secondary vibration isolators
- Floating head to ensure 100% pad contact at all times



(Shown with dust skirt installed)

The TigerHawk 1410's revolutionary rectangular, floating head design allows the operator to easily maneuver the unit with less fatigue than the normal oscillating units available in today's market. It also enables access to corners while standing, unlike conventional floor machines.

Using a "green" process, the TigerHawk 1410 has the ability to remove floor finish without water or chemicals. If the operator chooses to use a more conventional approach, the amount of water and chemicals used can be reduced. This makes the process inherently safer for the operator and all personnel. This unit is also excellent for sanding, scrubbing, and light polishing. Furthermore, learning to operate the TigerHawk 1410 can be done in a matter of minutes.



H

A

W

K

Features

- Start/Run capacitor 1/2 HP TEFC (totally enclosed fan cooled) motor keeps out dirt and dust for longer motor life.
- Extra heavy duty spring steel cord strain relief with a 50' 14-3 power cord
- Low current draw
- Thumb-operated safety switch
- Negative pressure on/off switch
- Dual steel operating triggers for left- or right-hand operation
- One-piece industrial powder coated heavy duty steel handle for optimum durability
- Welded frame for rugged, reliable performance
- Non-marking, 5" ball bearing wheels
- Multiple position handle adjustment for operator comfort and safety
- Comfort style vinyl handle grips for ease of use
- Full wraparound dust skirt

Model #	TH-1410
Part #	F-TIGER1410
Pad Size	14" X 10"
Pad Driver Type	Combination Pad Holder/Diamond Pad Driver
Power Source *	115V 50/60Hz
Motor/HP	.5 HP TEFC 1725 Rpm
Amp Draw	8.3
Vibration Isolators	Primary and Secondary
Cord	50' 14-3 STJOW
Pad Pressure (lbs/in ²)***	.57
Pad Pressure (lbs/ft ²)***	81.26
Total Weight **	107
Shipping Weight	119
*Unit also available in 230V, and 50 Hz **Weight is calculated without the power cord ***Pad pressure does not include the weight of the power cord. <i>Specifications subject to change without notice.</i>	

Miscellaneous Pads

White	A0065-1410-CS
Red	A0066-1410-CS
Blue	A0067-1410-CS
Green	A0068-1410-CS
Black	A0069-1410-CS
Light Hoghair	A0070-1410-CS
Safire	A0071-1410-CS
Green Astro	A0072-1410-CS
Red Heat Screen - 80 Grit	A0074-1410-80
Red Heat Screen - 120 Grit	A0074-1410-120
Red Heat Screen - 180 Grit	A0074-1410-180

***All units to be
operated with red
backer pad.***

Hawk Enterprises, Inc.

52744 Park Six Court,
Elkhart, IN 46514

Distributed By:

Toll Free Phone (888) 289-4295 Local Phone (574) 294-1910
Toll Free Fax (866) 429-5329 Local Fax (574) 970-0289



TigerHawk 2014 / 2814

Revolutionary Design that Utilizes . . .

- Primary vibration isolators
- Secondary vibration isolators
- Floating head to ensure 100% pad contact at all times
- Low profile
- Quick handle/carriage removal



TigerHawk 2014

TigerHawk 2814

The TigerHawk 2014 and TigerHawk 2814's revolutionary rectangular, floating head design allows the operator to easily maneuver the unit with less fatigue than the normal oscillating units available on today's market. It also enables access to corners while standing, unlike conventional floor machines. By utilization of the optional spray system or active vacuum system, the TigerHawk achieves functionality beyond the existing comparable units in the industry.

Using a "green" process, the TigerHawk 2014 and the TigerHawk 2814 have the ability to remove large areas of floor finish without water or chemicals. If the operator chooses to use a more conventional approach, the amount of water and chemicals used can be reduced. This makes the process inherently safer for the operator and all personnel. This unit is also excellent for sanding, scrubbing, and light polishing. Furthermore, learning to operate either TigerHawk can be done in a matter of minutes.



H

A

W

K

Features

- Twin (dual) capacitor 180-frame TEFC (totally enclosed fan cooled) motor keeps out dirt and dust for longer motor life.
- Extra heavy duty spring steel cord strain relief with a 2-piece, 12-3 power cord
- Low current draw
- Thumb-operated safety switch
- Negative pressure on/off switch
- Dual steel operating triggers for left- or right-hand operation
- One-piece industrial powder coated heavy duty steel handle for optimum durability
- Welded frame for rugged, reliable performance
- Non-marking, 2x8" ball bearing wheels
- Multiple position handle adjustment for operator comfort and safety
- Comfortable vinyl handle grips for ease of use
- Full wraparound dust skirt



Optional integrated vacuum system



Transport cart that comes with each unit



Optional spray system



Option gravity water feed system



Optional EZ Stop HP0028

Miscellaneous Pads

White	A0065-2014-CS	A0065-2814-CS
Red	A0066-2014-CS	A0066-2814-CS
Blue	A0067-2014-CS	A0067-2814-CS
Green	A0068-2014-CS	A0068-2814-CS
Black	A0069-2014-CS	A0069-2814-CS
Light Hoghair	A0070-2014-CS	A0070-2814-CS
Safire	A0071-2014-CS	A0071-2814-CS
Green Astro	A0072-2014-CS	A0072-2814-CS
Red Heat Screen - 80 Grit	A0074-2014-80-	A0074-2814-80
Red Heat Screen - 120 Grit	A0074-2014-120	A0074-2814-120
Red Heat Screen - 180 grit	A0074-2014-180	A0074-2814-180



Technical Specifications

35

Model #	TH-2014	TH-2014-GF	TH-2014-SP	TH-2014-V
Part #	F-TIGER2014	F-TIGER2014-GF	F-TIGER2014-SP	F-TIGER2014-V
Pad Size	20" X 14"	20" X 14"	20" X 14"	20" X 14"
Pad Driver Type	Combination Pad Holder/Diamond Pad Driver	Combination Pad Holder/Diamond Pad Driver	Combination Pad Holder/Diamond Pad Driver	Combination Pad Holder/Diamond Pad Driver
Power Source *	115V 60Hz	115V 60Hz	115V 60Hz	115V 60Hz
Motor/HP	1.5 HP TEFC 1740 Rpm, 180 Frame	1.5 HP TEFC 1740 Rpm, 180 Frame	1.5 HP TEFC 1740 Rpm, 180 Frame	1.5 HP TEFC 1740 Rpm, 180 Frame
Spray System	N/A	N/A	Yes	N/A
Active Vacuum	N/A	N/A	N/A	Yes
Amp Draw	7.8	7.8	7.8	7.8
Vibration Compensator	1.25 Inches	1.25 Inches	1.25 Inches	1.25 Inches
Cord	2-piece 50' 12-3 SJTOW	2-piece 50' 12-3 SJTOW	2-piece 50' 12-3 SJTOW	2-piece 50' 12-3 SJTOW
Pad Pressure (lbs/in ²)***	.71	.71	.72	.71
Total Weight **	250	259	259	269
Shipping Weight	283	292	292	302

Model #	TH-2814	TH-2814-GF	TH-2814-SP	TH-2814-V
Part #	F-TIGER2814	F-TIGER2814-GF	F-TIGER2814-SP	F-TIGER2814-V
Pad Size	28" X 14"	28" X 14"	28" X 14"	28" X 14"
Pad Driver Type	Combination Pad Holder/Diamond Pad Driver	Combination Pad Holder/Diamond Pad Driver	Combination Pad Holder/Diamond Pad Driver	Combination Pad Holder/Diamond Pad Driver
Power Source *	115V 60Hz	115V 60Hz	115V 60Hz	115V 60Hz
Motor/HP	1.5 HP TEFC 1740 Rpm, 180 Frame	1.5 HP TEFC 1740 Rpm, 180 Frame	1.5 HP TEFC 1740 Rpm, 180 Frame	1.5 HP TEFC 1740 Rpm, 180 Frame
Amp Draw	7.8	7.8	7.8	7.8
Vibration \ Compensator	1.25 Inches	1.25 Inches	1.25 Inches	1.25 Inches
Cord	2-piece 50' 12-3 SJTOW	2-piece 50' 12-3 SJTOW	2-piece 50' 12-3 SJTOW	2-piece 50' 12-3 SJTOW
Pad Pressure (lbs/in ²)***	.65	.66	.66	.65
Total Weight **	305	314	314	324
Shipping Weight	341	350	350	360

***Unit also available in 230V, and 50 Hz**

****Weight is calculated without the power cord**

*****Pad pressure does not include the weight of the power cord.**

Specifications subject to change without notice.

Hawk Enterprises, Inc.
Elkhart, IN 46514

Distributed By:

Toll Free Phone (888) 289-4295 Local Phone (574) 294-1910
Toll Free Fax (866) 429-5329 Local Fax (574) 970-0289



CE TigerHawk 2014 / 2814

Revolutionary Design that Utilizes . . .

- Primary vibration isolators
- Secondary vibration isolators
- Floating head to ensure 100% pad contact at all times
- Low Profile
- Quick handle/carriage removal



ELKHART, IN



TigerHawk 2014 CE

The TigerHawk 2014CE and TigerHawk 2814CE's revolutionary rectangular, floating head design allows the operator to easily maneuver the unit with less fatigue than the normal oscillating units available on today's market. It also enables access to corners while standing, unlike conventional floor machines. By utilization of the optional spray system or active vacuum system, the TigerHawk's achieve functionality beyond the existing comparable units in the industry.

Using a "green" process, the TigerHawk 2014CE and the TigerHawk 2814CE have the ability to remove large areas of floor finish without water or chemicals. If the operator chooses to use a more conventional approach, the amount of water and chemicals used can be reduced. This makes the process inherently safer for the operator and all personnel. This unit is also excellent for sanding, scrubbing, and light polishing. Furthermore, learning to operate this TigerHawk can be done in a matter of minutes.

H

A

W

K



H

A

W

K

Features

- Twin (dual) capacitor 56 frame TEFC (totally enclosed fan cooled) motor keeps out dirt and dust for longer motor life
- Extra heavy duty spring steel cord strain relief with a 14-3 power cord
- Low current draw
- EZ Stop On/Off
- One-piece industrial powder coated heavy duty steel handle for optimum durability
- Welded frame for rugged, reliable performance
- Non-marking, 2x8" ball bearing wheels
- Multiple position handle adjustment for operator comfort and safety
- Comfortable vinyl handle grips for ease of use
- Full wraparound dust skirt

Technical Specifications

Model #	TH-2014CE	TH-2814CE
Part #	F-TIGER2014CE	F-TIGER2814CE
Pad Size	20" X 14"	28" X 14"
Pad Driver Type	Combination Pad Holder/Diamond Pad Driver	Combination Pad Holder/Diamond Pad Driver
Power Source *	230V 50/60Hz	230V 50/60Hz
Motor/HP	1.5 HP TEFC 1740 Rpm, 56 Frame	1.5 HP TEFC 1740 Rpm, 56 Frame
Amp Draw	3.4	3.6
Vibration Compensator	1.25 Inches	1.25 Inches
Cord	14-3 SJTOW	14-3 SJTOW
Pad Pressure (lbs/in ²)***	.78	.70
Total Weight **	242	296
Shipping Weight	273	331

**** Weight is calculated without the power cord**

*****Pad pressure does not include the weight of the power cord.**

Specifications subject to change without notice.

Additional Options

Vacuum System

Spray System

All units come with a dust skirt and a transport cart.

Miscellaneous Pads

White	A0065-2014-CS	A0065-2814-CS
Red	A0066-2014-CS	A0066-2814-CS
Blue	A0067-2014-CS	A0067-2814-CS
Green	A0068-2014-CS	A0068-2814-CS
Black	A0069-2014-CS	A0069-2814-CS
Light Hoghair	A0070-2014-CS	A0070-2814-CS
Safire	A0071-2014-CS	A0071-2814-CS
Green Astro	A0072-2014-CS	A0072-2814-CS
Red Heat Screen - 80 Grit	A0074-2014-80-	A0074-2814-80
Red Heat Screen - 120 Grit	A0074-2014-120	A0074-2814-120
Red Heat Screen - 180 grit	A0074-2014-180	A0074-2814-180

Hawk Enterprises, Inc.

52744 Park Six Court
Elkhart, IN 46514

Distributed By:

Toll Free Phone (888) 289-4295 Local Phone (574) 294-1910
Toll Free Fax (866) 429-5329 Local Fax (574) 970-0289



Hawk High-Speed Burnishers



These 13", 15", 17", or 20", super-quiet, high-speed burnishers are available with or without dust control in 1000, 1500, 1800, or 2000 Rpm speeds, and units. Remarkably easy to handle, they are the perfect choice for all areas.

Features

- Flexible pad holder
- Non-marking, 5" ball bearing wheels
- Pad centering clamp
- UL/CUL approved (1500 rpm only)
- Thumb-operated safety switch
- Negative pressure on/off switch
- Dual steel operating triggers for left- or right-hand operation
- One-piece chrome, heavy duty steel handle for optimum durability
- Welded frame for rugged, reliable performance
- Variable position positive lock handle and vinyl grips for operator comfort and safety
- 360-degree wraparound bumper -- no tools needed for replacement



UL/CUL Approved
Machine



H

A

W

K

Technical Specifications

Model #	HP1513-HSB	HP1515-HSB	HP1517-HSB	HP1517-HSBDC	HP1520-HSB	HP1520-HS-BDC
Part #	F1500-13	F1500-15	F1500-17	F1500-17DC	F1500-20	F1500-20DC
Pad Size	13 inch	15 inch	17inch	16 inch	20 inch	19 inch
Power Source*	115V 50/60Hz	115V 50/60Hz	115V 50/60Hz	115V 50/60Hz	115V 50/60Hz	115V 50/60Hz
Motor/HP	66 Frame, 1-1/2 HP DC Rectified	66 Frame, 1-1/2 HP DC Rectified	66 Frame, 1-1/2 HP DC Rectified	66 Frame, 1-1/2 HP DC Rectified	66 Frame, 1-1/2 HP DC Rectified	66 Frame, 1-1/2 HP DC Rectified
Amp Draw	9.1	9.6	13.0	12.2	13.8	13.1
Belt Drive	Multi-V Belt Drive	Multi-V Belt Drive	Multi-V Belt Drive	Multi-V Belt Drive	Multi-V Belt Drive	Multi-V Belt Drive
Pad Rpm	1500	1500	1500	1500	1500	1500
Cord**/**	50' 14-3 STO	50' 14-3 STO	50' 14-3 STO	50' 14-3 STO	50' 14-3 STO	50' 14-3 STO
Weight	84 lbs	86 lbs	88 lbs	90 lbs	90 lbs	92 lbs
Shipping Weight	97 lbs	99 lbs	101 lbs	104 lbs	103 lbs	106lbs
Dust Control	No	No	No	Yes	No	Yes

*230V Available

** 75' Cord Available (12-3)

***100' Cord Available (12-3)

Model #	HP1513-1800	HP1515-1800	HP1517-1800	HP1517-1800DC	HP1520-1800	HP1520-1800DC
Part #	F1800-13	F1800-15	F1800-17	F1800-17DC	F1800-20	F1800-20DC
Pad Size	13 inch	15 inch	17inch	16 inch	20 inch	19 inch
Power Source*	115V 50/60Hz	115V 50/60Hz	115V 50/60Hz	115V 50/60Hz	115V 50/60Hz	115V 50/60Hz
Motor/HP	66 Frame, 1-1/2 HP DC Rectified	66 Frame, 1-1/2 HP DC Rectified	66 Frame, 1-1/2 HP DC Rectified	66 Frame, 1-1/2 HP DC Rectified	66 Frame, 1-1/2 HP DC Rectified	66 Frame, 1-1/2 HP DC Rectified
Amp Draw	9.5	9.9	13.9	13.2	14.6	13.6
Belt Drive	Multi-V Belt Drive	Multi-V Belt Drive	Multi-V Belt Drive	Multi-V Belt Drive	Multi-V Belt Drive	Multi-V Belt Drive
Pad Rpm	1800	1800	1800	1800	1800	1800
Cord**/**	50' 14-3 STO	50' 14-3 STO	50' 14-3 STO	50' 14-3 STO	50' 14-3 STO	50' 14-3 STO
Weight	84 lbs	86 lbs	88 lbs	90 lbs	90 lbs	92 lbs
Shipping Weight	97 lbs	99 lbs	101 lbs	104 lbs	103 lbs	106lbs
Dust Control	No	No	No	Yes	No	Yes

Machine shown below with optional dust control system.



Dust filter (A0029-2) is easy to remove for cleaning or replacement.

Optional Dust Pick-Up System





Technical Specifications (continued)

Model #	HP1513-2M	HP1515-2M	HP1517-2M	HP1517-2MDC	HP1520-2M	HP1520-2MDC
Part #	F2000-13	F2000-15	F2000-17	F2000-17DC	F2000-20	F2000-20DC
Pad Size	13 inch	15 inch	17inch	16 inch	20 inch	19 inch
Power Source*	115V 50/60Hz	115V 50/60Hz	115V 50/60Hz	115V 50/60Hz	115V 50/60Hz	115V 50/60Hz
Motor/HP	66 Frame, 1-1/2 HP DC Rectified	66 Frame, 1-1/2 HP DC Rectified	66 Frame, 1-1/2 HP DC Rectified	66 Frame, 1-1/2 HP DC Rectified	66 Frame, 1-1/2 HP DC Rectified	66 Frame, 1-1/2 HP DC Rectified
Amp Draw	10	10.8	14.9	13.9	16.4	14.8
Belt Drive	Multi-V Belt Drive	Multi-V Belt Drive	Multi-V Belt Drive	Multi-V Belt Drive	Multi-V Belt Drive	Multi-V Belt Drive
Pad Rpm	2000	2000	2000	2000	2000	2000
Cord**/**	50' 14-3 STO	50' 14-3 STO	50' 14-3 STO	50' 14-3 STO	50' 14-3 STO	50' 14-3 STO
Weight	84 lbs	86 lbs	88 lbs	90 lbs	90 lbs	92 lbs
Shipping Weight	97 lbs	99 lbs	101 lbs	103 lbs	103 lbs	105lbs
Dust Control	No	No	No	Yes	No	Yes

*230V Available

** 75' Cord Available (12-3)

***100' Cord Available (12-3)

dB Rating: Standard Unit - 69 Dust Control Unit - 62

Meets GS42 Requirements

Specifications subject to change without notice.

Hawk Enterprises, Inc.

52744 Park Six Court,
Elkhart, IN 46514

Distributed By:

Toll Free Phone (888) 289-4295 Local Phone (574) 294-1910
Toll Free Fax (866) 429-5329 Local Fax (574) 970-0289



Hawk AC High-Speed Burnishers



ELKHART, IN



These 13", 15", 17", or 20", super-quiet, high-speed burnishers are available with or without dust control in 750, 1000, 1500 (not available in 20 inch) rpm speeds, and units. Remarkably easy to handle, they are the perfect choice for all areas.

Features

- | | |
|--|--|
| <ul style="list-style-type: none"> • 1.5 HP TEFC (totally enclosed fan cooled) motor • Flexible pad holder • Non-marking, 5" ball bearing wheels • Pad centering clamp • Thumb-operated safety switch • Negative pressure on/off switch • Dual steel operating triggers for left- or right-hand operation | <ul style="list-style-type: none"> • One-piece chrome, heavy duty steel handle for optimum durability • Welded frame for rugged, reliable performance • Variable position positive lock handle and vinyl grips for operator comfort and safety • 360-degree wraparound bumper -- no tools needed for replacement |
|--|--|

Technical Specifications

Model #	HP1513-750	HP1515-750	HP1517-750	HP1517-750DC	HP1520-750	HP1520-750DC
Part #	F0750-13TE	F0750-15TE	F0750-17TE	F0750-17TEDC	F0750-20TE	F0750-20TEDC
Pad Size	13 inch	15 inch	17inch	16 inch	20 inch	19 inch
Power Source*	115V 60Hz	115V 60Hz	115V 60Hz	115V 60Hz	115V 60Hz	115V 60Hz
Motor/HP	56 Frame, 1-1/2 HP AC TEFC, Dual Capacitor	56 Frame, 1-1/2 HP AC TEFC, Dual Capacitor	56 Frame, 1-1/2 HP AC TEFC, Dual Capacitor	56 Frame, 1-1/2 HP AC TEFC, Dual Capacitor	56 Frame, 1-1/2 HP AC TEFC, Dual Capacitor	56 Frame, 1-1/2 HP AC TEFC, Dual Capacitor
Amp Draw	9.7	10.7	11.8	10.9	12.6	11.7
Belt Drive	Multi-V Belt	Multi-V Belt	Multi-V Belt	Multi-V Belt	Multi-V Belt	Multi-V Belt
Pad Rpm	750	750	750	750	750	750
Cord**/**	50' 14-3 STO	50' 14-3 STO	50' 14-3 STO	50' 14-3 STO	50' 14-3 STO	50' 14-3 STO
Weight	84 lbs	86 lbs	88 lbs	88 lbs	90 lbs	90 lbs
Shipping Weight	97 lbs	99 lbs	101 lbs	104 lbs	103 lbs	106lbs
Dust Control	No	No	No	Yes	No	Yes

*230V Available

** 75' Cord Available (12-3)

***100' Cord Available (12-3)

Model #	HP1513-1000	HP1515-1000	HP1517-1000	HP1517-1000DC	HP1520-1000	HP1520-1000DC
Part #	F1000-13TE	F1000-15TE	F1000-17TE	F1000-17TEDC	F1000-20TE	F1000-20TEDC
Pad Size	13 inch	15 inch	17inch	16 inch	20 inch	19 inch
Power Source*	115V 60Hz	115V 60Hz	115V 60Hz	115V 60Hz	115V 60Hz	115V 60Hz
Motor/HP	56 Frame, 1-1/2 HP AC TEFC, Dual Capacitor	56 Frame, 1-1/2 HP AC TEFC, Dual Capacitor	56 Frame, 1-1/2 HP AC TEFC, Dual Capacitor	56 Frame, 1-1/2 HP AC TEFC, Dual Capacitor	56 Frame, 1-1/2 HP AC TEFC, Dual Capacitor	56 Frame, 1-1/2 HP AC TEFC, Dual Capacitor
Amp Draw	10	11.2	12.4	11.6	13.5	12.4
Belt Drive	Multi-V Belt	Multi-V Belt	Multi-V Belt	Multi-V Belt	Multi-V Belt	Multi-V Belt
Pad Rpm	1000	1000	1000	1000	1000	1000
Cord**/**	50' 14-3 STO	50' 14-3 STO	50' 14-3 STO	50' 14-3 STO	50' 14-3 STO	50' 14-3 STO
Weight	84 lbs	86 lbs	88 lbs	88 lbs	90 lbs	90 lbs
Shipping Weight	97 lbs	99 lbs	101 lbs	104 lbs	103 lbs	106lbs
Dust Control	No	No	No	Yes	No	Yes



Technical Specifications

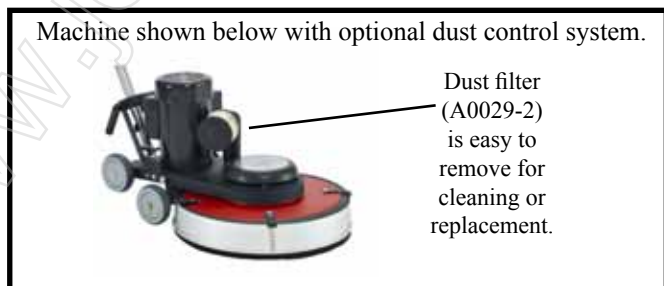
Model #	HP1513-1500	HP1515-1500	HP1517-1500	HP1517-1500DC
Part #	F1500-13TE	F1500-15TE	F1500-17TE	F1500-17TEDC
Pad Size	13 inch	15 inch	17inch	16 inch
Power Source*	115V 60Hz	115V 60Hz	115V 60Hz	115V 60Hz
Motor/HP	56 Frame, 1-1/2 HP AC TEFC, Dual Capacitor	56 Frame, 1-1/2 HP AC TEFC, Dual Capacitor	56 Frame, 1-1/2 HP AC TEFC, Dual Capacitor	56 Frame, 1-1/2 HP AC TEFC, Dual Capacitor
Amp Draw	10.3	11.7	13	12.3
Belt Drive	Multi-V Belt	Multi-V Belt	Multi-V Belt	Multi-V Belt
Pad Rpm	1500	1500	1500	1500
Cord**/**	50' 14-3 STO	50' 14-3 STO	50' 14-3 STO	50' 14-3 STO
Weight	84 lbs	86 lbs	88 lbs	88 lbs
Shipping Weight	97 lbs	99 lbs	101 lbs	104 lbs
Dust Control	No	No	No	Yes

*230V Available

** 75' Cord Available (12-3)

***100' Cord Available (12-3)

dB Rating: Standard Unit - 58 Dust Control Unit - 53
Meets GS42 Requirements
Specifications subject to change without notice.



Hawk Enterprises, Inc.

52744 Par Six Court,
Elkhart, IN 46514

Distributed By:

Toll Free Phone (888) 289-4295 Local Phone (574) 294-1910
Toll Free Fax (866) 429-5329 Local Fax (574) 970-0289

Hawk 2-Speed Burnishers



These 13", 15", 17", or 20", super-quiet, 2-speed burnishers are available with or without dust control in 500/1000, 750/1500, 900/1800, or 1000/2000 rpms. Remarkably easy to handle, they are the perfect choice for all areas.

Features

- | | |
|---|--|
| <ul style="list-style-type: none"> • DC rectified motor assures smooth running operation • Flexible pad holder • Non-marking, 5" ball bearing wheels • Pad centering clamp • Placement of the 2-speed control switch optimizes operating ease. • Thumb-operated safety switch • Negative pressure on/off switch • Dual steel operating triggers for left- or right-hand operation | <ul style="list-style-type: none"> • One-piece chrome, heavy duty steel handle for optimum durability • Welded frame for rugged, reliable performance • Variable position positive lock handle and vinyl grips for operator comfort and safety • 360-degree wraparound bumper -- no tools needed for replacement |
|---|--|



H

A

W

K

Model #	HP1513-0510	HP1515-0510	HP1517-0510	HP1517-0510DC	HP1520-0510	HP1520-0510DC
Part #	F0050-13	F0050-15	F0050-17	F0050-17DC	F0050-20	F0050-20DC
Pad Size	13 inch	15 inch	17inch	16 inch	20 inch	19 inch
Power Source	115V 50/60Hz	115V 50/60Hz	115V 50/60Hz	115V 50/60Hz	115V 50/60Hz	115V 50/60Hz
Motor/HP	66 Frame, 1-1/2 HP DC Rectified	66 Frame, 1-1/2 HP DC Rectified	66 Frame, 1-1/2 HP DC Rectified	66 Frame, 1-1/2 HP DC Rectified	66 Frame, 1-1/2 HP DC Rectified	66 Frame, 1-1/2 HP DC Rectified
Amp Draw (Low / High)	8.1 / 8.6	8.2 / 8.9	8.4 / 9.3	8.2 / 8.9	9.8 / 10.1	9.2 / 9.4
Belt Drive	Multi-V Belt	Multi-V Belt	Multi-V Belt	Multi-V Belt	Multi-V Belt	Multi-V Belt
Pad Rpm (Low / High)	500 / 1000	500 / 1000	500 / 1000	500 / 1000	500 / 1000	500 / 1000
Cord**/**	50' 14-3 STO	50' 14-3 STO	50' 14-3 STO	50' 14-3 STO	50' 14-3 STO	50' 14-3 STO
Weight	84 lbs	86 lbs	88 lbs	90 lbs	90 lbs	92 lbs
Shipping Weight	97 lbs	99 lbs	101 lbs	104 lbs	103 lbs	106lbs
Dust Control	No	No	No	Yes	No	Yes

***230V Available ** 75' Cord Available (12-3) ***100' Cord Available (12-3)**

Model #	HP1513-07515	HP1515-07515	HP1517-07515	HP1517-07515DC	HP1520-07515	HP1520-07515DC
Part #	F0075-13	F0075-15	F0075-17	F0075-17DC	F0075-20	F0075-20DC
Pad Size	13 inch	15 inch	17inch	16 inch	20 inch	19 inch
Power Source*	115V 50/60Hz	115V 50/60Hz	115V 50/60Hz	115V 50/60Hz	115V 50/60Hz	115V 50/60Hz
Motor/HP	66 Frame, 1-1/2 HP DC Rectified	66 Frame, 1-1/2 HP DC Rectified	66 Frame, 1-1/2 HP DC Rectified	66 Frame, 1-1/2 HP DC Rectified	66 Frame, 1-1/2 HP DC Rectified	66 Frame, 1-1/2 HP DC Rectified
Amp Draw (Low / High)	8.7 / 9.1	8.9 / 9.6	10.3 / 13.0	10.1 / 12.2	12.2 / 13.8	12 / 13.1
Belt Drive	Multi-V Belt	Multi-V Belt	Multi-V Belt	Multi-V Belt	Multi-V Belt	Multi-V Belt)
Pad Rpm (Low / High)	750 / 1500	750 / 1500	750 / 1500	750 / 1500	750 / 1500	750 / 1500
Cord**/**	50' 14-3 STO	50' 14-3 STO	50' 14-3 STO	50' 14-3 STO	50' 14-3 STO	50' 14-3 STO
Weight	84 lbs	86 lbs	88 lbs	90 lbs	90 lbs	92 lbs
Shipping Weight	97 lbs	99 lbs	101 lbs	104 lbs	103 lbs	106lbs
Dust Control	No	No	No	Yes	No	Yes

Machine shown below with optional dust control system.



Dust filter (A0029-2) is easy to remove for cleaning or replacement.

Optional Dust Pick-Up System



Technical Specifications (continued)

Model #	HP1513-0918	HP1515-0918	HP1517-0918	HP1517-0918DC	HP1520-0918	HP1520-0918DC
Part #	F0090-13	F0090-15	F0090-17	F0090-17DC	F0090-20	F0090-20DC
Pad Size	13 inch	15 inch	17inch	16 inch	20 inch	19 inch
Power Source	115V 50/60Hz	115V 50/60Hz	115V 50/60Hz	115V 50/60Hz	115V 50/60Hz	115V 50/60Hz
Motor/HP	66 Frame, 1-1/2 HP DC Rectified	66 Frame, 1-1/2 HP DC Rectified	66 Frame, 1-1/2 HP DC Rectified	66 Frame, 1-1/2 HP DC Rectified	66 Frame, 1-1/2 HP DC Rectified	66 Frame, 1-1/2 HP DC Rectified
Amp Draw (Low / High)	8.9 / 9.5	9.3 / 9.9	13.2 / 13.9	12.8 / 13.2	13.1 / 14.6	13 / 13.6
Belt Drive	Multi-V Belt	Multi-V Belt	Multi-V Belt	Multi-V Belt	Multi-V Belt	Multi-V Belt
Pad Rpm (Low / High)	900 / 1800	900 / 1800	900 / 1800	900 / 1800	900 / 1800	900 / 1800
Cord**	50' 14-3 STO	50' 14-3 STO	50' 14-3 STO	50' 14-3 STO	50' 14-3 STO	50' 14-3 STO
Weight	84 lbs	86 lbs	88 lbs	90 lbs	90 lbs	92 lbs
Shipping Weight	97 lbs	99 lbs	101 lbs	104 lbs	103 lbs	106lbs
Dust Control	No	No	No	Yes	No	Yes

*230V Available ** 75' Cord Available (12-3) ***100' Cord Available (12-3)

Model #	HP1513-1020	HP1515-1020	HP1517-1020	HP1517-1020DC	HP1520-1020	HP1520-1020 DC
Part #	F0100-13	F0100-15	F0100-17	F0100-17DC	F0100-20	F0100-20DC
Pad Size	13 inch	15 inch	17inch	16 inch	20 inch	19 inch
Power Source*	115V 50/60Hz	115V 50/60Hz	115V 50/60Hz	115V 50/60Hz	115V 50/60Hz	115V 50/60Hz
Motor/HP	66 Frame, 1-1/2 HP DC Rectified	66 Frame, 1-1/2 HP DC Rectified	66 Frame, 1-1/2 HP DC Rectified	66 Frame, 1-1/2 HP DC Rectified	66 Frame, 1-1/2 HP DC Rectified	66 Frame, 1-1/2 HP DC Rectified
Amp Draw (Low / High)	9.6 / 10	10.2 / 10.8	14.1 / 14.9	13.2 / 13.9	15.2 / 16.4	13.9 / 14.8
Belt Drive	Multi-V Belt	Multi-V Belt	Multi-V Belt	Multi-V Belt	Multi-V Belt	Multi-V Belt
Pad Rpm (Low / High)	1000 / 2000	1000 / 2000	1000 / 2000	1000 / 2000	1000 / 2000	1000 / 2000
Cord**/**	50' 14-3 STO	50' 14-3 STO	50' 14-3 STO	50' 14-3 STO	50' 14-3 STO	50' 14-3 STO
Weight	84 lbs	86 lbs	88 lbs	90 lbs	90 lbs	92 lbs
Shipping Weight	97 lbs	99 lbs	101 lbs	103 lbs	103 lbs	105lbs
Dust Control	No	No	No	Yes	No	Yes

dB Rating: Standard Unit High- 69 Dust Control Unit High - 62
 Standard Unit Low - 62 Dust Control Unit Low - 55
 Meets GS42 Requirements
 Specifications subject to change without notice.

Hawk Enterprises, Inc.

Distributed By:

52744 Park Six Court,
Elkhart, IN 46514

Toll Free Phone (888) 289-4295 Local Phone (574) 294-1910
 Toll Free Fax (866) 429-5329 Local Fax (574) 970-0289



H

A

W

K



Hawk Fold-Up High-Speed Burnishers



ELKHART, IN



These fold-up models are available in 1000, 1500, 1800, or 2000 rpm speeds to cover every need. Highly maneuverable burnishers are well suited when space is limited. The fold-up feature allows storage using minimal space and is available in 13", 15", 17", or 20" units.

Features

- | | |
|---|---|
| <ul style="list-style-type: none"> • DC rectified motor assures smooth running operation • Minimal storage space • Flexible pad holder • Non-marking, 5" ball bearing wheels • Pad centering clamp • Thumb-operated safety switch • Negative pressure on/off switch • Dual steel operating triggers for left- or right-hand operation | <ul style="list-style-type: none"> • Welded, heavy gauge, industrial powder coated, steel handle • Welded frame for rugged, reliable performance • Variable position positive lock handle and vinyl grips for operator comfort and safety • 360-degree wraparound bumper -- no tools needed for replacement |
|---|---|

Technical Specifications

Model #	HCF1513-1500	HCF1515-1500	HCF1517-1500	HCF1517-1500DC	HCF1520-1500	HCF1520-1500DC
Part #	F1500-13CF	F1500-15CF	F1500-17CF	F1500-17CFDC	F1500-20CF	F1500-20CFDC
Pad Size	13 inch	15 inch	17inch	16 inch	20 inch	19 inch
Power Source*	115V 50/60Hz	115V 50/60Hz	115V 50/60Hz	115V 50/60Hz	115V 50/60Hz	115V 50/60Hz
Motor/HP	66 Frame, 1-1/2 HP DC Rectified	66 Frame, 1-1/2 HP DC Rectified	66 Frame, 1-1/2 HP DC Rectified	66 Frame, 1-1/2 HP DC Rectified	66 Frame, 1-1/2 HP DC Rectified	66 Frame, 1-1/2 HP DC Rectified
Amp Draw	11.4	11.9	12.6	9.8	13.2	10.2
Belt Drive	Multi-V Belt Drive	Multi-V Belt Drive	Multi-V Belt Drive	Multi-V Belt Drive	Multi-V Belt Drive	Multi-V Belt Drive
Pad Rpm	1500	1500	1500	1500	1500	1500
Cord**/**	50' 14-3 SJT	50' 14-3 SJT	50' 14-3 SJT	50' 14-3 SJT	50' 14-3 SJT	50' 14-3 SJT
Weight	84 lbs	86 lbs	88 lbs	90 lbs	90 lbs	92 lbs
Shipping Weight	97 lbs	99 lbs	101 lbs	104 lbs	103 lbs	106lbs
Dust Control	No	No	No	Yes	No	Yes

*230V Available ** 75' Cord Available (12-3) ***100' Cord Available (12-3)

Model #	HCF1513-1800	HCF1515-1800	HCF1517-1800	HCF1517-1800DC	HCF1520-1800	HCF1520-1800DC
Part #	F1800-13CF	F1800-15CF	F1800-17CF	F1800-17CFDC	F1800-20CF	F1800-20CFDC
Pad Size	13 inch	15 inch	17inch	16 inch	20 inch	19 inch
Power Source*	115V 50/60Hz	115V 50/60Hz	115V 50/60Hz	115V 50/60Hz	115V 50/60Hz	115V 50/60Hz
Motor/HP	66 Frame, 1-1/2 HP DC Rectified	66 Frame, 1-1/2 HP DC Rectified	66 Frame, 1-1/2 HP DC Rectified	66 Frame, 1-1/2 HP DC Rectified	66 Frame, 1-1/2 HP DC Rectified	66 Frame, 1-1/2 HP DC Rectified
Amp Draw	11.7	12.3	13.2	10.1	13.9	10.7
Belt Drive	Multi-V Belt Drive	Multi-V Belt Drive	Multi-V Belt Drive	Multi-V Belt Drive	Multi-V Belt Drive	Multi-V Belt Drive
Pad Rpm	1800	1800	1800	1800	1800	1800
Cord**/**	50' 14-3 SJT	50' 14-3 SJT	50' 14-3 SJT	50' 14-3 SJT	50' 14-3 SJT	50' 14-3 SJT
Weight	84 lbs	86 lbs	88 lbs	90 lbs	90 lbs	92 lbs
Shipping Weight	97 lbs	99 lbs	101 lbs	104 lbs	103 lbs	106lbs
Dust Control	No	No	No	Yes	No	Yes

Machine shown below with optional dust control system.



Shown with optional splash guard





H

A

W

K

Technical Specifications (continued)

49

Model #	HCF1513-2000	HCF1515-2000	HCF1517-2000	HCF1517-2000DC	HCF1520-2000	HCF1520-2000DC
Part #	F2000-13CF	F2000-15CF	F2000-17CF	F2000-17CFDC	F2000-20CF	F2000-20CFDC
Pad Size	13 inch	15 inch	17inch	16 inch	20 inch	19 inch
Power Source*	115V 50/60Hz	115V 50/60Hz	115V 50/60Hz	115V 50/60Hz	115V 50/60Hz	115V 50/60Hz
Motor/HP	66 Frame, 1-1/2 HP DC Rectified	66 Frame, 1-1/2 HP DC Rectified	66 Frame, 1-1/2 HP DC Rectified	66 Frame, 1-1/2 HP DC Recti- fied	66 Frame, 1-1/2 HP DC Rectified	66 Frame, 1-1/2 HP DC Rectified
Amp Draw	11.8	12.4	13.8	11.1	14.8	11.8
Belt Drive	Multi-V Belt Drive	Multi-V Belt Drive	Multi-V Belt Drive	Multi-V Belt Drive	Multi-V Belt Drive	Multi-V Belt Drive
Pad Rpm	2000	2000	2000	2000	2000	2000
Cord**/**	50' 14-3 SJT	50' 14-3 SJT	50' 14-3 SJT	50' 14-3 SJT	50' 14-3 SJT	50' 14-3 SJT
Weight	84 lbs	86 lbs	88 lbs	90 lbs	90 lbs	92 lbs
Shipping Weight	97 lbs	99 lbs	101 lbs	103 lbs	103 lbs	105lbs
Dust Control	No	No	No	Yes	No	Yes

*230V Available ** 75' Cord Available (12-3) ***100' Cord Available (12-3)

dB Rating: Standard Unit - 69 Dust Control Unit - 62
Meets GS42 Requirements
Specifications subject to change without notice.

Hawk Enterprises, Inc.

52744 Park Six Court
Elkhart, IN 46514

Distributed By:

Toll Free Phone (888) 289-4295 Local Phone (574) 294-1910
Toll Free Fax (866) 429-5329 Local Fax (574) 970-0289

Hawk 2-Speed Fold-Up High-Speed Burnishers



ELKHART, IN



These 2-speed, fold-up models are available in 500/1000, 750/1500, 900/ 1800, or 1000/2000 rpms to cover every need. Highly maneuverable burnishers are well suited when space is limited. The fold-up feature allows storage using minimal space and is available in 13", 15", 17", or 20" units.

Features

- | | |
|--|---|
| <ul style="list-style-type: none"> • Minimal storage space • DC rectified motor assures smooth running operation • Flexible pad holder • Non-marking, 5" ball bearing wheels • Pad centering clamp • Placement of the 2-speed control switch optimizes operating ease. • Thumb-operated safety switch • Negative pressure on/off switch • Dual steel operating triggers for left- or right-hand operation | <ul style="list-style-type: none"> • Welded, heavy gauge, industrial powder coated, steel handle • Welded frame for rugged, reliable performance • Variable position positive lock handle and vinyl grips for operator comfort and safety • 360-degree wraparound bumper -- no tools needed for replacement |
|--|---|



H

A

W

K

Technical Specifications

Model #	HCF1513-0510	HCF1515-0510	HCF1517-0510	HCF1517-0510DC	HCF1520-0510	HCF1520-0510DC
Part #	F0050-13CF	F0050-15CF	F0050-17CF	F0050-17CFDC	F0050-20CF	F0050-20CFDC
Pad Size	13 inch	15 inch	17inch	16 inch	20 inch	19 inch
Power Source*	115V 50/60Hz	115V 50/60Hz	115V 50/60Hz	115V 50/60Hz	115V 50/60Hz	115V 50/60Hz
Motor/HP	66 Frame, 1-1/2 HP DC Rectified	66 Frame, 1-1/2 HP DC Rectified	66 Frame, 1-1/2 HP DC Rectified	66 Frame, 1-1/2 HP DC Rectified	66 Frame, 1-1/2 HP DC Rectified	66 Frame, 1-1/2 HP DC Rectified
Amp Draw (Low/High)	10.1 / 10.6	10.4 / 10.9	11.5 / 11.9	9.2 / 9.4	11.9 / 12.5	9.4 / 9.6
Belt Drive	Multi-V Belt	Multi-V Belt	Multi-V Belt	Multi-V Belt	Multi-V Belt	Multi-V Belt
Pad Rpm (Low/High)	500 / 1000	500 / 1000	1500 / 1000	500 / 1000	500 / 1000	500 / 1000
Cord**/ ***	50' 14-3 SJT	50' 14-3 SJT	50' 14-3 SJT	50' 14-3 SJT	50' 14-3 SJT	50' 14-3 SJT
Weight	84 lbs	86 lbs	88 lbs	90 lbs	90 lbs	92 lbs
Shipping Weight	97 lbs	99 lbs	101 lbs	104 lbs	103 lbs	106 lbs
Dust Control	No	No	No	Yes	No	Yes

*230V Available

** 75' Cord Available (12-3)

***100' Cord Available (12-3)

Model #	HCF1513-07515	HCF1515-07515	HCF1517-07515	HCF1517-07515DC	HCF1520-07515	HCF1520-07515DC
Part #	F0075-13CF	F0075-15CF	F0075-17CF	F0075-17CFDC	F0075-20CF	F0075-20CFDC
Pad Size	13 inch	15 inch	17inch	16 inch	20 inch	19 inch
Power Source*	115V 50/60Hz	115V 50/60Hz	115V 50/60Hz	115V 50/60Hz	115V 50/60Hz	115V 50/60Hz
Motor/HP	66 Frame, 1-1/2 HP DC Rectified	66 Frame, 1-1/2 HP DC Rectified	66 Frame, 1-1/2 HP DC Rectified	66 Frame, 1-1/2 HP DC Rectified	66 Frame, 1-1/2 HP DC Rectified	66 Frame, 1-1/2 HP DC Rectified
Amp Draw (Low/High)	11.1 / 11.4	11.7 / 11.9	12.1 / 12.6	9.6 / 9.8	12.8 / 13.2	10 / 10.2
Belt Drive	Multi-V Belt	Multi-V Belt	Multi-V Belt	Multi-V Belt	Multi-V Belt	Multi-V Belt
Pad Rpm (Low/High)	750 / 1500	750 / 1500	750 / 1500	750 / 1500	750 / 1500	750 / 1500
Cord**/**	50' 14-3 SJT	50' 14-3 SJT	50' 14-3 SJT	50' 14-3 SJT	50' 14-3 SJT	50' 14-3 SJT
Weight	84 lbs	86 lbs	88 lbs	90 lbs	90 lbs	92 lbs
Shipping Weight	97 lbs	99 lbs	101 lbs	104 lbs	103 lbs	106 lbs
Dust Control	No	No	No	Yes	No	Yes

Specifications subject to change without notice.

Machine shown below with optional dust control system.



dB Rating: Standard Unit High- 69
 Dust Control Unit High - 62
 Standard Unit Low - 62
 Dust Control Unit Low - 55

Meets GS42 Requirements

Specifications subject to change without notice.

Technical Specifications (continued)

52



H

A

W

K

Model #	HCF1513-0918	HCF1515-0918	HCF1517-0918	HCF1517-0918DC	HP1520-0918	HCF1520-0918DC
Part #	F0090-13CF	F0090-15CF	F0090-17CF	F0090-17CFDC	F0090-20CF	F0090-20CFDC
Pad Size	13 inch	15 inch	17inch	16 inch	20 inch	19 inch
Power Source*	115V 50/60Hz	115V 50/60Hz	115V 50/60Hz	115V 50/60Hz	115V 50/60Hz	115V 50/60Hz
Motor/HP	66 Frame, 1-1/2 HP DC Rectified	66 Frame, 1-1/2 HP DC Rectified	66 Frame, 1-1/2 HP DC Rectified	66 Frame, 1-1/2 HP DC Rectified	66 Frame, 1-1/2 HP DC Rectified	66 Frame, 1-1/2 HP DC Rectified
Amp Draw (Low/High)	11.6 / 11.7	12 / 12.3	12.9 / 13.2	9.8 / 10.1	13.2 / 13.9	10.4 / 10.7
Belt Drive	Multi-V Belt	Multi-V Belt	Multi-V Belt	Multi-V Belt	Multi-V Belt	Multi-V Belt
Pad Rpm (Low/High)	900 / 1800	900 / 1800	900 / 1800	900 / 1800	900 / 1800	900 / 1800
Cord**/**	50' 14-3 SJT	50' 14-3 SJT	50' 14-3 SJT	50' 14-3 SJT	50' 14-3 SJT	50' 14-3 SJT
Weight	84 lbs	86 lbs	88 lbs	90 lbs	90 lbs	92 lbs
Shipping Weight	97 lbs	99 lbs	101 lbs	104 lbs	103 lbs	106 lbs
Dust Control	No	No	No	Yes	No	Yes

*230V Available

** 75' Cord Available (12-3)

***100' Cord Available (12-3)

Model #	HCF1513-1020	HCF1515-1020	HCF1517-1020	HCF1517-1020DC	HCF1520-1020	HCF1520-1020DC
Part #	F0100-13CF	F0100-15CF	F0100-17CF	F0100-17CFDC	F0100-20CF	F0100-20CFDC
Pad Size	13 inch	15 inch	17inch	16 inch	20 inch	19 inch
Power Source*	115V 50/60Hz	115V 50/60Hz	115V 50/60Hz	115V 50/60Hz	115V 50/60Hz	115V 50/60Hz
Motor/HP	66 Frame, 1-1/2 HP DC Rectified	66 Frame, 1-1/2 HP DC Rectified	66 Frame, 1-1/2 HP DC Rectified	66 Frame, 1-1/2 HP DC Rectified	66 Frame, 1-1/2 HP DC Rectified	66 Frame, 1-1/2 HP DC Rectified
Amp Draw (Low/High)	11.6 / 11.8	12.1 / 12.4	13.2 / 13.8	10.6 / 11.1	14.1 / 14.8	11.2 / 11.8
Belt Drive	Multi-V Belt	Multi-V Belt	Multi-V Belt	Multi-V Belt	Multi-V Belt	Multi-V Belt
Pad Rpm (Low/High)	1000 / 2000	1000 / 2000	1000 / 2000	1000 / 2000	1000 / 2000	1000 / 2000
Cord**/**	50' 14-3 SJT	50' 14-3 SJT	50' 14-3 SJT	50' 14-3 SJT	50' 14-3 SJT	50' 14-3 SJT
Weight	84 lbs	86 lbs	88 lbs	90 lbs	90 lbs	92 lbs
Shipping Weight	97 lbs	99 lbs	101 lbs	103 lbs	103 lbs	105 lbs
Dust Control	No	No	No	Yes	No	Yes

Hawk Enterprises, Inc.

52744 Park Six Court,
Elkhart, IN 46514

Distributed By:

Toll Free Phone (888) 289-4295 Local Phone (574) 294-1910
Toll Free Fax (866) 429-5329 Local Fax (574) 970-0289



H

A

W

K

Hawk Fold-Up AC High-Speed Burnishers



ELKHART, IN



These 13", 15", 17", and 20" super-quiet, fold-up, high-speed burnishers are available with or without dust control in the 750, 1000 and 1500 rpms. Remarkably easy to handle, they are the perfect choice for all areas.

Features

- | | |
|--|---|
| <ul style="list-style-type: none"> • 1.5 HP TEFC (totally enclosed fan cooled) motor • Flexible pad holder • Non-marking, 5" ball bearing wheels • Pad centering clamp • Thumb-operated safety switch • Negative pressure on/off switch • Dual steel operating triggers for left- or right-hand operation | <ul style="list-style-type: none"> • Welded, heavy gauge, industrial powder coated, steel handle • Welded frame for rugged, reliable performance • Variable position positive lock handle and vinyl grips for operator comfort and safety • 360-degree wraparound bumper -- no tools needed for replacement |
|--|---|

Technical Specifications

Model #	HCF1513-750TE	HCF1515-750TE	HCF1517-750TE	HCF1517-750TEDC	HCF1520-750TE	HCF1520-750TEDC
Part #	F0750-13TECF	F0750-15TECF	F0750-17TECF	F0750-17TECFDC	F0750-TECF	F0750-20TECFDC
Pad Size	13 inch	15 inch	17inch	16 inch	20 inch	19 inch
Power Source*	115V 60Hz	115V 60Hz	115V 60Hz	115V 60Hz	115V 60Hz	115V 60Hz
Motor/HP	56 Frame, 1-1/2 HP AC TEFC, Dual Capacitor	56 Frame, 1-1/2 HP AC TEFC, Dual Capacitor	56 Frame, 1-1/2 HP AC TEFC, Dual Capacitor	56 Frame, 1-1/2 HP AC TEFC, Dual Capacitor	56 Frame, 1-1/2 HP AC TEFC, Dual Capacitor	56 Frame, 1-1/2 HP AC TEFC, Dual Capacitor
Amp Draw	9.7	10.7	11.8	10.9	12.6	11.7
Belt Drive	Multi-V Belt	Multi-V Belt	Multi-V Belt	Multi-V Belt	Multi-V Belt	Multi-V Belt
Pad Rpm	750	750	750	750	750	750
Cord**/**	50' 14-3 SJT	50' 14-3 SJT	50' 14-3 SJT	50' 14-3 SJT	50' 14-3 SJT	50' 14-3 SJT
Weight	84 lbs	86 lbs	88 lbs	88 lbs	90 lbs	90 lbs
Shipping Weight	97 lbs	99 lbs	101 lbs	104 lbs	103 lbs	106 lbs
Dust Control	No	No	No	Yes	No	Yes

*230V Available

** 75' Cord Available (12-3)

***100' Cord Available (12-3)

Model #	HCF1513-1000TE	HCF1515-1000TE	HCF1517-1000TE	HCF1517-1000TEDC	HCF1520-1000TE	HCF1520-1000TEDC
Part #	F1000-13TECF	F1000-15CF	F1000-17CF	F1000-17CFDC	F1000-20CF	F1000-TECFDC
Pad Size	13 inch	15 inch	17inch	16 inch	20 inch	19 inch
Power Source*	115V 60Hz	115V 60Hz	115V 60Hz	115V 60Hz	115V 60Hz	115V 60Hz
Motor/HP	56 Frame, 1-1/2 HP AC TEFC, Dual Capacitor	56 Frame, 1-1/2 HP AC TEFC, Dual Capacitor	56 Frame, 1-1/2 HP AC TEFC, Dual Capacitor	56 Frame, 1-1/2 HP AC TEFC, Dual Capacitor	56 Frame, 1-1/2 HP AC TEFC, Dual Capacitor	56 Frame, 1-1/2 HP AC TEFC, Dual Capacitor
Amp Draw	10	11.2	12.4	11.6	13.5	12.4
Belt Drive	Multi-V Belt	Multi-V Belt	Multi-V Belt	Multi-V Belt	Multi-V Belt	Multi-V Belt
Pad Rpm	1000	1000	1000	1000	1000	1000
Cord**/**	50' 14-3 SJT	50' 14-3 SJT	50' 14-3 SJT	50' 14-3 SJT	50' 14-3 SJT	50' 14-3 SJT
Weight	84 lbs	86 lbs	88 lbs	88 lbs	90 lbs	90 lbs
Shipping Weight	97 lbs	99 lbs	101 lbs	104 lbs	103 lbs	106 lbs
Dust Control	No	No	No	Yes	No	Yes



H

A

W

K



H

A

W

K

Technical Specifications (continued)

Model #	HCF1513-1500TE	HCF1515-1500TE	HCF1517-1500TE	HCF1517-1500TEDC
Part #	F1500-13TECF	F1500-15TECF	F1500-17TECF	F1500-17TECFDC
Pad Size	13 inch	15 inch	17inch	16 inch
Power Source*	115V 60Hz	115V 60Hz	115V 60Hz	115V 60Hz
Motor/HP	56 Frame, 1-1/2 HP AC TEFC, Dual Capacitor	56 Frame, 1-1/2 HP AC TEFC, Dual Capacitor	56 Frame, 1-1/2 HP AC TEFC, Dual Capacitor	56 Frame, 1-1/2 HP AC TEFC, Dual Capacitor
Amp Draw	10.3	11.7	13	12.3
Belt Drive	Multi-V Belt	Multi-V Belt	Multi-V Belt	Multi-V Belt
Pad Rpm	1500	1500	1500	1500
Cord**/**	50' 14-3 SJT	50' 14-3 SJT	50' 14-3 SJT	50' 14-3 SJT
Weight	84 lbs	86 lbs	88 lbs	90 lbs
Shipping Weight	97 lbs	99 lbs	101 lbs	104 lbs
Dust Control	No	No	No	Yes

*230V Available

** 75' Cord Available (12-3)

***100' Cord Available (12-3)

dB Rating: Standard Unit - 58 Dust Control Unit - 51
Meets GS42 Requirements
Specifications subject to change without notice.



Hawk Enterprises, Inc.

52744 Park Six Court,
Elkhart, IN 46514

Distributed By:

Toll Free Phone (888) 289-4295 Local Phone (574) 294-1910
Toll Free Fax (866) 429-5329 Local Fax (574) 970-0289



Standard Black Hawk Floor Machine



Machine operators will appreciate the solid performance of this economy floor machine that delivers on every job. The consistent performance of these floor machines makes them a good choice for floor cleaning industry.

Features

- | | |
|--|---|
| <ul style="list-style-type: none"> • Triple idler planetary steel helical-cut gear drives • All steel construction for superior strength and longevity • Thumb-operated safety switch • Negative pressure on/off switch • Dual steel operating triggers for left- or right-hand operation • One-piece chrome, heavy duty steel handle for optimum durability | <ul style="list-style-type: none"> • Welded frame for rugged, reliable performance • Non-marking, 5" ball bearing wheels • Variable position positive lock handle and vinyl grips for operator comfort and safety • 360-degree wraparound bumper -- no tools needed for replacement |
|--|---|



H

A

W

K

Model #	BLKHWK17	BLKHWK20
Part #	F0009-BH	F0012-BH
Power Source	115V 60Hz	115V 60Hz
Motor/HP	66 Frame 1.5 Hp Dual Capacitor Motor	66 Frame 1.5 Hp Dual Capacitor Motor
Amp Draw	5.9	6.5
Gear Box	3-Idler 10:1	3-Idler 10:1
Brush Rpm	175	175
Cord*	50' 14-3 SJT	50' 14-3 SJT
Weight	94 lbs	97 lbs
Shipping Weight	106 lbs	109 lbs

***230V Available**

****** Amp Draw with Appropriate Pad Driver**

dB Rating: 56 Meets GS42 Requirements

Specifications subject to change without notice.

Accessories for Every Application

Model #	BLKHWK17	BLKHWK20
Pad Driver	A0010ECC	A0011ECC
Pad Driver	A0010	A0011
Polish Brush	A0004	A0005
Poly Brush	A0002	A0003
Nylon Brush	A0006	A0007
Grit Brush	A0008	A0009
Polish (LT Hogs Hair) Pads (5 Per Case)	A0025-17P-CS	A0025-20P-CS
Scrub (Red)Pads (5 Per Case)	A0026-17R-CS	A0026-20R-CS
Strip (Black) Pads (5 Per Case)	A0027-17BK-CS	A0027-20BK-CS
Tank	A0001-NAT4	A0001-NAT4



Dust Pickup Systems
HP0031-DC17-STANDKIT
HP0031-DC20-STANDKIT



Splash Guards
SPLASH17
SPLASH20

Hawk Enterprises, Inc.

52744 Park Six Court,
Elkhart, IN 46514

Distributed By:

Toll Free Phone (888) 289-4295 Local Phone (574) 294-1910
Toll Free Fax (866) 429-5329 Local Fax (574) 970-0289



Black Hawk 1250 Burnisher



This 20", super-quiet, AC high-speed burnisher, is only available in 1250 rpms. Remarkably easy to handle, they are the perfect choice for all areas.

Features

- 1.5 HP TEFC (totally enclosed fan cooled) motor
- Flexible pad holder
- Non-marking, 5" ball bearing wheels
- Pad centering clamp
- Thumb-operated safety switch
- Negative pressure on/off switch
- Dual steel operating triggers for left- or right-hand operation
- One-piece chrome, heavy duty steel handle for optimum durability
- Welded frame for rugged, reliable performance
- Variable position positive lock handle and vinyl grips for operator comfort and safety
- High density molecular weight plastic brush cover



H

A

W

K

Technical Specifications

59

Model #	BLKHK1250
Part #	F1250-20TE-BH
Pad Size	20 inch
Power Source*	115V 60Hz
Motor/HP	56 Frame, 1-1/2 HP TEFC AC Motor
Amp Draw	11.2
Belt Drive	Multi-V Belt Drive
Pad Rpm	1250
Cord**	50' 14-3 SJT
Weight	90 lbs
Shipping Weight	103 lbs
Dust Control	No

***230V Available**

****** Amp Draw with Appropriate Pad Driver**

dB Rating: 58 Meets GS42 Requirements
Specifications subject to change without notice.



Hawk Enterprises, Inc.

52744 Park Six Court,
Elkhart, IN 46514

Distributed By:

Toll Free Phone (888) 289-4295 Local Phone (574) 294-1910
Toll Free Fax (866) 429-5329 Local Fax (574) 970-0289

Hawk Propane Burnishers



To produce a hard, durable floor finish with an amazing shine that stands up under heavy traffic, nothing beats Hawk's propane burnishers!

Features

- | | |
|---|---|
| <ul style="list-style-type: none"> • No batteries to recharge • Minimum maintenance and high productivity • Super easy service and maintenance. • Clutch drive available (optional) • Premium fuel regulating system • Electric or battery engine start available. • UL/CUL listed starter and ignition for safety assurance • Heavy duty steel 20-pound propane tank | <ul style="list-style-type: none"> • Heavy duty frame construction that's rugged and reliable • Oversize drive bearings • Handle ergonomically designed, adjusts easily for operator comfort • Low emissions system on Kawasaki engines • Balanced engine and precision drive assembly for vibration prevention • Belt drive transmission |
|---|---|



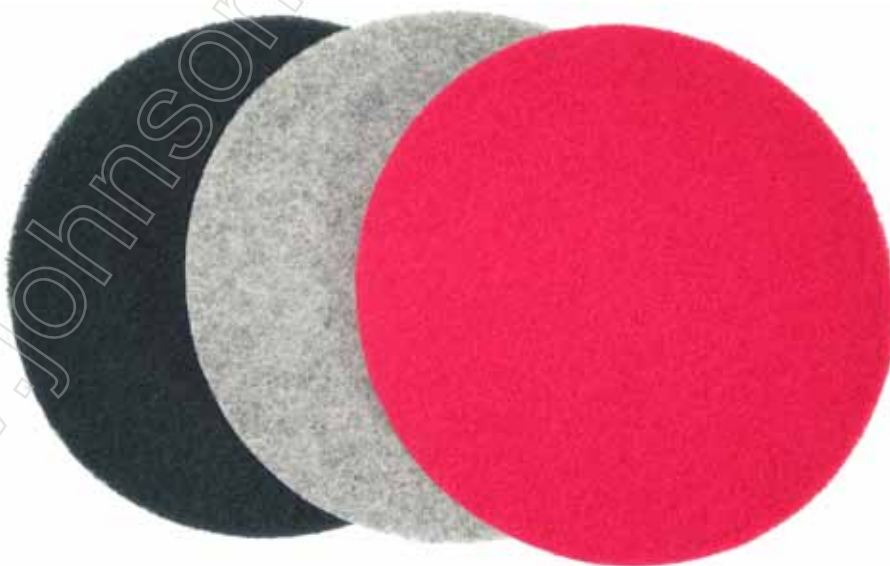
Technical Specifications

Model #	PP21	PP27
Part #	F0028	F0029
Production	25,000 sq. ft. per hr.	33,000 sq. ft. per hr.
Engine*	Kawasaki 18 HP (Electric Start)	Kawasaki 18 HP (Electric Start)
Engine Speed	3600 Rpm	3600 Rpm
Tank	20 Pound Steel Fill Tank	20 Pound Steel Fill Tank
Pad Size	21 Inch	28 Inch
Pad Rpm	1800	1800
Dimensions	22 3/4" x 51 1/2" x 40"	27 3/4" x 56 3/4" x 40"
Weight	220 lbs	245 lbs
Shipping Weight	251 lbs	295 lbs

Specifications subject to change without notice.

* Dust control option available upon request. *

Pads Available



Hawk Enterprises, Inc.

Elkhart, IN 46514

Distributed By:

www.hawkenterprises.com

E-Mail: customerservice@hawkenterprises.com

Toll Free Phone (888) 289-4295 Local Phone (574) 294-1910

Toll Free Fax (866) 429-5329 Local Fax (574) 970-0289



BH20DT Air Mover

Injection molded housing makes it light weight and durable



Auxiliary Outlet using a 12 AMP outlet

Cfm	800
Horsepower	1/5
Amps	1.5
Speeds	3
Housing	PP Injection Mold
Weight	10.2 lbs
Auxiliary Outlet	12 amp
Timer	3 Hour
Positions	0°/20°/45°/90°
Cord	10 Foot 14-3
Thermal Protected	Yes

(Specifications subject to change without notice)

Small but mighty describes the BH20DT Air Mover. This powerful 800 CFM multipurpose mini air mover is economical to purchase and efficient to operate. At just 10 lbs, it transports easily and fits into tight spots including crawl spaces, closets, small rooms, attics, shower rooms, dormitories, hallways, recreational vehicles, and more. The auxiliary 12 amp outlet is for connecting multiple units in a series, for efficient air movement across a wider area. Built-in timer and speed control allows precise, controlled operation.





H

A

W

K

Auxiliary Outlet



This blower is equipped with a 12 amp circuit breaker power outlet, allowing multiple air movers to be connected.

Compact, light weight,
and stackable.



0°



15°



45°



90°

The BH20DT can be positioned in 4 different angles to direct the air to the location of choice.

Hawk Enterprises, Inc.

52744 Park Six Court,
Elkhart, IN 46514

Distributed By:

Toll Free Phone (888) 289-4295 Local Phone (574) 294-1910
Toll Free Fax (866) 429-5329 Local Fax (574) 970-0289

BH33D Air Mover

Injection molded housing makes it light weight and durable

3-speed switch for variable air flow

Plastic rotary fan for durability and long life

12 amp GFCI Auxiliary Outlet



CMF	1600
Horsepower	1/3
Amps	3.0
Speeds	3
Housing	PP Injection Mold
Weight	18 lbs
Auxiliary Outlet	12 amp GCFI
Positions	0°/20°/45°/90°
Cord	20 Foot 14-3
Thermal Protected	Yes
Transport Cart	Optional

(Specifications subject to change without notice)

The rugged BH33D is a 1/3HP air mover designed for sanitation and water damage restoration. Made from a state-of-the-art, injection molded material, its reliability will give a long term performance. It is equipped with a GFCI outlet to aid with safety. These low amp draw air movers are equipped with a daisy chain to connect multiple units, using a single 12-amp GFCI outlet, thus making all jobs more efficient.



H

A

W

K





Compact, light weight,
and stackable.



Auxiliary
Outlet



This blower is
equipped with a 12
amp GFCI power
outlet, allowing
multiple air movers to
be connected.



0°



15°



45°



90°

The BH30D can be
positioned in 4
different angles to
direct the air to the
location of choice.



Optional telescopic transport
cart (BH-33/50HK)

Hawk Enterprises, Inc.

52744 Park Six Court,
Elkhart, IN 46514

Distributed By:

Toll Free Phone (888) 289-4295 Local Phone (574) 294-1910
Toll Free Fax (866) 429-5329 Local Fax (574) 970-0289

BH50 Air Mover

Injection molded housing makes it light weight and durable

3-speed switch for variable air flow

Plastic rotary fan for durability and long life



CMF	2800
Horsepower	1/2
Amps	5.0
Speeds	3
Housing	PP Injection Mold
Weight	19 lbs
Auxiliary Outlet	No
Positions	0°/20°/45°/90°
Cord	20 Foot 16-3
Thermal Protected	Yes
Transport Cart	Optional

(Specifications subject to change without notice)

The rugged BH50 is a 1/2 HP air mover designed for sanitation, construction, and restoration. Made from a state-of-the-art, injection molded material, its reliability will give a long term performance. These air movers are equipped with a three speed dial, up to 2800 CFM, and are ideal for professional carpet cleaners.



H

A

W

K





H

A

W

K

Compact, light weight,
and stackable.



0°



15°



45°



90°

Optional telescopic transport
cart (BH-33/50HK)



The BH50 can be
positioned in 4
different angles to
direct the air to the
location of choice.

Hawk Enterprises, Inc.

52744 Park Six Court,
Elkhart, IN 46514

Distributed By:

Toll Free Phone (888) 289-4295 Local Phone (574) 294-1910
Toll Free Fax (866) 429-5329 Local Fax (574) 970-0289



BH33ADT AIR Mover

Auxiliary
outlet

Variable speed switch
accommodates any
condition

3-hour timer

Injection molded
housing making it
light weight and
durable



CFM	3600
Horsepower	1/3
Amps	3.2
Speeds	Variable
Housing	ABS Injection
Weight	24.9 lbs
Auxiliary Outlet	12 amp Circuit breaker
Positions	360°
Cord	20 Foot 14-3
Thermal Protected	Yes

(Specifications subject to change without notice)

The BH33ADT is a exterior-rotor motor air mover. It is fully adjustable and comes with a 12 amp circuit breaker and a three-hour timer for unsurpassed functionality in all professional applications. Unlike other air movers, it is a variable speed controlled unit. The BH33ADT has specially designed blades for a better air focus and an extended air flow range. This allows the proper amount of air flow for any task at hand.





H

A

W

K



Compact, light weight,
and stackable.



Hawk Enterprises, Inc.

52744 Park Six Court,
Elkhart, IN 46514

Distributed By:

Toll Free Phone (888) 289-4295 Local Phone (574) 294-1910
Toll Free Fax (866) 429-5329 Local Fax (574) 970-0289

Hawk Industrial Air Mover



ELKHART, IN



Features:

- Continuous duty rugged ball bearing motor for long life and reliability
- Stackable for easy storage
- Only 31 lbs. – sturdy and easily portable
- Three Speed – 2950 CFM, 2500 CFM, 2000 CFM; 1085 Rpm, 965 Rpm, 820 Rpm
- Rubber feet for non-slip positioning
- UL/CUL approved



H

A

W

K



H

A

W

K



BH001-LT.BLUE



BH001-RED



BH001-DKBLUE



BH001-BLACK

* Other colors available upon request - Minimum order required

Model#	BH001-3S
Part #	BH001-BLACK BH001-DKBLUE BH001-LTBLUE BH001-RED
Power Supply*	115V 50/60 Hz
Motor	1/2 HP, 3 Speed
Amps (low, medium, high)	4.3/4.6/5.3
Cord	25 Foot, 16-3 SJTOW
Dimensions	19.5" x 14.5" x 18.25"
Product Weight	31 lbs
Shipping Weight	38 lbs
dB Rating	Low 59, Medium 62, High 64
Meets GS42	Yes

* 230V Units available

Specifications subject to change without notice.

Hawk Enterprises, Inc.

52744 Park Six Court,
Elkhart, IN 46514

Distributed By:

Toll Free Phone (888) 289-4295 Local Phone (574) 294-1910
Toll Free Fax (866) 429-5329 Local Fax (574) 970-0289



Hawk Harrier Backpack Vacuum



ELKHART, IN



Harrier 1 - Single-stage



Harrier 2 - 2-stage

The top fill design on this lightweight, compact backpack vac is designed to prevent clogging so you can optimize cleaning time. Larger than most, the 6-1/2 quart capacity extends use time and the ergonomic construction of this 10-1/2 pound vacuum makes it ideal for cleaning in small areas.

Features

- Comfortably quiet – 72 dB(A) – for use in all types of environments
- Lightweight – only 10-1/2 lbs – reduces fatigue
- Comfortable harness with padded shoulder straps and quick lock adjustable fasteners
- Exceptional filtration captures fine particles and helps improve air quality.
- Eight rubber feet for maximum air exhaust
- Short pigtail cord for easy storage
- Disposable filter paper bag or cloth bag
- Polyethylene housing with lifetime warranty is tough and durable
- Complete tool kit includes flex hose, telescopic wand, curved wand, round dusting brush, two-way flat floor tool (hard and soft floor) and crevice tool



H

A

W

K

Technical Specifications

Model#	Harrier I	Harrier II
Part#	V001-H1-115	V001-H2-115
Power Supply	115v 50/60 Hz	115v 50/60 Hz
Motor	1 - Stage, NBP, with therm.	2 - Stage NBP, with therm.
Water Lift	95.8 Inches	117.9Inches
CFM	114	144
Cord	50-foot, 16-3, yellow	50-foot, 16-3, yellow
Wand	1-1/4" 2 Piece	1-1/4" Telescopic
Hose	1-1/2" w/ Curved Wand stretches to 6 Feet Long	1-1/4" w/ Curved Wand stretches to 6 Feet Long
Filter Bags	6-1/2 Quart Cloth or Paper	6-1/2 Quart Cloth or Paper
Dimensions	8"x9"x21"	8"x9"x21"
Product Weight	10.5 lbs (Cord Not Included)	10.5 lbs (Cord Not Included)
	205 in ² Bag area	205 in ² Bag area
Shipping Weight	23 lbs	23 lbs

Specifications subject to change without notice.



V-BACK-TLKT

Hose and extension cord included with each unit.

Hawk Enterprises, Inc.

52744 Park Six Court,
Elkhart, IN 46514

Distributed By:

Toll Free Phone (888) 289-4295 Local Phone (574) 294-1910
Toll Free Fax (866) 429-5329 Local Fax (574) 970-02899

Hawk Wet/Dry Tank Vacs



H

A

W

K



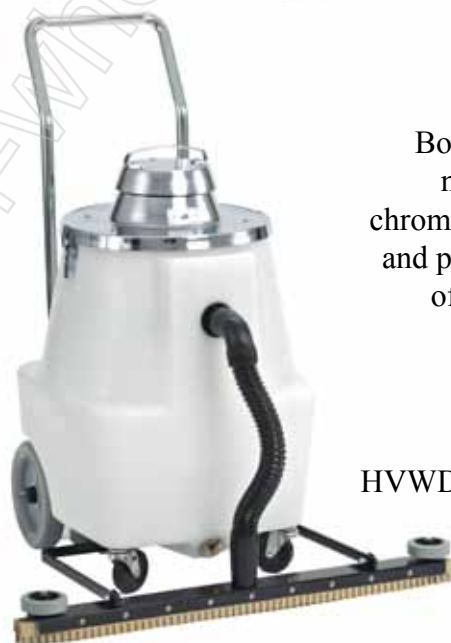
HVWD10 - 85

Non-marking wheels and casters for worry free cleaning in close quarters. Large wheels and casters make machines easy to maneuver.



HVWD15 - 105

Both units feature non-corrosive chrome-plated steel head and poly tanks for ease of cleaning and durability.



HVWD15-85 with optional front mount squeegee

Built for years of trouble-free service, these machines really clean up when it comes to value! Wet/Dry Vacs features a large selection of tools and attachments to fit every job requirement. Use them anywhere there's clean up work to be done.

Features

- Heavy duty bypass vacuum motor
- Automatic liquid shut-off prevents motor flooding with foam and/or solution
- All models have acid and mildew resistant non-pleated synthetic high efficiency filters for extra value and longer life
- HVWD10-85 & HVWD15-105 have disposable paper filter bags for easy clean up
- Complete wet/dry tool kits included



Technical Specifications

Model #	HVWD-10-85 (Extra Heavy Duty)	HVWD-15-105 (Extra Heavy Duty)
Part #	V002-10	V003-15
Power Supply*	110V 50/60Hz	110V 50/60Hz
Motor/HP	One 2-Stage Bypass 1.0 HP	One 2-Stage Bypass 2.0 HP
Amps	8.0	10.7
CFM	95	112
Water Lift	85"	105"
Cord	35 Foot, 16-3 SJTOW	35 Foot, 16-3 SJTOW
Tank Capacity	10 Gallons	15 Gallons
Drain	Yes	Yes
Recoverable Wet Capacity	10 Gallons	15 Gallons
Recoverable Dry Capacity	1.0 Bushel	1.5 Bushel
Tool Kit	Yes (2-piece aluminium wand, 1-1/2 10" crush proof hose, squeegee tool, floor tool)	Yes (2-piece aluminum wand, 1-1/2 10" crush proof hose, squeegee tool, floor tool)
Optional Front Mount Squeegee	No	(Part Number A0022)
Dimensions	18" x 18" x 24"	18" x 18" x 30"
Product Weight	45 lbs.	56 lbs.
Shipping Weight	48 lbs.	61 lbs.
dB	76	79

* 230V Units available

Specifications subject to change without notice.

Hawk Enterprises, Inc.

52744 Park Six Court,
Elkhart, IN 46514

Distributed By:

Toll Free Phone (888) 289-4295 Local Phone (574) 294-1910
Toll Free Fax (866) 429-5329 Local Fax (574) 970-0289

Hawk Wet/Dry Vacuums



Features

- | | |
|--|---|
| <ul style="list-style-type: none"> • Heavy duty bypass vacuum motor • Automatic liquid shut-off prevents motor flooding with foam and/or solution • Acid and mildew resistant non pleated synthetic high • Efficiency filters for extra value and longer life • HVWD20-117 has disposable paper filter bags for easy clean up | <ul style="list-style-type: none"> • Complete wet/dry tool kit included with HVWD20-117 • Roto-molded polyethylene tank • Non-marking 10" fixed wheels • Black, powder coated push handle and vacuum head assembly • Non-marking 4" front swivel caster wheels • 1.5" x 30" tank drain hose • Tool caddy |
|--|---|



H

A

W

K



H

A

W

K

Technical Specifications

Model #	HVWD20-117	HVWD55-117
Part #	V006-20	V006-55
Power Supply*	115V/60Hz	115V/60Hz
Motor	2 Stage, BP, 5.7, 115V, 11.0 A	2 Stage, BP, 5.7, 115V, 11.0 A
Motor CFM	110	110
Inches of Water Lift	117.1	117.1
Power Cord	50' SJT x 16-3	50' SJT x 16-3
Tank	Roto-molded polyethylene	55 Gallon steel drum
Tank Capacity	20 Gallons	55 Gallons
Recoverable Capacity	17 Gallons	51 Gallons
Optional Front Mount Squeegee	V006-FMS	N/A
Weight/ Shipping Weight	62 lbs. / 72 lbs	124 LBS. / 134 lbs
dB Rating	78	78

* 230V Units available

Specifications subject to change without notice.



20 Gallon Wet/Dry
Tool Kit
Part # - VA002



Wet/Dry With Optional
Front Mount Squeegee

Optional Drain
Valve
(55 Gallon only)



Hawk Enterprises, Inc.

52744 Park Six Court,
Elkhart, IN 46514

Distributed By:

Toll Free Phone (888) 289-4295 Local Phone (574) 294-1910
Toll Free Fax (866) 429-5329 Local Fax (574) 970-0289

Hawk Hot Shot Mini-Vactor 3.5 Gallon

1" Diameter, 8'
long, solution
hose



ELKHART, IN

Separate
3.1 gal.
solution
and 3.5 gal
recovery
tanks

1/4" Quick
disconnect

4" Stainless steel
upholstery tool



Brass and stainless
steel valve

Single
nozzle

Features:

- 2-stage 85" water lift vacuum motor, a 45 PSI oscillating pump, an 8' vacuum and solution hose, a 4" all stainless steel hand tool, and a 25' cord, all standard.
- Float ball shut off in the recovery tank protects the vacuum motor from damage, and the spin-off clean out cover allows for easy cleaning of the recovery tank at the end of each job. The recovery tank releases easily, and has a carrying handle and pour-out spout for easy emptying.
- 3-position switch allows the operator to choose from the vacuum and spray mode, off, or the pre-spray mode. There is a built-in cord wrap on the recovery tank to help store the cord neatly.

The Mini-Vactor is more than an ordinary spotter. This affordable, powerful, compact unit is designed for superior carpet and upholstery cleaning. Mini-Vactors are ideal for small to medium jobs.



H

A

W

K



H

A

W

K

Technical Specifications

79

Model #	3000B-HEAT
Solution Tank Capacity	3.1 gal
Recovery Tank Capacity	3.5 gal
Voltage	115V 60 Hz
AMP Draw	13
Heater Watts	700
Water Heater Temperature	130 °F
Vacuum Motor	1 HP, 2-stage
Water Lift	85"
Solution Pump Type	Oscillating
Solution Pump P.S.I	45
Power Cord	25' 16/3
Weight	27 lbs
Construction	Rotational molded polyethylene
Switch	3-position switch (vacuum motor & pump, off, pump only)
Dimensions	9" x 18" x 20"
Solution & Vac Hose Set	8' solution & vacuum hose included
Hand Tool	All stainless steel hand tool included
Optional Wand	EXTCR-WAND-10SS pictured below

Specifications subject to change without notice.

**** NOTE: No-heat unit available by special request only ****



PART#
EXTCR-WAND-10SS

The 2-piece stainless steel wand features a 10" stainless steel head. It comes with an 10' solution and vacuum hose set. This accessory is great for larger clean up jobs where space is limited.

Hawk Enterprises, Inc.

52744 Park Six Court,
Elkhart, IN 46514

Distributed By:

Toll Free Phone (888) 289-4295 Local Phone (574) 294-1910
Toll Free Fax (866) 429-5329 Local Fax (574) 970-0289



Hawk Talon Floor Machine



Included Accessories



50' Power Cord



Pads
(1 of Each)



Pad Driver

The Talon Edger can be set up with different accessories for any cleaning challenge. It comes with a pad driver and assorted pads to get you started. Built-up dirt in corners and on baseboards can be cleaned without bending and back-breaking effort.

Features:

- Enclosed gear belt drive that is durable
- Heavy duty molded housing is virtually indestructible
- 500 rpm brush speed delivers powerful performance
- 50-foot detachable power cord
- Quiet operation and powerful cleaning capabilities
- Ergonomic design and light weight makes this machine an ideal for anyone to use

H

A

W

K



H

A

W

K

Technical Specifications

Model#	Talon-6	Talon-8
Part#	F0036-115-6	F0036-115-8
Power Supply Input	115v 50/60 Hz AC	115v 50/60 Hz AC
Motor*	1/8 HP, 115V DC, 1.14A	1/8 HP, 115V DC, 1.14A
Cord	50', 16-3, Black, 2-Peice	50', 16-3, Black, 2-Peice
Brush	6 Inch	8 Inch
Brush Speed	500	500
Dimensions	6" x 11" x 47" adjustable to 52"	6" x 11" x 47" adjustable to 52"
Weight	10.5 lbs (Cord Not Included In Weight)	10.5 lbs (Cord Not Included In Weight)
Shipping Weight	19 lbs	20 lbs

* 230V Units available

Specifications subject to change without notice.

Accessories

Model#	Talon-6	Talon-8
SolutionTank	A0001-TALON	A0001-TALON
Grit Edger Brush	AS001-6	AS001-8
Nylon Brush	AS002-6	AS002-8
Pad Driver	AS003-6	AS003-8
Grit Brush	AS005-6	AS005-8
Nylon Edger Brush	AS006-6	AS006-8
Bonnet (case of 6)	AS008-6	AS008-8
Red Scrub Pads (Case of 5)	AS009-6	AS009-8
Black Strip Pads (Case of 5)	AS010-6	AS010-8
White Polish Pads (Case of 5)	AS011-6	AS011-8

Optional Accessories



Nylon Brush



Grit Brush



Nylon Edger



Grit Edger



Bonnet

Hawk Enterprises, Inc.

52744 Park Six Court,
Elkhart, IN 46514

Distributed By:

Toll Free Phone (888) 289-4295 Local Phone (574) 294-1910
Toll Free Fax (866) 429-5329 Local Fax (574) 970-0289



Hawk Floor Machine Accessories

FLOOR MACHINE PAD DRIVERS (CONTINUED)



Top View

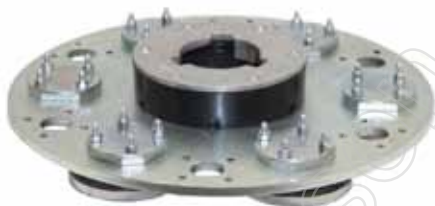
Weighted Diamond Pad Driver:

13"	A0017WTDPD (25#)
15"	N/A
17"	A0010WTDPD (46#)
20"	A0011WTDPD (64#)



Applix Face

FLOOR MACHINE SPECIALTY DRIVERS



Top View

Orbitec Diamond Driver:

13"	HP0018-3
15"	N/A
17"	HP0017-3
20"	HP0020-3



6 Independently
Rotating Applix Faces



Top View

Hawk Scrapers (Surface Prep):

13"	HP0035
15"	N/A
17"	HP0033
20"	HP0034

A0033RC 3 Pack
Replacement Cutters



6 1-Inch Cutting
Heads (Option of 6
Additional Cutter For
a Total of 12)

ACCESSORIES



Hawk Floor Machine Accessories

FLOOR MACHINE BRUSHES


Poly Brush:

13"	A0020
15"	A0036
17"	A0002
20"	A0003


Polish Brush:

13"	A0021
15"	A0035
17"	A0004
20"	A0005


Nylon Brush:

13"	A0016
15"	A0037
17"	A0006
20"	A0007


Grit (80) Brush:

13"	A0018
15"	A0038
17"	A0008
20"	A0009

FLOOR MACHINE PAD DRIVERS


Economy Pad Driver

13"	N/A
15"	N/A
17"	A0010ECC
20"	A0011ECC


Tri-Lok Pad Driver:

13"	N/A
15"	N/A
17"	A0010-2
20"	A0011-4


Mighty-Loc

10"	A0047M
13"	A0017
15"	A0034
17"	A0010
20"	A0011


High Speed

13"	N/A
15"	N/A
17"	A0010-3
20"	A0011-1


Economy Sand Paper:

13"	N/A
15"	N/A
17"	A0014
20"	A0014-1


Heavy Duty Sand Paper

13"	N/A
15"	N/A
17"	A0014-HD
20"	A0014-1HD



Hawk Floor Machine Accessories

Floor Machine Pads



Pads: (5 Per Case)			
Size	Hogs Hair	Red	Black
13"	A0025-13P	A0026-13R	A0027-13BK
15"	A0025-15P	A0026-15R	A0027-15BK
17"	A0025-17P	A0026-17R	A0027-17BK
19"	A0025-19P		
20"	A0025-20P	A0026-20R	A0027-20BK

Floor Machine Screens



Available Sizes

13"
15"
17"
20"

Raptor & TigerHawk Pads

White	A0065-1410-CS	A0065-2014-CS	A0065-2814-CS
Red	A0066-1410-CS	A0066-2014-CS	A0066-2814-CS
Blue	A0067-1410-CS	A0067-2014-CS	A0067-2814-CS
Green	A0068-1410-CS	A0068-2014-CS	A0068-2814-CS
Black	A0069-1410-CS	A0069-2014-CS	A0069-2814-CS
Light Hoghair	A0070-1410-CS	A0070-2014-CS	A0070-2814-CS
Safire	A0071-1410-CS	A0071-2014-CS	A0071-2814-CS
Green Astro	A0072-1410-CS	A0072-2014-CS	A0072-2814-CS
Red Heat Screen - 80 Grit	A0074-1410-80	A0074-2014-80-	A0074-2814-80
Red Heat Screen - 120 Grit	A0074-1410-180	A0074-2014-180	A0074-2814-80

ACCESSORIES



ACCESSORIES

Hawk Solution Tanks

4 Gallon Solution Tanks



ELKHART, IN



A0001-RED4



A0001-NAT4



A0001-DKBLUE4



A0001-BLK4



A0001-YEL4



A0001-CHAR4



A0001-LTBLUE4

2.5 Gallon Tank for Raptors



A0001-RAPBLK2.5

2 Gallon Tanks for Telescopic Units



A0001-EYASBLK2



Hawk Floor Machine Accessories



ELKHART, IN



A0028-10P
10# Weight
for weight
post kit



A0028-25P
25# Weight
for weight
post kit



A0032-2P
20# Frame
Weight



A0032-1P
25#
Horseshoe
Weight

A0032-3P
36# Horseshoe
Weight
(Only for 20
inch units)



Weight Mounting Systems



HP0008-45INSTAND



A0028-25 Shown on a
HP0008-45INSTAND



HP0008-45INBRUTE



A0028-25 Shown on a
HP0008-45INBRUTE

ACCESSORIES



Hawk Floor Machine Accessories

Floor Machine Dust Pick-up Systems



Dust Pick-up System For a Standard
and High Speed Machines



Standard Floor
Machine

Dust Pick-up Systems Size:	Part Number:
17" Standard Machine	HP0031-DC17-STANDKIT
20" Standard Machine	HP0031-DC20-STANDKIT



High Speed
Burnisher

Dust Pick-up Systems Size:	Part Number:
17" Brute Machine	HP0031-DC17-BRUTEKIT
20" Brute Machine	HP0031-DC20-BRUTEKIT



Dust Pick-up System For a BRUTE
Machines



Brute/TEXHD



ACCESSORIES

Hawk Floor Machine Accessories

Floor Machine Splash Guards



Splash Guard With No Lip For
Weighted Machines Only



Splash Guard With Lip For
Non-Weighted Machines

Splash Guard Size:	Part Number:
13"	Splash13
15"	Splash15
17"	Splash17
17" (For Weighted Machines)	Splash17NL
20"	Splash20



Burnisher Shown With
Splash Guard



Floor Machine Shown
With Splash Guard

Hawk Enterprises, Inc.

52744 Park Six Court,
Elkhart, IN 46514

Distributed By:

Toll Free Phone (888) 289-4295 Local Phone (574) 294-1910
Toll Free Fax (866) 429-5329 Local Fax (574) 970-0289



Johnson Wholesale
1 (828) 283 1999

