

Bissell®

BigGreen Commercial™

2014 Catalog



Johnson Wholesale
1 (823) 233 1999





If you do not see any of these products on our web site just call us.
We will be glad to price the product for you.

Thanks For your interest.



Bissell®

BigGreen Commercial™

14" *Lightweight Upright*



- Lightweight design (10 lbs).
- Constructed with polycarbonate resin for added durability and lightweight.
- Low profile lay-flat.
- Ergonomic frame and handle.
- Ametek 4.6 amp paramagnetic direct air motor with thermal overload protection.
- Ametek 3.23" impeller and impeller housing construct with Lexan resin.
- Life time belt with brush roll jam indicator and auto shut-off.
- Static pressure sensor bag fill indicator.
- Patented sealed filter bag system with bag safety design.
- 40' power cord.

Specifications

Model:	BGU5500
Motor:	4.6 amps
Motor Hood:	Gray
Handle:	Ergonomic
Vacuum Width:	14 inches
Weight:	10 lbs.
Power Cord:	40 feet
Brush Drive:	Belt
UPC:	811827020009

Bissell®

BigGreen Commercial™

12" ProTough Upright

- Powerful 870-watt motor.
- Heat overload protection system.
- Reinforced fan. (Virtually Indestructible with life time warranty)
- Straight handle.
- Non-Stick cloth bag. (Shakeout)
- 50 foot long power cord with cord strain relief allows for 100 feet of cleaning area.
- Aluminum roller brush with four bristle strips and double ball bearings.
- 12" cleaning path.
- Large rear wheels make transportation easy.
- 6 position manual carpet height adjustment.
- Painted black metal hood with "V" shaped motor vents.
- Reinforced see-thru fan chamber for fast cleaning.
- Metal on / off foot switch.
- Metal foot release pedal made from hardened steel.
- Metal bottom plate.
- 1 Year warranty.

Specifications

Model:	BG100
Motor:	870 watt
Motor Hood:	Black
Handle:	Straight
Vacuum Width:	12 inches
Weight:	13.5 lbs.
Power Cord:	50 feet
Bag:	Non-Stick
Roller Brush:	Aluminum
Brush Drive:	Belt
Carpet Height Adjustment:	Yes
Magnet bar:	No
UPC:	011120164824



Bissell®

BigGreen Commercial™

12" ProShake Upright

- Powerful 870-watt motor.
- Heat overload protection system.
- Reinforced fan (Virtually Indestructible with life time warranty).
- Comfort Grip handle for easy use.
- Non-Stick cloth bag. (Shakeout)
- 50 foot long power cord with cord strain relief allows for 100 feet of cleaning area.
- Aluminum roller brush with four bristle strips and double ball bearings.
- 12" cleaning path.
- Large rear wheels make transportation easy.
- 6 position manual carpet height adjustment.
- Chrome metal hood with "V" shaped motor vents.
- Reinforced see-thru fan chamber for fast cleaning.
- Metal on / off foot switch.
- Metal foot release pedal made from hardened steel.
- Metal bottom plate.
- Magnet bar.
- 1 Year warranty.



Specifications

Model:	BG101
Motor:	870 watt
Motor Hood:	Chrome
Handle:	Comfort Grip
Vacuum Width:	12 inches
Weight:	14.5 lbs.
Power Cord:	50 feet
Bag:	Non-Stick
Roller Brush:	Aluminum
Brush Drive:	Belt
Carpet Height Adjustment:	Yes
Magnet Bar:	Yes
UPC:	011120157871



Bissell®

BigGreen Commercial™

12" ProBag Upright

- Powerful 870-watt motor.
- Heat overload protection system.
- Reinforced fan (Virtually Indestructible with life time warranty).
- Comfort Grip handle for easy use.
- Top fill High Filtration disposable filter bag.
- 50 foot long power cord with cord strain relief allows for 100 feet of cleaning area.
- Aluminum roller brush with four bristle strips and double ball bearings.
- 12" cleaning path.
- Large rear wheels make transportation easy.
- 6 position manual carpet height adjustment.
- Chrome metal hood with "V" shaped motor vents.
- Reinforced see-thru fan chamber for fast cleaning.
- Metal on / off foot switch.
- Metal foot release pedal made from hardened steel.
- Metal bottom plate.
- Magnet bar.
- 1 Year warranty.



Specifications

Model:	BG101H
Motor:	870 watt
Motor Hood:	Chrome
Handle:	Comfort Grip
Vacuum Width:	12 inches
Weight:	14.5 lbs.
Power Cord:	50 feet
Filter Bag:	High Filtration
Roller Brush:	Aluminum
Brush Drive:	Belt
Carpet Height Adjustment:	Yes
Magnet Bar:	Yes
UPC:	011120164732



Bissell®

BigGreen Commercial™

12" DayClean / Quiet Clean Upright

- Powerful 5.5 amp motor.
- Sound pressure 68 dBA
- Heat overload protection system.
- Reinforced fan (Virtually Indestructible with life time warranty).
- Comfort Grip handle for easy use.
- Top fill High Filtration disposable filter bag.
- 50 foot long power cord with cord strain relief allows for 100 feet of cleaning area.
- Aluminum roller brush with four bristle strips and double ball bearings.
- 12" cleaning path.
- Large rear wheels make transportation easy.
- 6 position manual carpet height adjustment.
- Chrome metal hood with "V" shaped motor vents.
- Reinforced see-thru fan chamber for fast cleaning.
- Metal on / off foot switch.
- Metal foot release pedal made from hardened steel.
- Metal bottom plate.
- Magnet bar.
- 1 Year warranty.



Specifications

Model:	BG107HQS
Sound Pressure :	68dBA
Motor:	5.5 amps
Motor Hood:	Chrome
Handle:	Comfort Grip
Vacuum Width:	12 inches
Weight:	14.5 lbs.
Power Cord:	50 feet
Filter Bag:	High Filtration
Roller Brush:	Aluminum
Brush Drive:	Belt
Carpet Height Adjustment:	Yes
Magnet Bar:	Yes
UPC:	011120164718



Bissell®

BigGreen Commercial™

12" ProCup Upright

- Powerful 870-watt motor.
- Heat overload protection system.
- Reinforced fan (Virtually Indestructible with life time warranty).
- Comfort Grip handle for easy use.
- Dirt cup design.
- 50 foot long power cord with cord strain relief allows for 100 feet of cleaning area.
- Aluminum roller brush with four bristle strips and double ball bearings.
- 12" cleaning path.
- Large rear wheels make transportation easy.
- 6 position manual carpet height adjustment.
- Chrome metal hood with "V" shaped motor vents.
- Reinforced see-thru fan chamber for fast cleaning.
- Metal on / off foot switch.
- Metal foot release pedal made from hardened steel.
- Metal bottom plate.
- Magnet bar.
- 1 Year Warranty.

Specifications

Model:	BG101DC
Motor:	870 watt
Motor Hood:	Chrome
Handle:	Comfort Grip
Vacuum Width:	12 inches
Weight:	14.5 lbs.
Power Cord:	50 feet
Dirt Cup:	Yes
Roller Brush:	Aluminum
Brush Drive:	Belt
Carpet Height Adjustment:	Yes
Magnet Bar:	Yes
UPC:	011120164725



Bissell®

BigGreen Commercial™

16" ProShake Upright

- Powerful 870-watt motor.
- Heat overload protection system.
- Reinforced fan (Virtually Indestructible with life time warranty).
- Comfort Grip handle for easy use.
- Non-Stick cloth bag. (Shakeout)
- 50 foot long power cord with cord strain relief allows for 100 feet of cleaning area.
- Aluminum roller brush with four bristle strips and double ball bearings.
- 16" cleaning path.
- Large rear wheels make transportation easy.
- 6 position manual carpet height adjustment.
- Chrome metal hood with "V" shaped motor vents.
- Reinforced see-thru fan chamber for fast cleaning.
- Metal on / off foot switch.
- Metal foot release pedal made from hardened steel.
- Metal bottom plate.
- Magnet bar.
- 1 Year warranty.



Specifications

Model:	BG102
Motor:	870 watt
Motor Hood:	Chrome
Handle:	Comfort Grip
Vacuum Width:	16 inches
Weight:	16.5 lbs.
Power Cord:	50 feet
Bag:	Non-Stick
Roller Brush:	Aluminum
Brush Drive:	Belt
Carpet Height Adjustment:	Yes
Magnet Bar:	Yes
UPC:	011120164756



Bissell®

BigGreen Commercial™

16" ProBag Upright

- Powerful 870-watt motor.
- Heat overload protection system.
- Reinforced fan (Virtually Indestructible with life time warranty).
- Comfort Grip handle for easy use.
- Top fill High Filtration disposable filter bag.
- 50 foot long power cord with cord strain relief allows for 100 feet of cleaning area.
- Aluminum roller brush with four bristle strips and double ball bearings.
- 16" cleaning path.
- Large rear wheels make transportation easy.
- 6 position manual carpet height adjustment.
- Chrome metal hood with "V" shaped motor vents.
- Reinforced see-thru fan chamber for fast cleaning.
- Metal on / off foot switch.
- Metal foot release pedal made from hardened steel.
- Metal bottom plate.
- Magnet bar.
- 1 year warranty



Specifications

Model:	BG102H
Motor:	870 watt
Motor Hood:	Chrome
Handle:	Comfort Grip
Vacuum Width:	16 inches
Weight:	17 lbs.
Power Cord:	50 feet
Filter Bag:	High Filtration
Roller Brush:	Aluminum
Brush Drive:	Belt
Carpet Height Adjustment:	Yes
Magnet Bar:	Yes
UPC:	011120164749



Bissell®

BigGreen Commercial™

16" DayClean / Quiet Clean Upright

- Powerful 5.5 amp motor.
- Sound pressure 68 dBA
- Heat overload protection system.
- Reinforced fan (Virtually Indestructible with life time warranty).
- Comfort Grip handle for easy use.
- Top fill High Filtration disposable filter bag.
- 50 foot long power cord with cord strain relief allows for 100 feet of cleaning area.
- Aluminum roller brush with four bristle strips and double ball bearings.
- 16" cleaning path.
- Large rear wheels make transportation easy.
- 6 position manual carpet height adjustment.
- Chrome metal hood with "V" shaped motor vents.
- Reinforced see-thru fan chamber for fast cleaning.
- Metal on / off foot switch.
- Metal foot release pedal made from hardened steel.
- Metal bottom plate.
- Magnet bar.
- 1 Year warranty.



Specifications

Model:	BG107-16HQS
Sound Pressure :	68dBA
Motor:	5.5 amps
Motor Hood:	Chrome
Handle:	Comfort Grip
Vacuum Width:	16 inches
Weight:	14.5 lbs.
Power Cord:	50 feet
Filter Bag:	High Filtration
Roller Brush:	Aluminum
Brush Drive:	Belt
Carpet Height Adjustment:	Yes
Magnet Bar:	Yes
UPC:	011120164596



Bissell®

BigGreen Commercial™

16" ProCup Upright

- Powerful 870-watt motor.
- Heat overload protection system.
- Reinforced fan (Virtually Indestructible with life time warranty).
- Comfort Grip handle for easy use.
- Dirt cup design.
- 50 foot long power cord with cord strain relief allows for 100 feet of cleaning area.
- Aluminum roller brush with four bristle strips and double ball bearings.
- 16" cleaning path.
- Large rear wheels make transportation easy.
- 6 position manual carpet height adjustment.
- Chrome metal hood with "V" shaped motor vents.
- Reinforced see-thru fan chamber for fast cleaning.
- Metal on / off foot switch.
- Metal foot release pedal made from hardened steel.
- Metal bottom plate.
- Magnet bar.
- 1 year warranty



Specifications

Model:	BG102DC
Motor:	870 watt
Motor Hood:	Chrome
Handle:	Comfort Grip
Vacuum Width:	16 inches
Weight:	17.5 lbs.
Power Cord:	50 feet
Dirt Cup:	Yes
Roller Brush:	Aluminum
Brush Drive:	Belt
Carpet Height Adjustment:	Yes
Magnet Bar:	Yes
UPC:	011120164701



Bissell®

BigGreen Commercial™

ProTough, ProShake, ProBag & ProCup Uprights

- Powerful 870-watt motor .
- Heat overload protection system.
- Reinforced fan (Virtually Indestructible with life time warranty).
- Straight or Comfort Grip handle.
- Non-Stick cloth bag (Shakeout), High Filtration bag or Dirt Cup.
- 50 foot long power cord with cord strain relief allows for 100 feet of cleaning area.
- Aluminum roller brush with four bristle strips and double ball bearings.
- 12" or 16" cleaning path.
- Large rear wheels make transportation easy.
- 6 position manual carpet height adjustment.
- Painted black or chrome metal hood with "V" shaped motor vents.
- Reinforced see-thru fan chamber for fast cleaning.
- Metal on / off foot switch.
- Metal foot release pedal made from hardened steel.
- Metal bottom plate.
- Magnet bar on OR101 and OR102.



BG100

BG101
BG102 – 16"BG101DC – 12"
BG102DC – 16"BG101H – 12"
BG102H – 16"

Specifications

Model:	BG100	BG101	BG101DC	BG101H	BG102	BG102DC	BG102H
Motor:	870 watt	870 watt	870 watt	870 watt	870 watt	870 watt	870 watt
Motor Hood:	Black	Chrome	Chrome	Chrome	Chrome	Chrome	Chrome
Handle:	Straight	Comfort Grip	Comfort Grip	Comfort Grip	Comfort Grip	Comfort Grip	Comfort Grip
Vacuum Width:	12 inches	12 inches	12 inches	12 inches	16 inches	16 inches	16 inches
Weight:	13.5 lbs.	14.5 lbs.	15.5 lbs.	15 lbs.	16.5 lbs.	17.5 lbs.	17 lbs.
Power Cord:	50 feet	50 feet	50 feet	50 feet	50 feet	50 feet	50 feet
Bag:	Non-Stick (Shake-out)	Non-Stick (Shake-out)	Dirt Cup	High Filtration Disposable	Non-Stick	Dirt Cup	High Filtration Disposable
Roller Brush:	Aluminum	Aluminum	Aluminum	Aluminum	Aluminum	Aluminum	Aluminum
Brush Drive:	Belt	Belt	Belt	Belt	Belt	Belt	Belt
Carpet Height Adjustment:	Yes	Yes	Yes	Yes	Yes	Yes	Yes
Magnet Bar:	No	Yes	Yes	Yes	Yes	Yes	Yes

Bissell®

BigGreen Commercial™



Single Motor Upright with On-Board Tools

- Single motor unit with motor in brush roller base for low handle weight.
- Powerful 1,000-watt motor deep cleans in just one pass.
- Auto motor shutoff when machine is clogged.
- Body constructed out of high impact ABS.
- Belt driven brush roller.
- Manual brush roller height adjustment.
- Soft touch Comfort Grip® handle with height adjustment.
- Full set of attachment includes upholstery brush, dusting brush and crevice tool.
- Attachment storage designed to store in back of vacuum.
- Telescopic wand and stretch hose extends more than 9 feet for convenient above-the-floor cleaning.
- 48-ft. long (quick change – no tools required) power cord with cord strain relief allows for 96 feet of cleaning area.

**2 YEAR
COMMERCIAL
WARRANTY**

Specifications

Vacuum Width:	12 inches
Weight:	17 lbs.
Power Cord:	48 feet
Sound:	68 Db(A)
CFM:	105
Water Lift:	78.75"
Brush Drive:	Non-slip belt
Dust Bag Capacity:	6.44 Quarts
Carpet Height Adjustment:	Yes
UPC:	011120053043

BGUPRO 12T



Bissell®

BigGreen Commercial™

14" or 18" Dual Motor Upright with On-Board Tools

Durable Dual-Motor Complete Cleaning System

- Powerful 1000-watt dual motor deep cleans in just one pass.
- Full set of attachment includes upholstery brush, dusting brush and crevice tool.
- Telescopic wand and stretch hose extends more than 9 feet for convenient above-the-floor cleaning.
- Dual-wall disposable bag holds up to 6.16 quarts of dirt.
- 46-ft. long (quick change – no tools required) power cord with cord strain relief allows for 92 feet of cleaning area.
- Roller brush motor automatically turns off protecting the carpet when the tools are being used.
- 14" or 18" cleaning path for faster cleaning.
- Large rear wheels make transportation easy.
- Manual carpet height adjustment.
- Non-slip belt with overload protection.
- Electronic sensors detect a broken belt or blocked air flow.
- Convenient modular component system requires no tools to disassemble. Easy to trouble shoot a blockage or repair.
- Balanced center of gravity prevents tipping when using accessories.
- High efficiency filtration includes motor inlet filter and dual wall disposable bags.

2 YEAR COMMERCIAL WARRANTY

Specifications

Model:	BGUPRO14T	BGUPRO18T
CFM:	95	95
Water Lift:	115 inches	115 inches
Vacuum Width:	14 inches	18 inches
Weight:	19 lbs.	20 lbs.
Power Cord:	46 feet	46 feet
Dust Bag Capacity:	6.16 Quarts	6.16 Quarts
Sound:	67 Db(A)	67 Db(A)
Brush Drive:	Non-slip belt with overload protection	
Carpet Height Adjustment:	Yes	Yes
UPC:	011120053005	



Bissell®

BigGreen Commercial™

15" Dual Motor Upright with On-Board Tools

Durable Dual-Motor Complete Cleaning System

- Heavy-duty commercial vacuum
- Two-motor system
- 120V, 1080W, 9A
- 15-inch cleaning path – efficient, wide-path clean
- Sleek foot, cleans under furniture
- Comfort-clean handle
- 50-foot professional extension cord for 100 feet of cleaning reach
- Quick and easy cord change
- Plastic wand for longer reach
- Durable drive belt – built to last
- Reaches into corners and crevices with L-shaped head
- Vacuum head adjusts to suit flooring
- Comfortable handle for a comfortable clean
- Full handle detent – vacuum reaches under beds and furniture
- Wire-reinforced hose stretches up to 6 feet to maximize cleaning reach
- 2-in-1 upholstery tool
- Crevice tool for hard-to-reach cleaning



Specifications

Model:	BG1000
CFM:	95
Water Lift:	115 inches
Vacuum Width:	15 inches
Weight:	19 lbs.
Power Cord:	50 feet
Dust Bag Capacity:	4.75 Quarts
Sound:	67 Db(A)
Brush Speed:	5,000 RPM
Brush Drive:	Non-slip belt with overload protection
Carpet Height Adjustment:	Yes
UPC:	01120167238

**2 YEAR COMMERCIAL
WARRANTY**

Bissell®

BigGreen Commercial™

6 or 10 Quart Backpack Vacuums

***A commercial vacuum designed for all-around use.
The latest ergonomic design offering
the technical edge in cleaning.***

- Lightweight only 10-12 lbs! More freedom of movement means an increase in productivity and reduced labor cost.
- Perfect for casinos, hotels, motels, hospitals, offices, airports and anywhere that calls for multi-use cleaning task.
- Shoulder strap support plus the added stability of an ergonomic waist belt that helps balance the unit on operator's hips.
- Long 50 ft. cord gives you more mobility over large areas.
- Static dissipating stretch molded vacuum hose.
- Lightweight aluminum wand connected to the backpack by a flexible hose makes it easily maneuverable around furniture and other obstacles.
- 4-level filtration system reduces the dust and dirt from being exhausted back into the room. Microlined paper filter lasts longer and stays stronger under heavy use.



Our lightweight aluminum wand makes overhead cleaning an ease. Vents, ceiling fans and other difficult places are no match for the versatile PRO™ Backpack Vacuum.



Weights only 10 – 12 lbs. Lightweight and ergonomic support enables the operator greater mobility leading to increased production and reduced labor cost.

Specifications:

	BGPRO10	BGPRO6
Capacity:	10 quarts	6 quarts
Weight:	12 lbs.	10 lbs.
Height:	23"	23"
Contoured Ergonomic Backrest:	Yes	Yes
50' Power Cord (16 gauge):	Yes	Yes
Two-Stage Whisper Motor:	Yes	Yes
Power (Watts):	1200	1200
Airflow (CFM):	122	122
UPC:		



Bissell®

BigGreen Commercial™

6 or 10 Quart Backpack Vacuums

A commercial vacuum designed for all-around use.

- Lightweight only 9.5 -10.5 lbs!
- Perfect for casinos, hotels, motels, hospitals, offices, airports and anywhere that calls for multi-use cleaning task.
- Ametek motor with built in heat sensor.
- Patent pending adjustable shoulder strap & waist belt design so the machine rests off your back.
- 50' cord gives you more mobility over large areas.
- 1 ½" crushproof 4' vacuum hose with swivel cuffs.
- Twist off lid.
- Lightweight aluminum wand connected to the backpack by a flexible hose makes it easily maneuverable around furniture and other obstacles.
- On/Off switch with power nozzle hook up for easy finger tip control.
- Switch & waist belt Velcro to each other for comfortable switch placement.
- High Filtration filter bags available.



Specifications:	BG1001	BG1006
Capacity:	10 quarts	6 quarts
Weight:	10.5 lbs.	9.5 lbs.
Height:	26"	22"
50' Power Cord (16 gauge)	Yes	Yes
8 Piece Tool Kit:	Yes	Yes
Power (Watts):	1175	1175
Amps:	10.2	10.2
Airflow (CFM):	120	120
Water Lift:	110-120	110-120
Warranty:	1 year	1 year
UPC:	011120167252	011120167245

Comes with 8 Piece Tool Kit



Bissell®

BigGreen Commercial™

Power Nozzle for Backpack Vacuums

WORKS WITH BACKPACKS BG1006 & BG1001

The Power Nozzle has a geared belt for long life, a circuit breaker to protect motor, belt and roller from clogs and jams. A large 15 inch cleaning path for quicker clean time. Quick disconnect lever on Power Nozzle neck.

- Commercial geared 15 inch power nozzle with upper Sheath assembly and lower wand
- 1 ½" – 1 ¼" reducer handle that fits on hose cuff
- Power cord assembly connects to switch box on backpack
- Built-In storage ring for convenient wall mounting
- Double row of bristles for rug and floor cleaning



BGBPAK1

Bissell®

BigGreen Commercial™

Canister Vacuum

Designed for commercial cleaning companies, Salons, Spas, Barber Shops, Hotels, Schools, Cafes, Restaurants and Healthcare professionals.



- Versatile machine – Cleans carpet, upholstery and more
- On-board cleaning tools included: crevice tool, upholstery tool, dusting brush, combination floor tool, metal telescoping wand
- Combo floor tool – Control the brush height while cleaning different floor types
- Suction power options Control at wand
- Quiet and lightweight
- Disposable 1.94-gallons capacity dirt bag
- 1200 watts



**Optional Air
Driven
Brush Roller**

Specification

Motor:	BGCOMP 9 1.6 HP Double Stage
Water Lift:	98.4"
CFM:	106
Bag Capacity:	1.94 gallon
Hose Length:	8 feet
Power Cord:	50 feet
Filtration:	3 Stages
Sound Level:	60 db
UPC:	011120053036



Bissell®

BigGreen Commercial™

LITTLE HERCULES

Canister Vacuums

Powerful Small Canister Vacuum on Wheels

The “Little Hercules” compact design, powerful suction, and low maintenance disposal system provides a great solution for when an extra vacuum is needed. The Little Hercules is a handheld canister with wheels that puts dust busters to shame! It is ultra-portable and super-powerful. It has 5 foot extension hose, and suction control provides versatility for all surface types. It also has 2-in-1 floor tool and two extension wands for those hard to reach places and a 15 foot power cord and a carry handle for easy use. Permanent wheels for easy maneuverability (2 rear wheels with a steering wheel).



Part Number	BGC2000
Motor	1000 watts
Power cord	15 feet
Sound Pressure	84 DBA
Replacement Filter	PETVACFILTS
FOB	Cookeville, TN
UPC Number	811827-

Bissell®

BigGreen Commercial™

EXTRA WIDE VACUUM!

Designed to clean large areas quickly and efficiently.

Engineered for long service life under rugged conditions.

Powered by strong 8.5 amp motor. (2,000 hour motor brush life)

Saves you up to 80% of your time compared to using conventional upright on the same job.

- Efficient grooming chevron brush
- Air velocity enhancer edge cleaning
- Floating brush barrier
- Balanced extruded brush roller
- Rugged 360° front swivel wheels for short turning radius'
- 5 position height adjustment
- Fold-down-handle
- Quick release filter mounting strap
- Dust retentive felt, heavy duty outer filter
- Welded steel frame in structural foam housing
- Industrial quality universal motor with cast metal fan
- Protective wrap-around bumper guards
- Top-fill system eliminates clogging at intake – assures maximum pickup performance
- Multiple sizes 24" & 28"
- Warranty - 2 year on motor & fan, 1 year overall, belt & brushes not covered under warranty

Specification

SKU Number:	BGCC24	BGCC28
Cleaning Path:	24"	28"
Weight:	55 lbs.	57 lbs.
Length:	36"	36"
Width:	25"	29"
Height:	36 1/2"	36 1/2"
Motor:	5/8 HP	5/8 HP
AMPS:	8.5	8.5
CFM:	200	200
Brush RPM:	3,500	3,500
Brush Diameter:	3"	3"
Brush:	Chevron	Chevron
Height Settings:	5 Settings, 0 – 1.25"	
Power Cord:	60'	60'
Sound:	70 Db(A)	78 Db(A)



Bissell®

BigGreen Commercial™

**NO
ELECTRICITY
NEEDED**

BG255

Highly Efficient, Easy To Operate, 21" Wide, Dual Brush System Sweeper

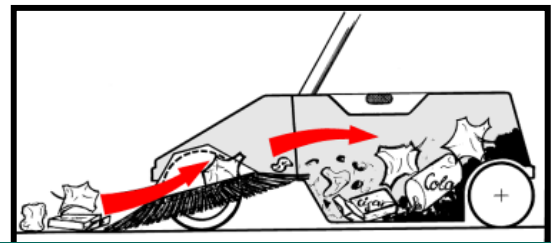
The two brushes rotate in opposite directions grabbing the debris directly in front of the sweeper then deposits the debris into the easy to empty 6.6 gallon container.

- 21" wide
- 6.6 gallon debris container
- Sweeps fine & coarse dirt
- Sweeps wet & dry leaves
- Side rollers that make sweeping along walls an ease
- Belt free system
- Light weight for easy use
- Stand up storage design for easy storage
- Comes with lubricant spray
- 4 year warranty on brushes
- 2 year overall warranty



Specifications

Model: BG255
Width: 21 inches
Weight: 13.2 lbs.
Container Capacity: 6.6 Gallons
Roller Brush: Fiberglass
Height Adjustment: Yes
Side Rollers: Yes



Bissell®

BigGreen Commercial™

**NO
ELECTRICITY
NEEDED**

BG477

Deluxe Turbo Sweeper, Easy To Operate, 31" Wide, Triple Brush System Sweeper

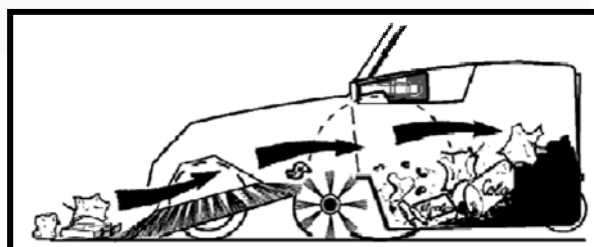
The patented Turbo sweeping system sweeps twice with one move!

The two front brushes rotate in opposite directions grabbing the debris directly in front of the sweeper while the brush roller on the bottom picks up all the fine particles, all the debris is then deposited into the large easy to empty 13.2 gallon container.

- 31" wide
- 13.2 gallon debris container
- Ergonomic push handle
- Sweeps fine & coarse dirt
- Sweeps wet & dry leaves
- Side rollers that make sweeping along walls an ease
- Belt free system
- Light weight for easy use
- Stand up storage design for easy storage
- Comes with lubricant spray
- 4 year warranty on brushes
- 2 year overall warranty

Specifications

Model: BG477
Width: 31 inches
Weight: 38 lbs.
Container
Capacity: 13.2 Gallons
Roller Brush: Fiberglass
Height
Adjustment: Yes
Side Rollers: Yes



Bissell®

BigGreen Commercial™

**NO
ELECTRICITY
NEEDED**

BG497

Deluxe Turbo Sweeper, Easy To Operate, 38" Wide, Triple Brush System Sweeper

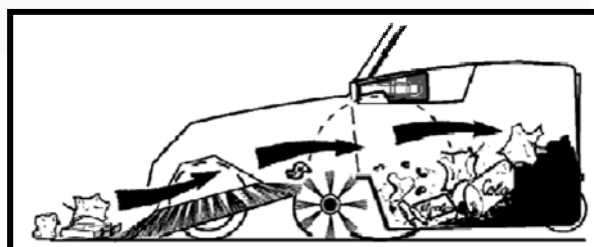
The patented Turbo sweeping system sweeps twice with one move!

The two front brushes rotate in opposite directions grabbing the debris directly in front of the sweeper while the brush roller on the bottom picks up all the fine particles, all the debris is then deposited into the large easy to empty 13.2 gallon container.

- 38" wide
- 13.2 gallon debris container
- Ergonomic push handle
- Sweeps fine & coarse dirt
- Sweeps wet & dry leaves
- Side rollers that make sweeping along walls an ease
- Belt free system
- Light weight for easy use
- Stand up storage design for easy storage
- Comes with lubricant spray
- 4 year warranty on brushes
- 2 year overall warranty

Specifications

Model: BG477
Width: 31 inches
Weight: 43 lbs.
Container
Capacity: 13.2 Gallons
Roller Brush: Fiberglass
Height
Adjustment: Yes
Side Rollers: Yes



Bissell®

BigGreen Commercial™

**Battery
Powered**

BG677

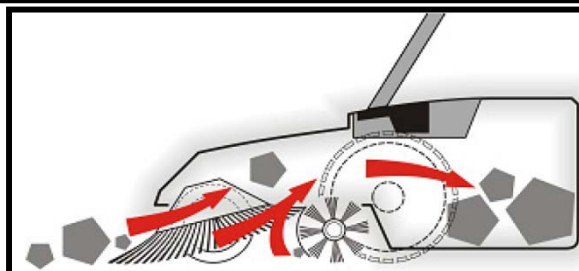
Highly Efficient, Battery Powered, Easy To Operate, 31" Wide, Triple Brush System Sweeper

The two front brushes rotate in opposite directions grabbing the debris directly in front of the sweeper while the brush roller on the bottom picks up all the fine particles, all the debris is then deposited into the large easy to empty 13.2 gallon container.

- 31" wide
- 13.2 gallon debris container
- Sweeps fine & coarse dirt
- Sweeps wet & dry leaves
- Side rollers that make sweeping along walls an ease
- Maintenance free motor & battery
- Light weight for easy use
- Stand up storage design for easy storage
- Comes with lubricant spray
- 4 year warranty on brushes
- 2 year overall warranty

Specifications

Model: BG677
Width: 31 inches
Weight: 44 lbs.
Container Capacity: 13.2 Gallons
Roller Brush: Fiberglass
Height Adjustment: Yes
Side Rollers: Yes



Bissell®

BigGreen Commercial™

**Battery
Powered**

BG697

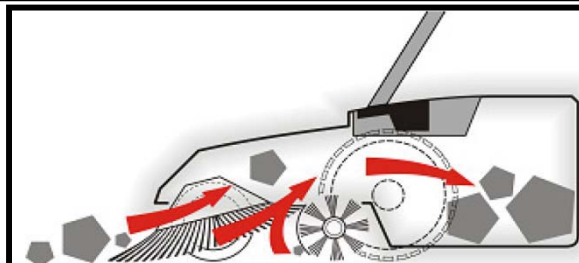
Highly Efficient, Battery Powered, Easy To Operate, 38" Wide, Triple Brush System Sweeper

The two front brushes rotate in opposite directions grabbing the debris directly in front of the sweeper while the brush roller on the bottom picks up all the fine particles, all the debris is then deposited into the large easy to empty 13.2 gallon container.

- 38" wide
- 13.2 gallon debris container
- Sweeps fine & course dirt
- Sweeps wet & dry leaves
- Side rollers that make sweeping along walls an ease
- Maintenance free motor & battery
- Light weight for easy use
- Stand up storage design for easy storage
- Comes with lubricant spray
- 4 year warranty on brushes
- 2 year overall warranty

Specifications

Model: BG697
Width: 31 inches
Weight: 44 lbs.
Container Capacity: 13.2 Gallons
Roller Brush: Fiberglass
Height Adjustment: Yes
Side Rollers: Yes



Bissell®

BigGreen Commercial™

Extractor BG10®

Commercial Deep Cleaning...Done Right, Done Fast, and for a Great Price

A Big Fix for a Big Mess

- 2 motors and DirtLifter® power brush
- 2 large capacity tanks
- Adjustable handle
- Easy-Clean brush roller

Fewer Stops – Maximum Efficiency

- 25 foot Extension Cord – 50 foot Cleaning Reach

Easy Portability!

- Cleans forward and back
- Powerful edge-to-edge suction

UPC # 011120059021

**BG10® Works Hard
You Work Smart...
and Finish Strong.**

**1 Year
Warranty**



**Optional Accessory Pack 30G3
Hose & Upholstery Tool**



Weights 42 lbs

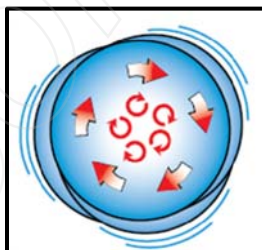
Bissel®

BigGreen Commercial™

19" Orbiting Pattern Floor Machine with Optional Screen Sanding Kit.



*Easy to operate
No Torque
No Gouging
No Swirling*



- Powerful induction motor is totally enclosed. No brushes or commutator to wear out – ever!
- Orbiting transmission runs at over 1725 orbits per minute. The random orbital drive means no torque gouging, swirling or vibrations.
- A 19" apron with optional vacuum connections controls and collects sanding dust to create a lightweight, high productivity screen sanding machine.
- Vacuum "T" mounting on handle lets you collect sanding dust with a backpack or canister vacuum.
- Safety enhanced non-conductive dual triggers eliminates shock potential. Safety interlock switch prevents unexpected startups.
- 50 foot long power cord.
- Free-floating, 14 gauge chromed steel handle has an easy kick release and automatic locking system.
- 5 inch, non-marring transport wheels.
- 5 year motor warranty. 1 year overall.

Specification

Pad Drive Size:	16"
Cleaning Path:	19" orbital path
Motor:	115V, 10.8 amps, 60 Hz.
Power Cord:	50 foot, 14/3 gauge safety cord
Switch:	Dual-powered trigger
Handle:	14 gauge chrome steel, free floating
Weight:	74 lbs. with sanding kit

BGLB9000

Accessories

Item #	Description
12TV027	Vacuum Kit
53269-010327	17" Pad Holder
53304-01	17" Pad Holder Green Bristle
82001	17" White Scrub Brush
82002	17" Dry Shampoo Brush
82003	17" Nylo Grit Brush, Green-Gray
82004	17" Black Polish Pad
82005	17" White Polish Pad
82006	17" Brown Polish Pad
82007	17" Red Polish Pad
82009	17" Lambs Wool Bonnet
82011	17" Beige Stone Care Pad
82010	17" Union Mix Scrub Brush
LB17012	17" - 12 Grit Loop Back
LB17036	17" - 36 Grit Loop Back
LB17040	17" - 40 Grit Loop Back
LB17060	17" - 60 Grit Loop Back
SS17060	17" - 60 Grit Sand Screen
SS17080	17" - 80 Grit Sand Screen
SS17100	17" - 100 Grit Sand Screen
SS17120	17" - 120 Grit Sand Screen
SS17150	17" - 150 Grit Sand Screen

Bissell®

BigGreen Commercial™

Floor Machine

FMU Burnisher



- 1.5 HP, DC rectified motor eliminates brown-outs, low voltage and startup torque problems.
- An adjustable handle makes operating easy and comfortable.
- The low profile drive apron makes reaching under counter coves and beds hassle free.
- Safety enhanced non-conductive dual triggers eliminates shock potential.
- Non-marring full wrap bumpers protects walls and baseboards.

Specifications

Item # :	BGDC-19	BGDC-21	BGDC19-2000	BGDC-21-2000
Size:	19"	21"	19"	21"
Speed:	1500 RPM	1500 RPM	2000 RPM	2000 RPM
Weight:	84 lbs.	86 lbs.	87 lbs.	89 lbs.
Motor:	1.5 HP DC rectified			
Amp draw:	13 – 15 amps			
Chassis:	Polished aluminum			
Power Cord:	50 foot safety 14/3 gauge			
Wheels:	6" non-marking operating, 4" transport			
Warranty:	5 year motor			

PRO FMC series Heavy-Duty Floor Machines with Interchangeable Aprons 13", 15", 17", 19" and 21".



- Available in one or two speed.
- Triple-planetary high torque transmission, handles the most demanding applications.
- Safety enhanced interlock switch, both hands are conveniently in control.
- Safety enhanced non-conductive dual triggers, eliminates shock potential
- All metal chassis adds weight for faster results.
- Fully adjustable handle position makes operating easy and comfortable.

Specifications

Item # :	BGC-1	BGC-2
Brush Speed:	175 RPM	175 / 300 RPM
Motor:	1.5 HP AC 2 capacitor	1.5 HP DC rectified
Amp Draw:	13 – 15 amps	13 – 15 amps
Chassis:	Polished aluminum	Polished aluminum
Power Cord:	50 foot safety 14/3 gauge	50 foot safety 14/3 gauge
Weight:	98 – 107 lbs. (depends on apron selection)	
Brush Drive:	"B" style clutch	"B" style clutch
Wheels:	6" non-marking	6" non-marking
Warranty:	5 year motor and gearbox	5 year motor and gearbox
Aprons	13"	15"
Item # :	BGBA-13	BGBA-15
		BGBA-17
		BGBA-19
		BGBA-21

Bissell®

BigGreen Commercial™

Floor Machine



PRO FMT Dual-Speed

- Dual speed 175 / 300 RPM, 1.5 HP motor.
- Triple-planetary high torque transmission, handles the most demanding applications.
- Safety enhanced interlock switch, both hands are conveniently in control.
- Safety enhanced non-conductive dual triggers, eliminates shock potential
- All metal chassis adds weight for faster results.
- Fully adjustable handle position makes operating easy and comfortable.

**Two machines
in one, for
spray buffing,
bonnet cleaning,
scrubbing
and shampooing**

Specifications

Item # :	BGTS-17	BGTS-19	BGTS-21
Size:	17"	19"	21"
Speed:	175 or 300 RPM – Motor mount switch		
Weight:	92 lbs.	93 lbs.	94 lbs.
Motor:	1.5 HP DC rectified		
Amp draw:	13 – 15 amps		
Chassis:	Polished aluminum		
Power Cord:	50 foot safety 14/3 gauge		
Brush Drive:	"B" style clutch		
Wheels:	6" non-marking		
Warranty:	5 year motor and gearbox		

PRO FMH Heavy-Duty Floor Machine



**Hospital quiet,
for spray buffing,
scrubbing, stripping,
shampooing, and
bonnet cleaning**

- Brush speed 175 RPM, 1.5 HP motor.
- Triple-planetary high torque transmission, handles the most demanding applications.
- Safety enhanced interlock switch, both hands are conveniently in control.
- Safety enhanced non-conductive dual triggers, eliminates shock potential
- All metal chassis adds weight for faster results.
- Fully adjustable handle position makes operating easy and comfortable.
- Non-marking full wrap bumpers, fully protects floors, walls and baseboards

Specifications

Item # :	BGH15E	BGH-17E	BGH-19E	BGH-21E
Size:	15"	17"	19"	21"
Speed:	175 RPM	175 RPM	175 RPM	175 RPM
Weight:	104 lbs.	106 lbs.	107 lbs.	108 lbs.
Motor:	1.5 HP	1.5 HP	1.5 HP	1.5 HP
Amp draw:	13 – 15 amps			
Chassis:	Polished aluminum			
Power Cord:	50 foot safety 14/3 gauge			
Drive:	"B" style clutch			
Wheels:	6" non-marking			
Warranty:	5 year motor and gearbox			

Bissell®

BigGreen Commercial™

Cord-Free Electric Sweeper

Powerful One Motor Floor Sweeper

Rechargeable System with Revolving Agitator Brush and Geared Belt Drive for Superior Quick Pickup Cleaning on all Surfaces.

A Clean Sweep. For those times when a vacuum is too inconvenient and a broom is too time consuming, reach for the Bissell BigGreen Commercial Cordless Electric Sweeper! The Cordless Electric Sweeper is surprisingly lightweight and powerful for its size. It employs a Nickel-Metal-Hydrate battery with a running time 90 minutes. The battery-powered roller brush sweeps dirt and bulkier items into its dustpan, which is easily removed for emptying. The Cordless Electric Sweeper comes with a wall mount for out of sight storage and includes a compact power adapter for charging. Whether sweeping up crumbs from under a table, tidying up after children or quickly cleaning before and during a party, the Cordless Electric Sweeper will help you spend less time cleaning and more time doing the things you enjoy!

- Battery long life energy saving Nickel-Metal-Hydrate (running time 90 minutes)
- Extra long life, energy saving, geared motor
- Titanium bushings for brush roller (will not wear out like brass bushing)
- Laser balanced brush roller & wheels for smooth & even operation
- Non slip geared belt
- Telescoping handle that makes operating comfortable
- Virtually indestructible hi impact housing & hood
- See thru front housing to view any possible blockage
- Dust bin designed to seal dust from leaking into motor housing
- Dust bin capacity 17 ounces
- Weighs only 3.9 pounds
- One year limited warranty
- UPC: 811827020030



- Item Number BG9100NM - Nickel-Metal-Hydrate Battery

Bissell®

BigGreen Commercial™

Manual Sweepers

**Great for
Foodservice!**

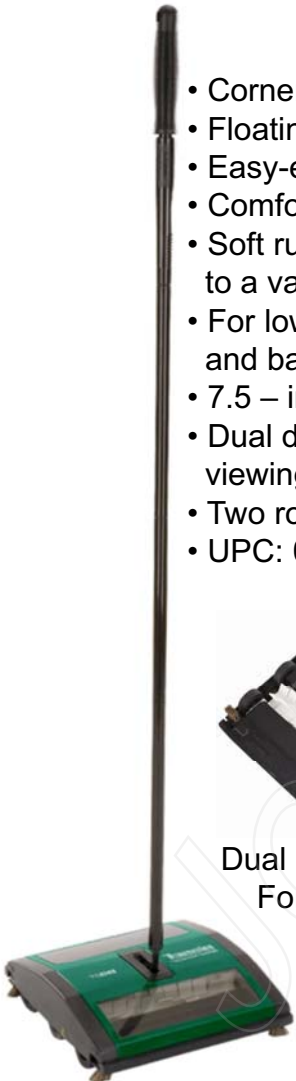
**Our Commercial Line Shows...
No One Knows Sweepers Better than BISSELL**

BG21®

- Corner Brushes
- Floating head
- Easy-empty dirt bin
- Comfortable grip
- Soft rubber wheels conform to a variety of floor surfaces
- For low pile carpet and bare floors
- 7.5 – inch cleaning path
- Dual debris canisters with viewing window
- Two rows of rubber rotors
- UPC: 011120053166



Dual Rubber Brushes
For Wet Messes

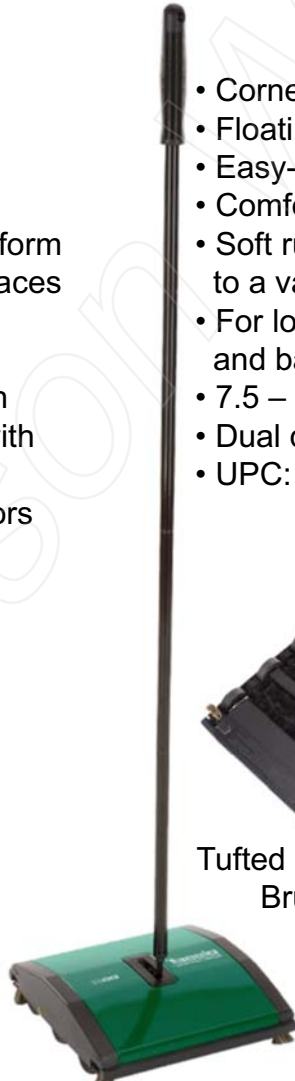


BG23®

- Corner Brushes
- Floating head
- Easy-empty dirt bin
- Comfortable grip
- Soft rubber wheels conform to a variety of floor surfaces
- For low pile carpet and bare floors
- 7.5 – inch cleaning path
- Dual debris canisters
- UPC: 011120053197



Tufted & Twisted
Brushes



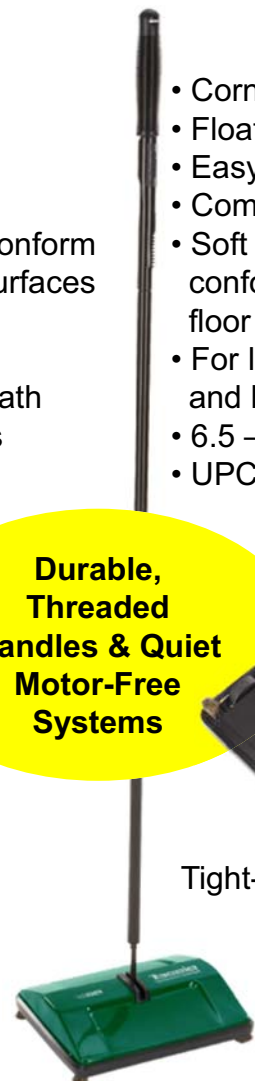
BG25®

- Corner Brushes
- Floating head
- Easy-empty dirt bin
- Comfortable grip
- Soft rubber wheels conform to a variety of floor surfaces
- For low pile carpet and bare floors
- 6.5 – inch cleaning path
- UPC: 011120053210



Tight-Spot Cleaning

**Durable,
Threaded
Handles & Quiet
Motor-Free
Systems**





Professional-Strength Cleaning Formulas

2X ADVANCED FORMULA

49G5-1 (52 oz)

49G5 (32 oz)



Triple-action Cleaning

BigGreen COMPLETE® FORMULA

31B6



Cleaner and Defoamer

2X OXY FORMULA

85T6-1 (52 oz)

85T6 (32 oz)



Oxygen-boosted Cleaning

Features:

- Deep cleans and protects while removing tough odors
- Scotchgard™ protection
- Keeps carpets looking good for a longer time
- Odor neutralizer
- Carpet refresher
- Soil and stain protector
- Powers out ground-in dirt and stains
- Color-safe for carpet and upholstery

Product Specifications:

2X Advanced Formula
Model #: 49G5-1
Volume: 52 fl oz (1.625 qt) 1.53 L
Model #: 49G5
Volume: 32 fl oz (1.0 qt) 946 mL

BigGreen COMPLETE Formula
Model #: 31B6
Volume: 128 fl oz (1 gal) 3.78 L

2X Oxy Formula
Model #: 85T6-1
Volume: 52 fl oz (1.625 qt) 1.53 L
Model #: 85T6
Volume: 32 fl oz (1.0 qt) 946 mL

*Scotchgard is a trademark of 3M



Odor & Stain REMOVER 45V1



Eliminates Stains
& Odors

Heavy Traffic® PRECLEANER 19X6



Makes Deep
Cleaning Easier

Oxy Deep® Pro SPOT & STAIN REMOVER 97W7



Permanently Removes
Tough, Set-in Stains

STOMP 'N GO® Stain Lifting Pads 77D1



For Fresh & Set-in Stains

Features:

- Enzyme-action formula captures and destroys odors
- Removes urine, vomit, and blood stains
- Cleans oily-based stains left by food or motor oil
- Removes smoke, mold, mildew, and kitchen odors
- Great for pet stains!
- Penetrates carpet to remove embedded dirt
- Perfect for deep cleaning
- Leaves carpet fresh
- Attacks coffee stains in high-traffic areas
- Earth-friendly formula—dye and phosphate free!
- Oxygen-activated stain remover easily eliminates deep-down stains
- Takes out red wine, juice, food, dirt, coffee stains, and more!
- Removes garlic, onion and fish odors
- Carpet-safe!
- One stomp, and your work is done
- No scrubbing
- Removes urine, wine, food stains, mud, and more
- Leaves clean, fresh scent
- Fast-acting!

Product Specifications:

Odor & Stain REMOVER

Model #: 45V1

Volume: 32 fl oz (1.0 qt) 946 mL

Heavy Traffic PRECLEANER

Model #: 19X6

Volume: 32 fl oz (1.0 qt) 946 mL

Oxy Deep Pro
SPOT & STAIN REMOVER

Model #: 97W7

Volume: 32 fl oz (1.0 qt) 946 mL

STOMP 'N GO Stain Lifting Pads

Model #: 77D1

Quantity: 20 CT